

RSM on the Tombigbee River

Sediment Management Alternatives in Chronic Dredging Reach



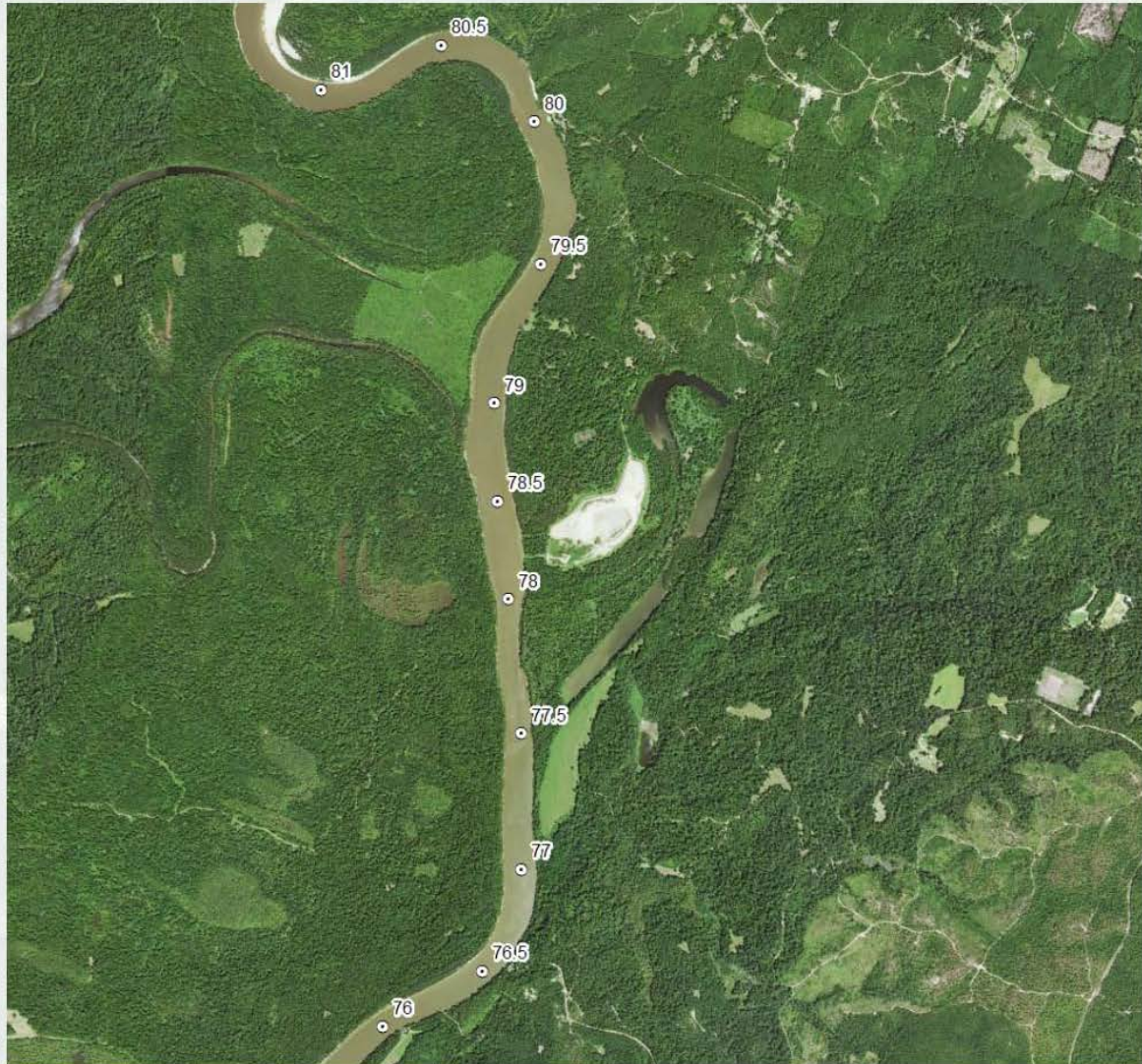
BUILDING STRONG®



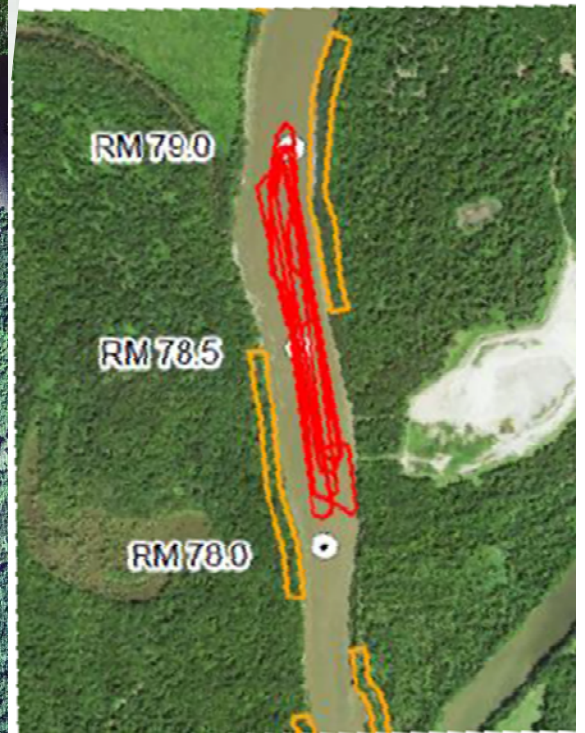
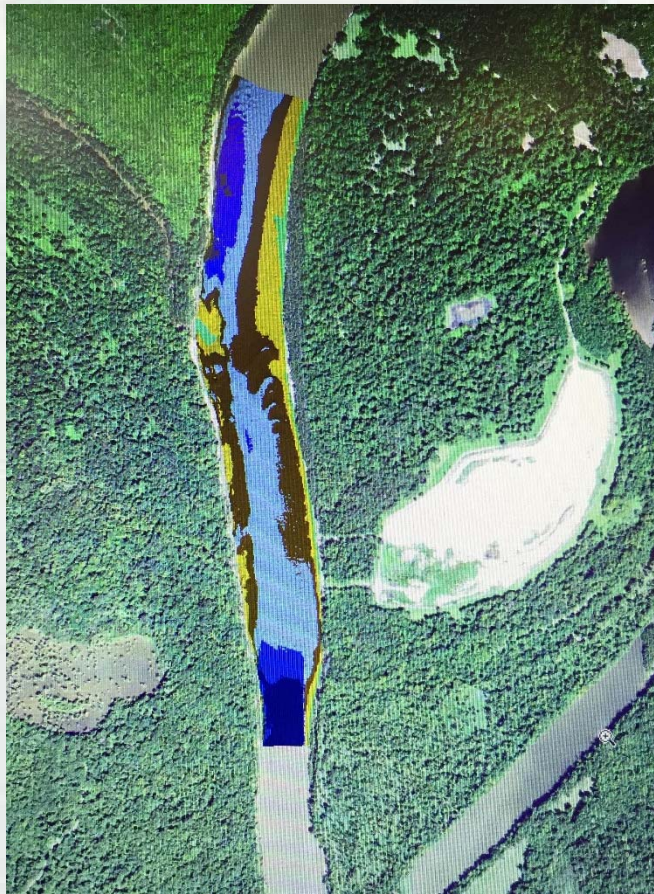
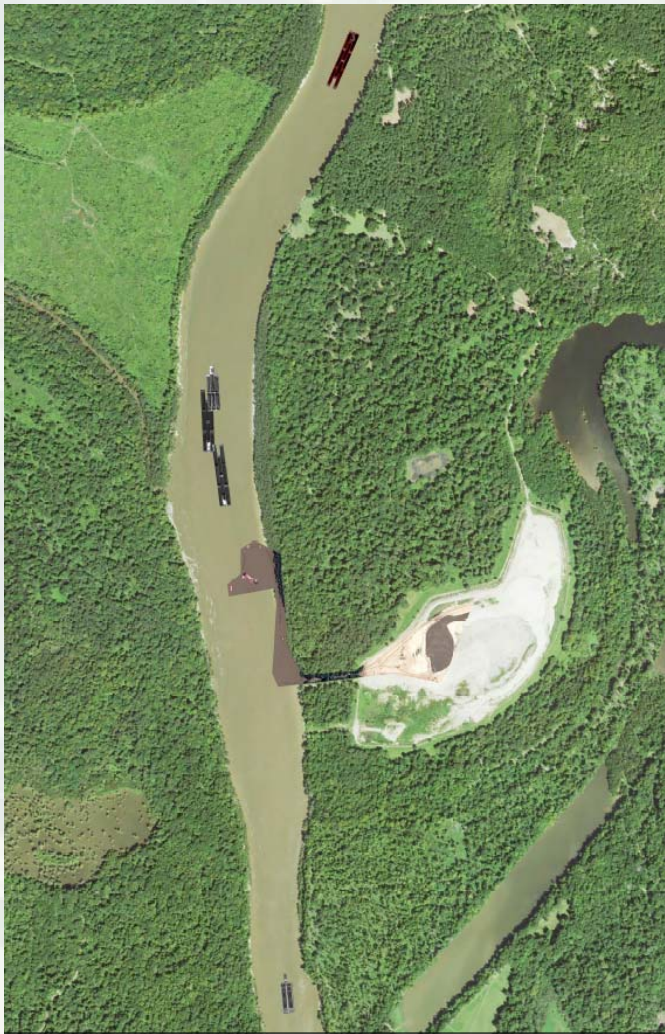
BUILDING STRONG®



BUILDING STRONG®



BUILDING STRONG®



83,000 cu yds/yr

\$330,000 per year

\$3.3 million every 10 years



BUILDING STRONG®

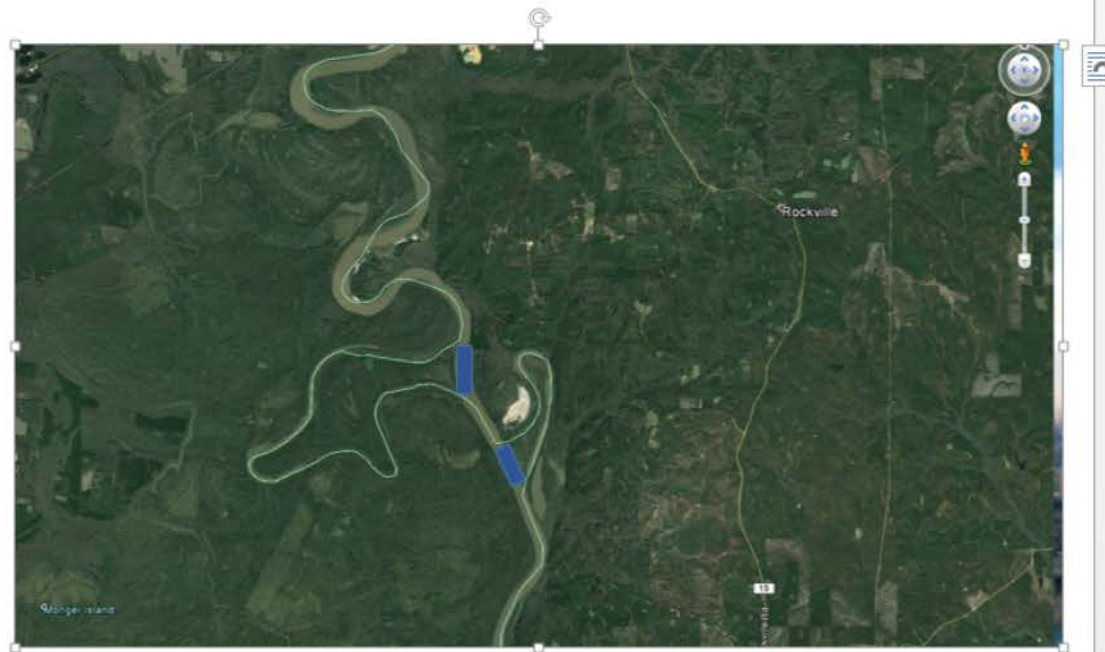


1997 Planform versus
2015 Planform



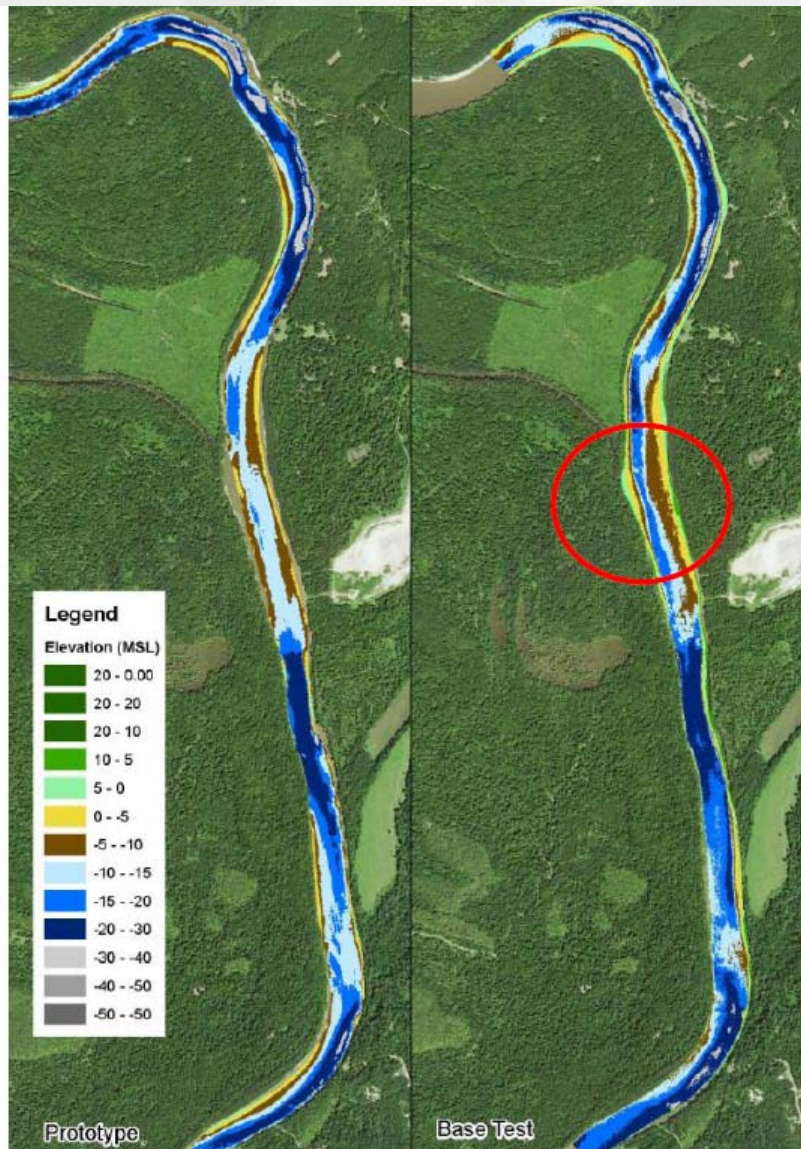
BUILDING STRONG®

Font and Paragraph toolbars with various text formatting options like bold, italic, underline, and styles.





BUILDING STRONG®



No PreMolding of the Bed

1 inch = 300 ft H

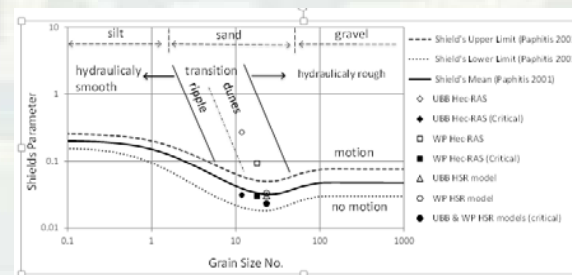
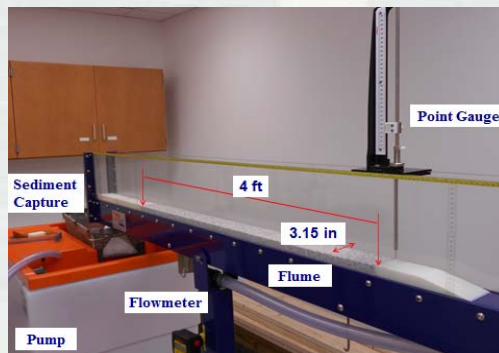
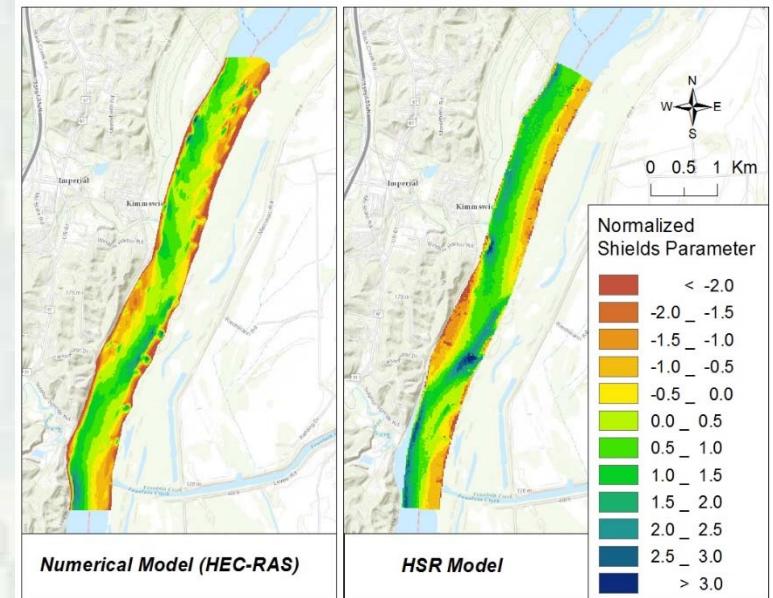
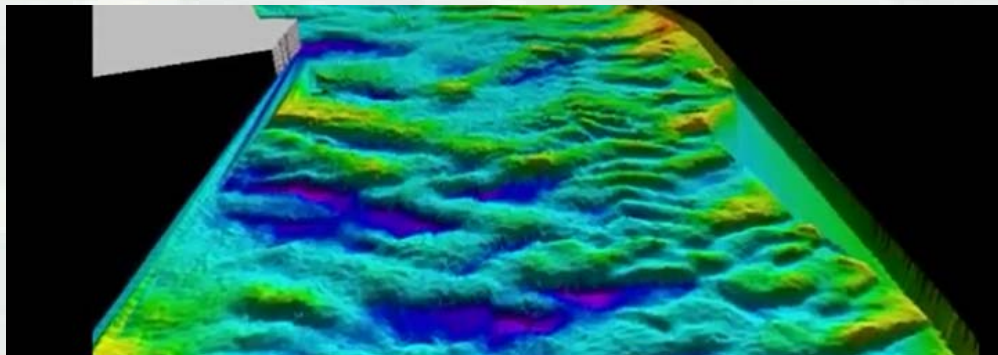
1 inch = 55 ft V

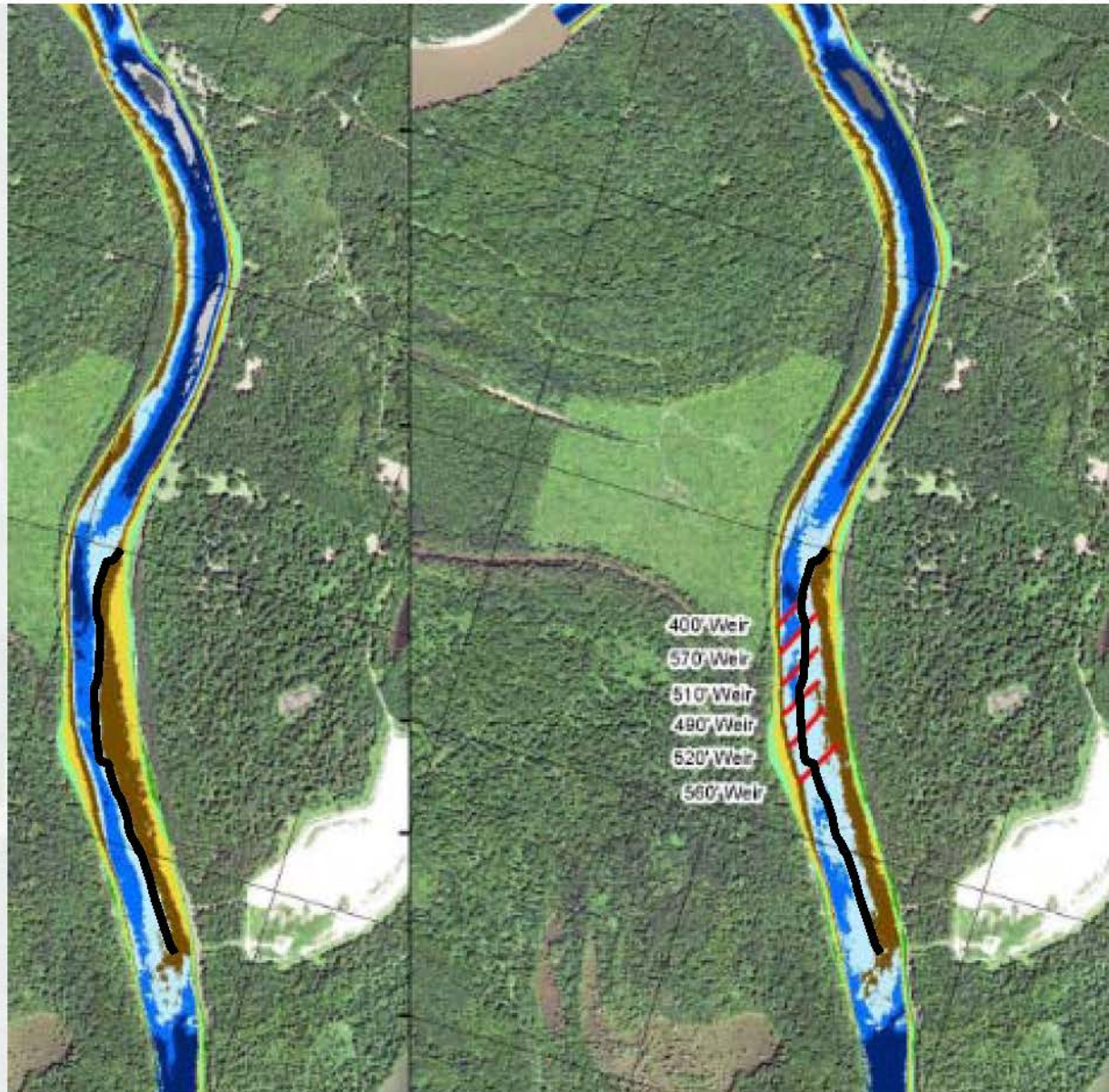
6 to 1 Distortion



BUILDING STRONG®

$$\tau_0 = \tau' + \tau''$$





BUILDING STRONG®

APPLIED 
RIVER
ENGINEERING CENTER

00:04



BUILDING STRONG®

W-Dikes



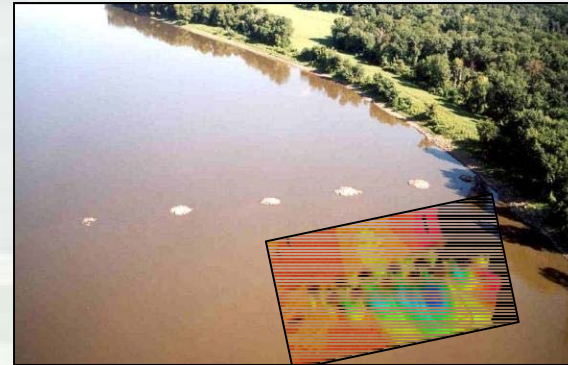
Chevrons



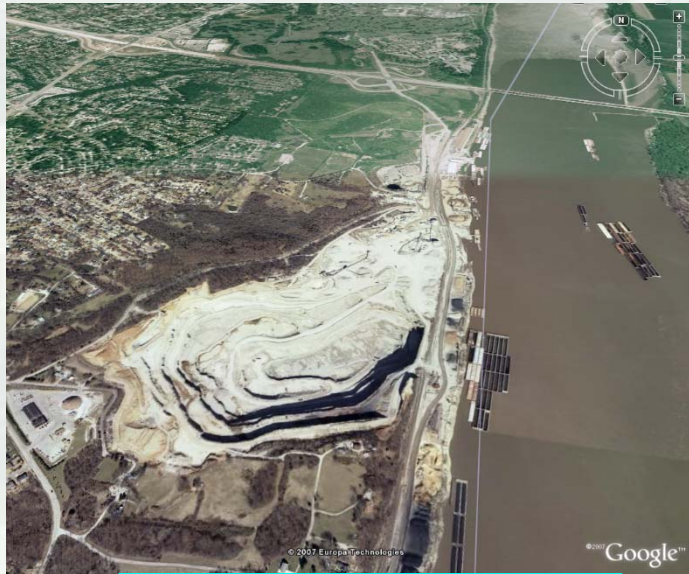
Bendway Weirs



Multiple Roundpoint Structures



BUILDING STRONG®



**Mississippi River St.
Louis \$12/ton
Mississippi River
New Orleans \$35/ton**

**Tombigbee River
Sunflower Bend
\$75/ton**



BUILDING STRONG®

Dredge Material and GeoBags, Mississippi River Deep Draft Channel



BUILDING STRONG®



BUILDING STRONG®



BUILDING STRONG®



BUILDING STRONG®



BUILDING STRONG®



12/2/1999



BUILDING STRONG®



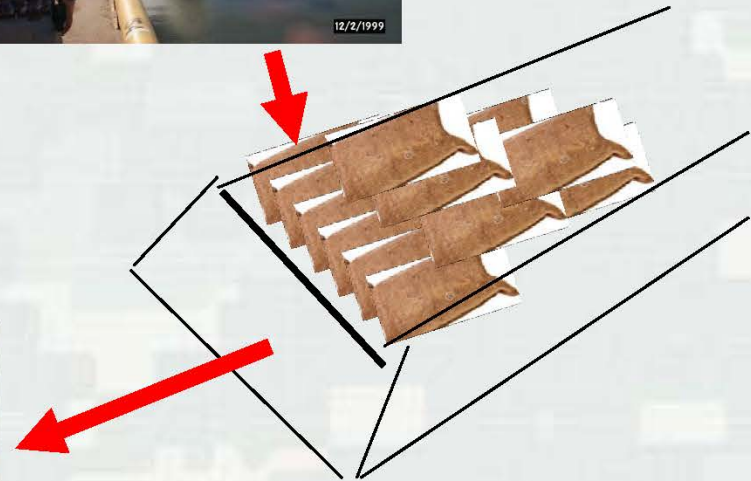
BUILDING STRONG®



BUILDING STRONG®



BUILDING STRONG®



BUILDING STRONG®