

204 CAP STUDY: OCEAN CITY MARYLAND – INLET AND COASTAL BAYS

Tony Clark, Tom Laczko, Danielle Szimanski
Baltimore District (NAB)
RSM IPR Successes and Challenges Meeting
17-19 May 2016

"The views, opinions and findings contained in this report are those of the authors(s) and should not be construed as an official Department of the Army position, policy or decision, unless so designated by other official documentation."

2016 RSM IPR Presentation



**US Army Corps
of Engineers.**



PROBLEM DESCRIPTION

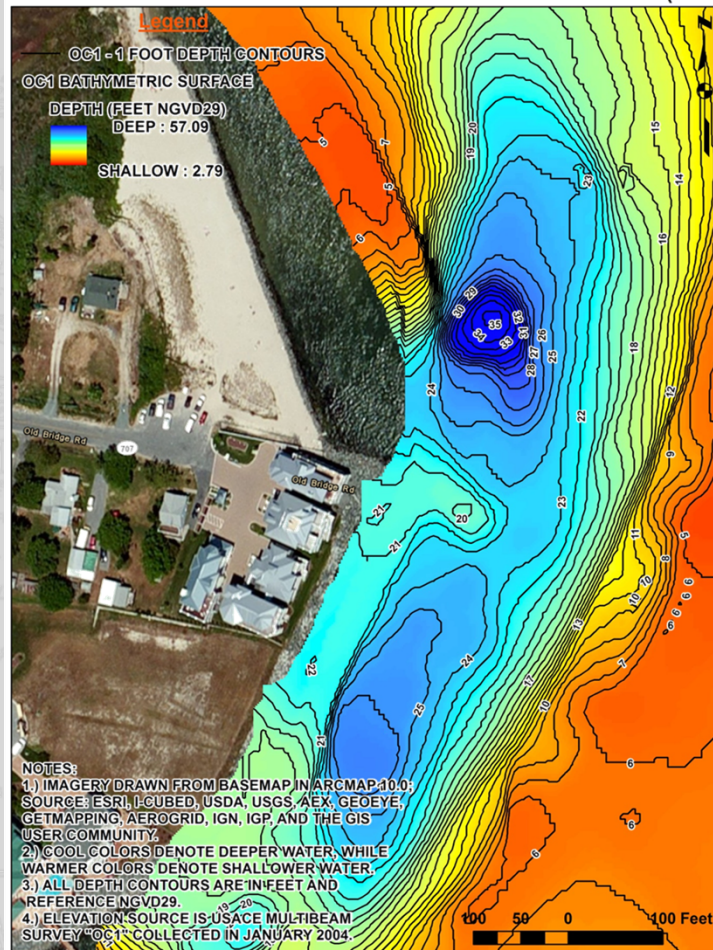
Multiple Issues within the system:

- Deepening scour hole in the vicinity of Stinky Beach
- Shoaling of the Ocean City, MD Harbor and Inlet channels has increased the need for dredging multiple times a year since Hurricane Sandy
- Beach erosion just south of the harbor channel in West Ocean City, MD
- Shoaling of marinas just south of the US 50 Bridge in Ocean City, MD
- Erosion from the north end of Assateague Island
- Potential that the jetties are not sand tight at the entrance to the Ocean City Inlet
- Shoaling of sediment just north of the inlet channel and south of the US 50 Bridge that has practically formed a sand bar at low tide.

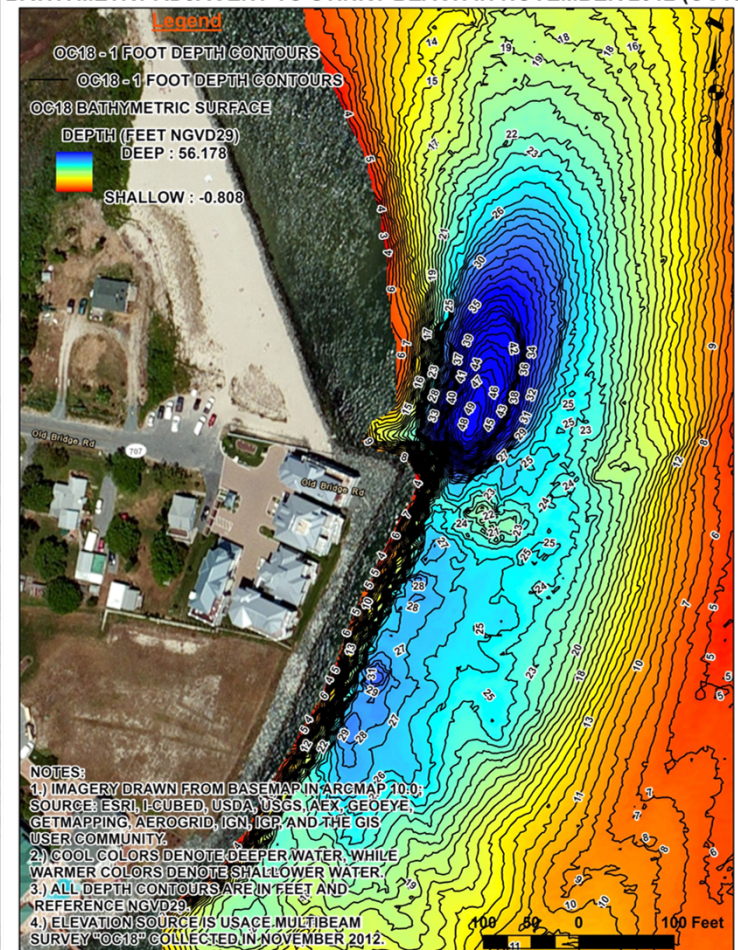


SCOUR HOLE AT STINKY BEACH OCEAN CITY, MD

BATHYMETRY ADJACENT TO STINKY BEACH IN JANUARY 2004 (OC1)



BATHYMETRY ADJACENT TO STINKY BEACH IN NOVEMBER 2012 (OC18)



US Army Corps
of Engineers.

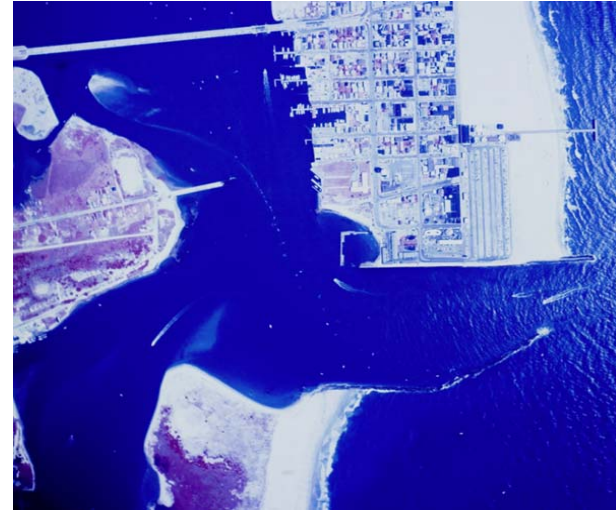


OCEAN CITY INLET OVER TIME

Aerial image of Ocean City Inlet, Circa April 1963 (USGS)



Aerial image of Ocean City Inlet, Circa August 1976 (USGS)



Aerial image of Ocean City Inlet, Circa April 1989 (USGS)



Aerial image of Ocean City Inlet, Circa July 2015 (Google Earth)





RECOMMENDATION/ISSUES AT HAND

Key focus: Determine where is the sand coming from.

Use hydrodynamic modeling and further investigative work to help formulate alternatives that could include but not limited to (1) dredging and placement, (2) building structures that divert or trap sediment, and (3) creating erosion protection for banks, shorelines, seabeds, and channel bottoms.

Devise an RSM plan to address all problems of the area.

Investigate specific issues with:

- Stinky Beach scour hole
- Bulkhead removal at West Ocean City harbor
- North end of Assateague Island erosion
- Sand tightening of Ocean City, MD jetties
- Shoaling at buoys 11&12