

Kauai Shoreline Change Studies

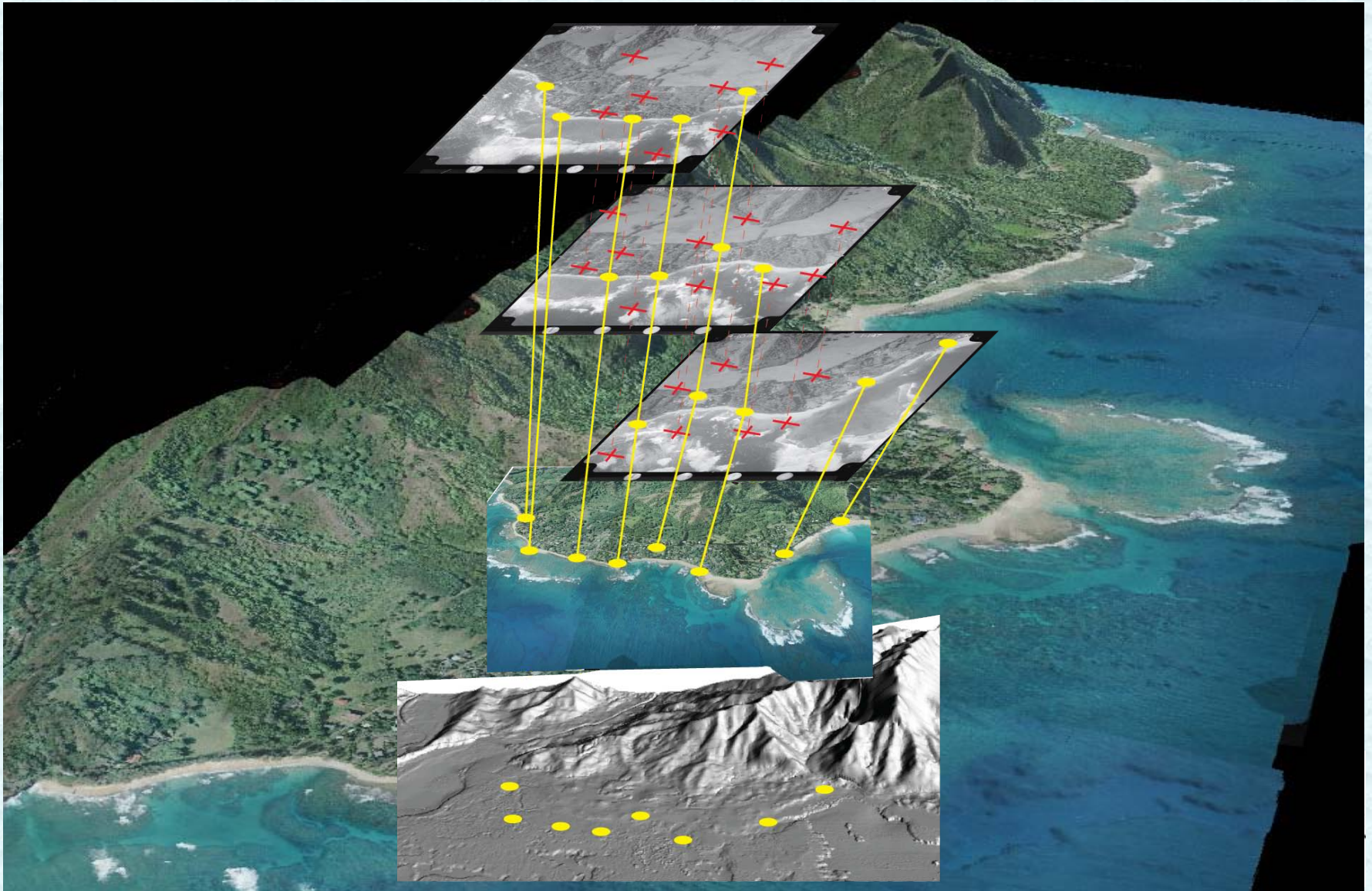
co-sponsored by:

State of Hawaii Department of Land and Natural Resources

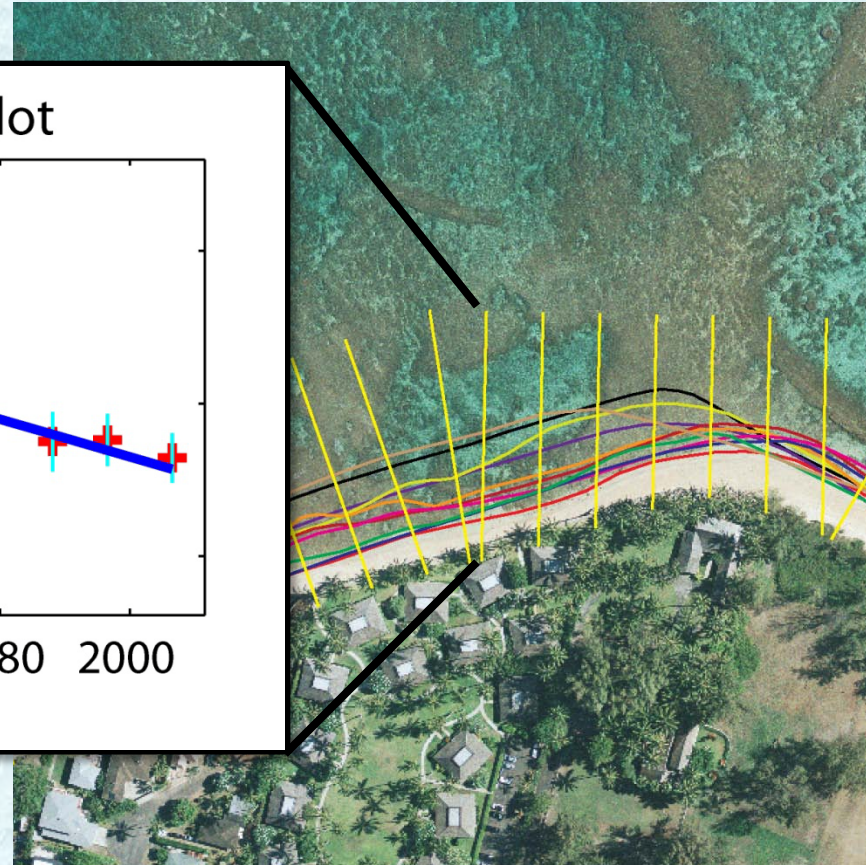
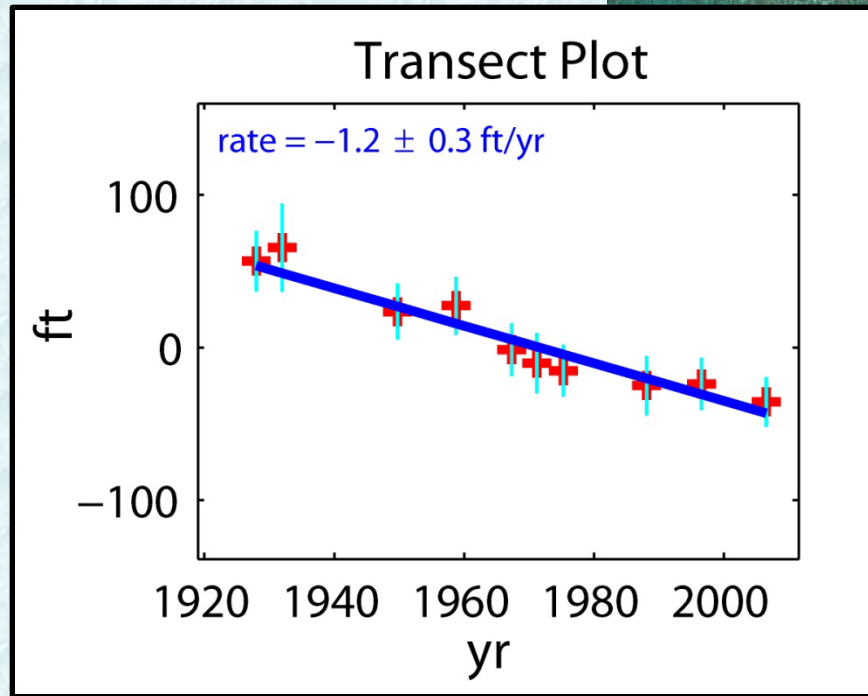
US Army Corps of Engineers, Honolulu District



Historical Aerial Photogrammetry



Mapping Historical Shorelines



portion of an aerial photo mosaic

co-sponsored by:

State of Hawaii Department of Land and Natural Resources

US Army Corps of Engineers, Honolulu District



Summary Stats - Kauai

- # transects: 3723 (~75 km)
beach loss: 6.0 km (8%)
- Long-term avg. rate: -0.11 ± 0.01 m/yr
71% erosional, 27% stable
- Short-term (1940's-) avg. rate: $+0.02 \pm 0.02$ m/yr
57% erosional, 40% stable

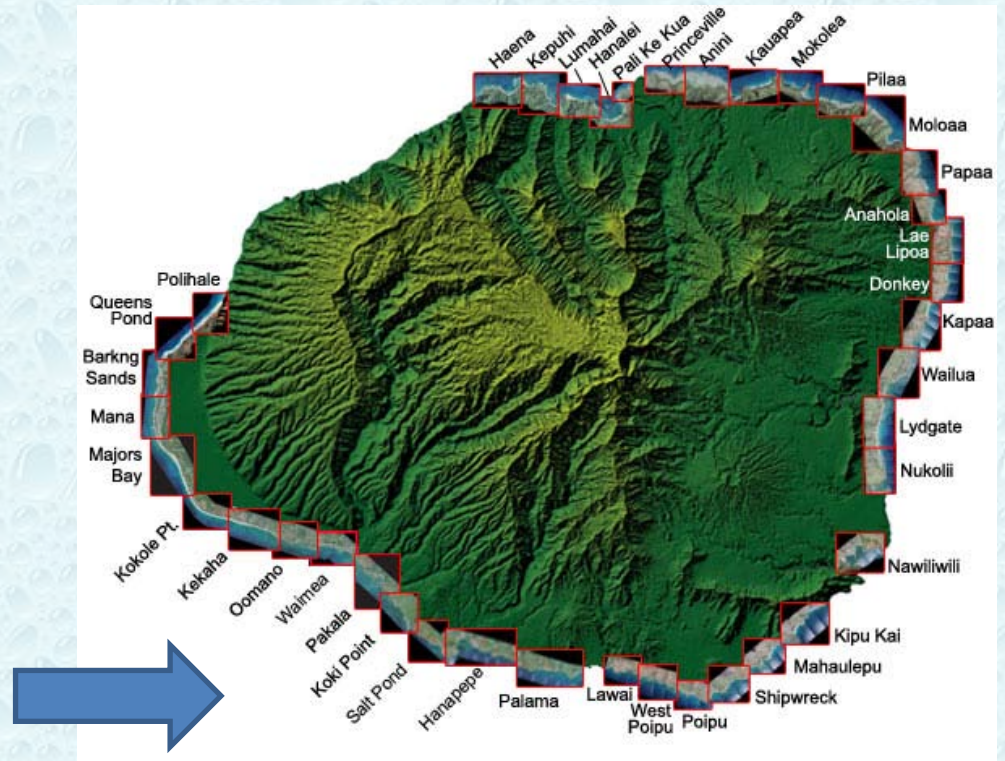
co-sponsored by:

State of Hawaii Department of Land and Natural Resources

US Army Corps of Engineers, Honolulu District



Shoreline change on the South Shore – Completed 2010



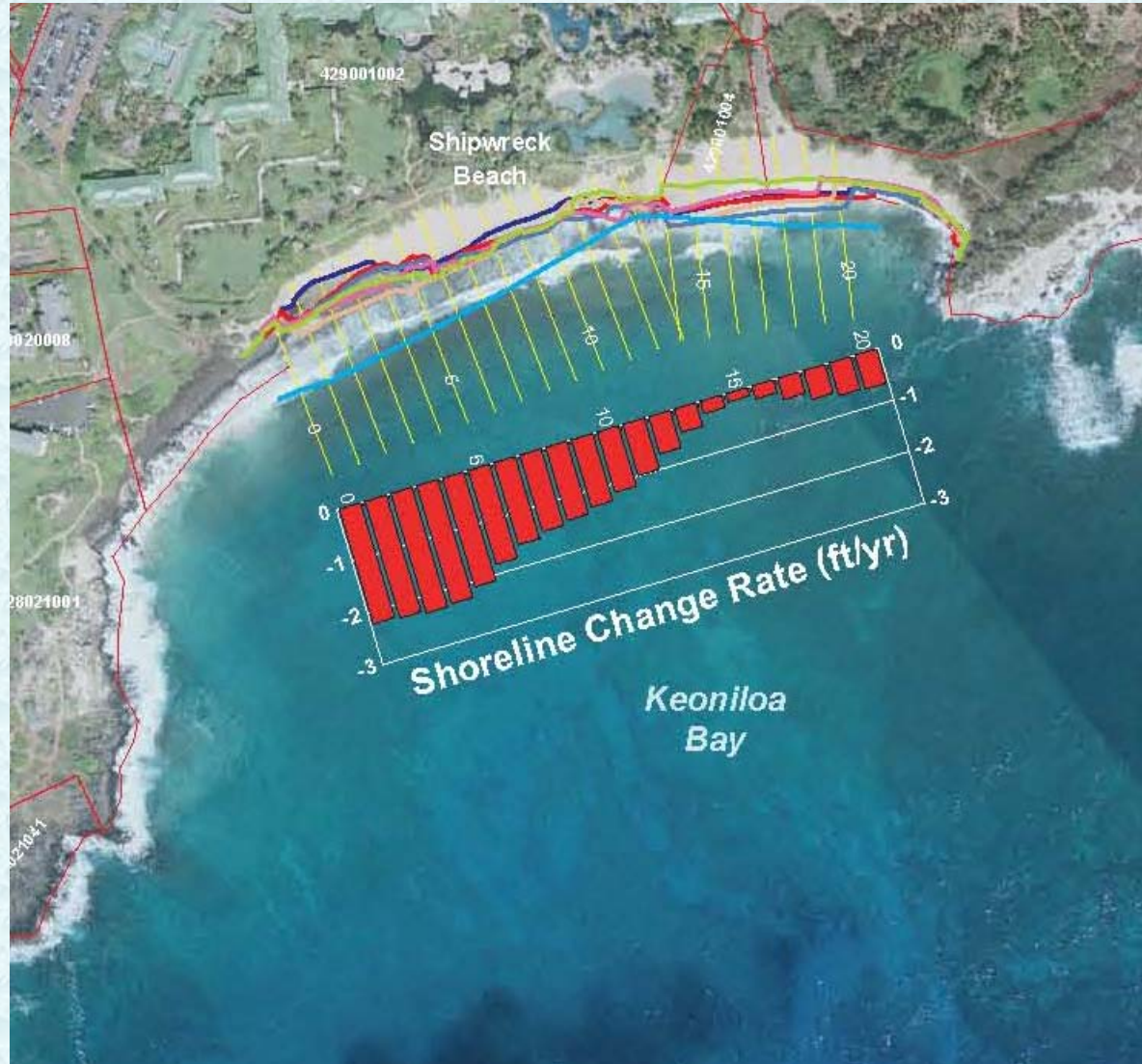
co-sponsored by:

State of Hawaii Department of Land and Natural Resources

US Army Corps of Engineers, Honolulu District



Shipwreck Beach



State of Hawaii Department of Land and Natural Resources

US Army Corps of Engineers, Honolulu District



Poipu



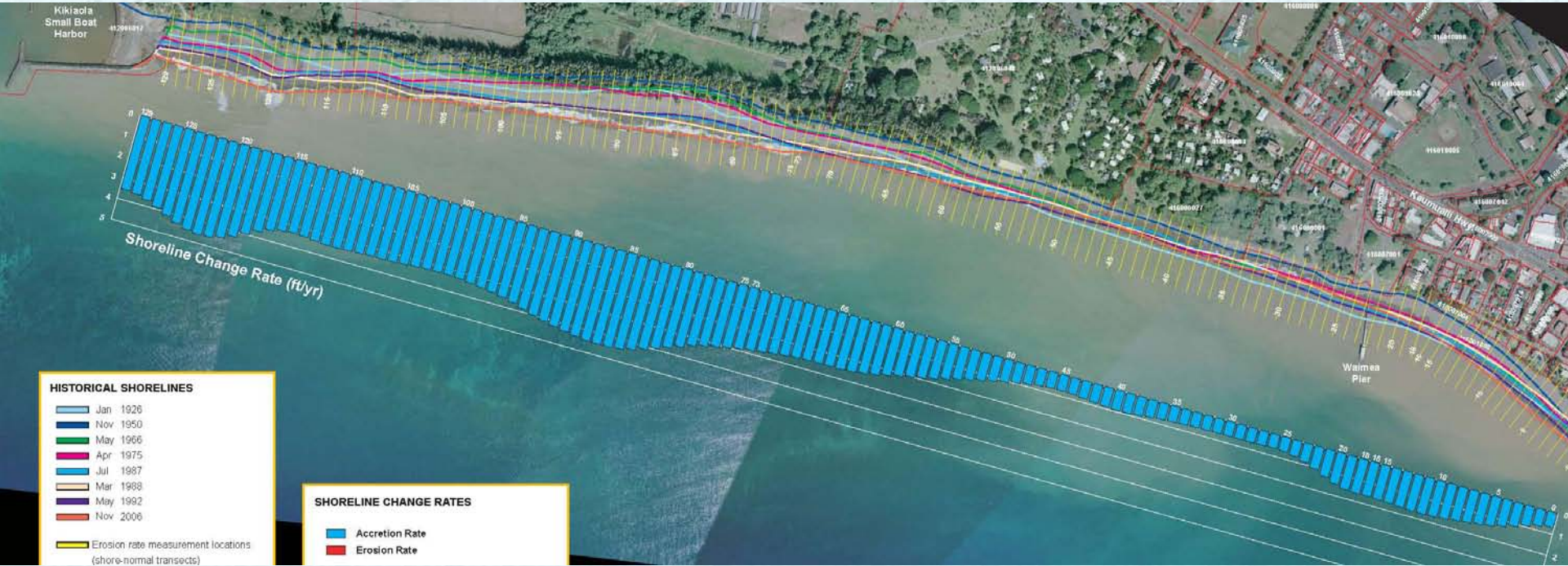
co-sponsored by:

State of Hawaii Department of Land and Natural Resources

US Army Corps of Engineers, Honolulu District



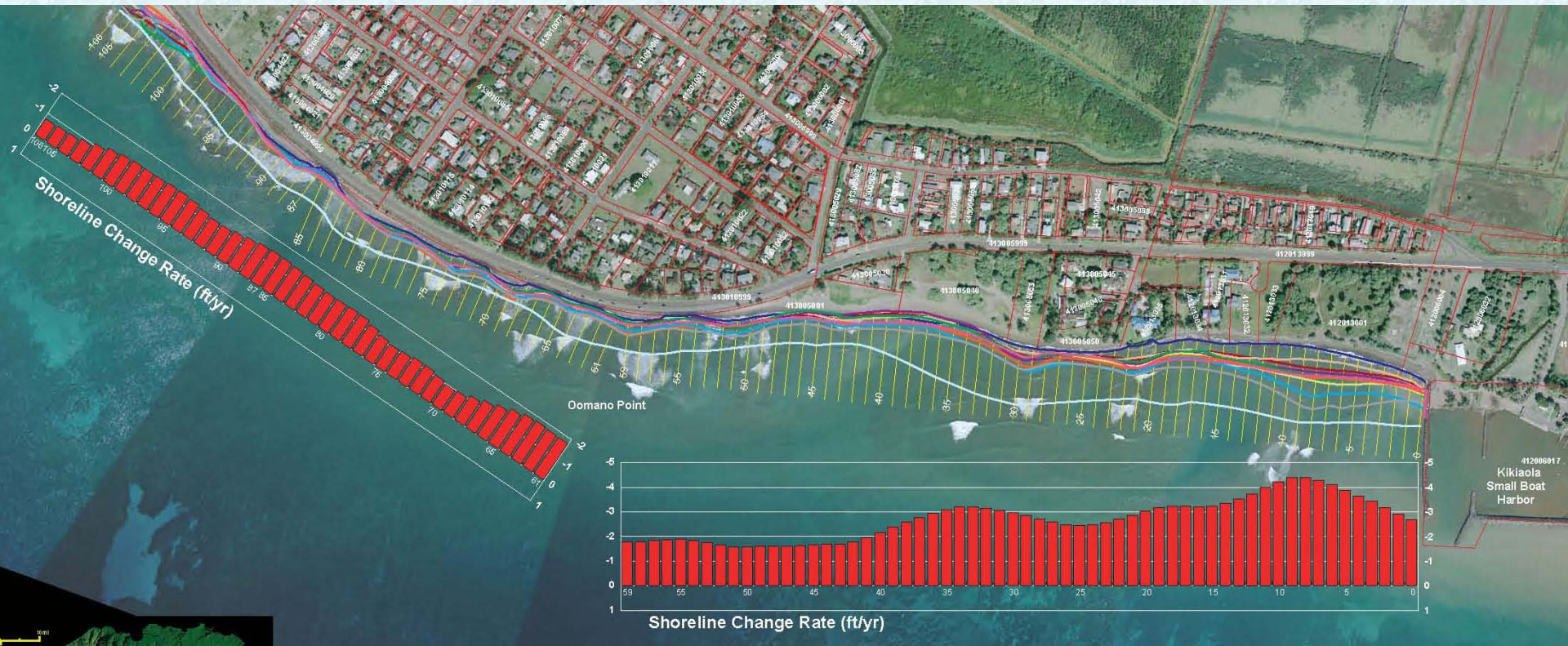
Waimea



co-sponsored by:
 State of Hawaii Department of Land and Natural Resources
 US Army Corps of Engineers, Honolulu District



Oomano Pt.



co-sponsored by:
State of Hawaii Department of Land and Natural Resources
US Army Corps of Engineers, Honolulu District



Kekaha

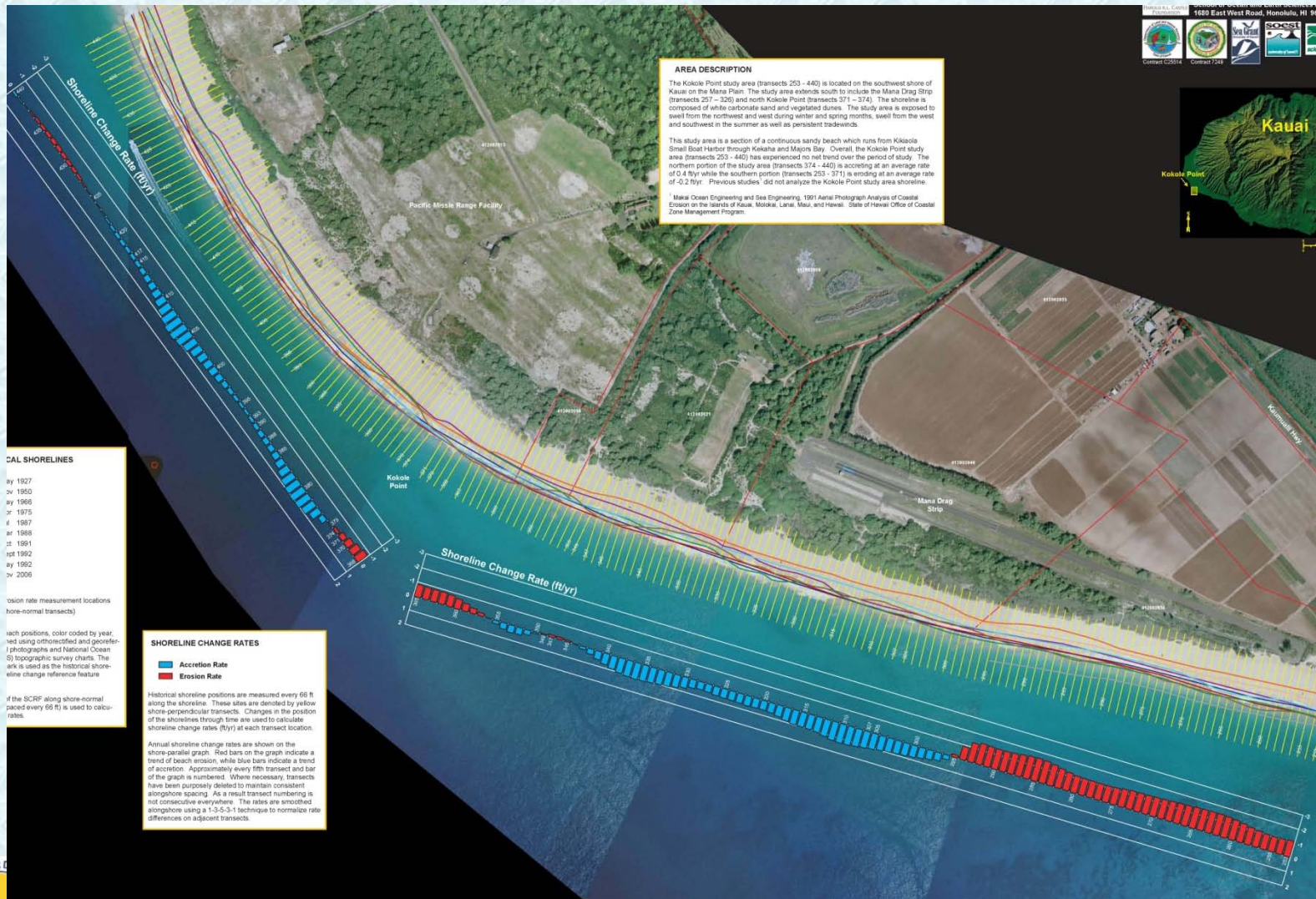


co-sponsored by:

State of Hawaii Department of Land and Natural Resources
 US Army Corps of Engineers, Honolulu District



Kokole Pt.



State of Hawaii Department of Land and Natural Resources
 US Army Corps of Engineers, Honolulu District



Thank You

co-sponsored by:

State of Hawaii Department of Land and Natural Resources

US Army Corps of Engineers, Honolulu District

