

Kauai Reef-top Sand Field Studies

co-sponsored by:

State of Hawaii Department of Land and Natural Resources

US Army Corps of Engineers, Honolulu District



Example from Waikiki



2005 Imagery

Issues: Water quality
Photo quality/rectification

co-sponsored by:

State of Hawaii Department of Land and Natural Resources

US Army Corps of Engineers, Honolulu District



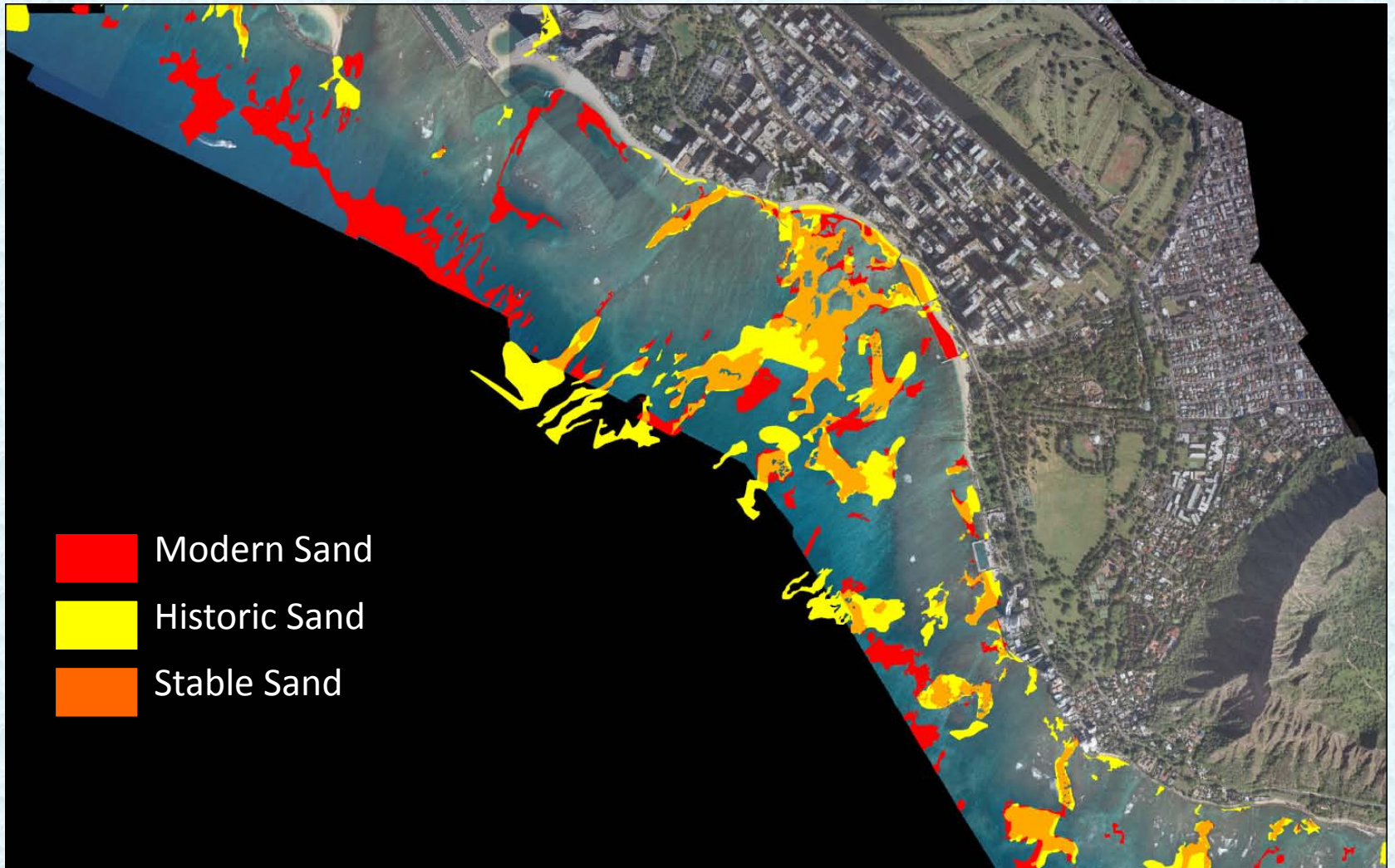


co-sponsored by:

State of Hawaii Department of Land and Natural Resources

US Army Corps of Engineers, Honolulu District



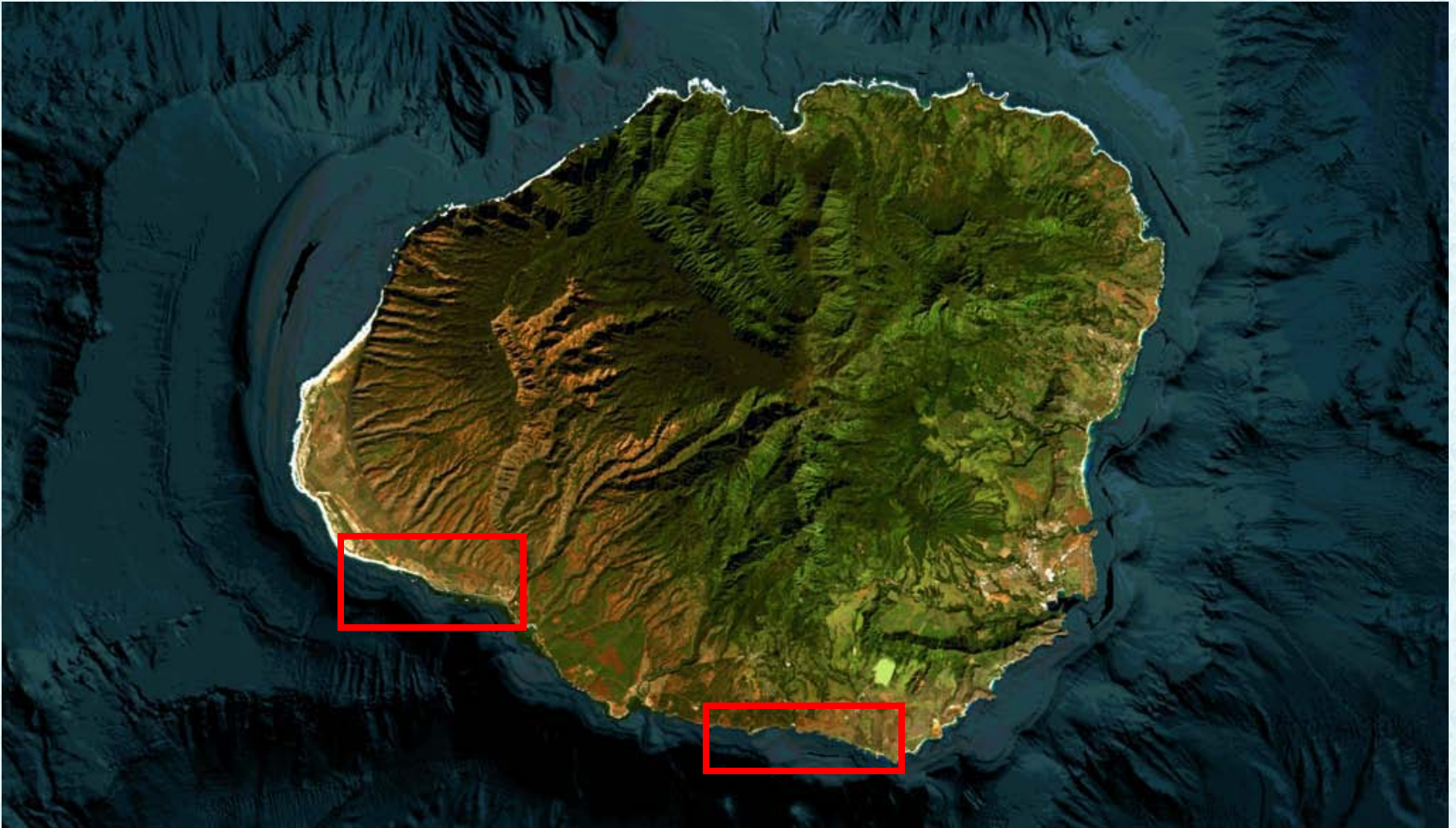


co-sponsored by:

State of Hawaii Department of Land and Natural Resources

US Army Corps of Engineers, Honolulu District

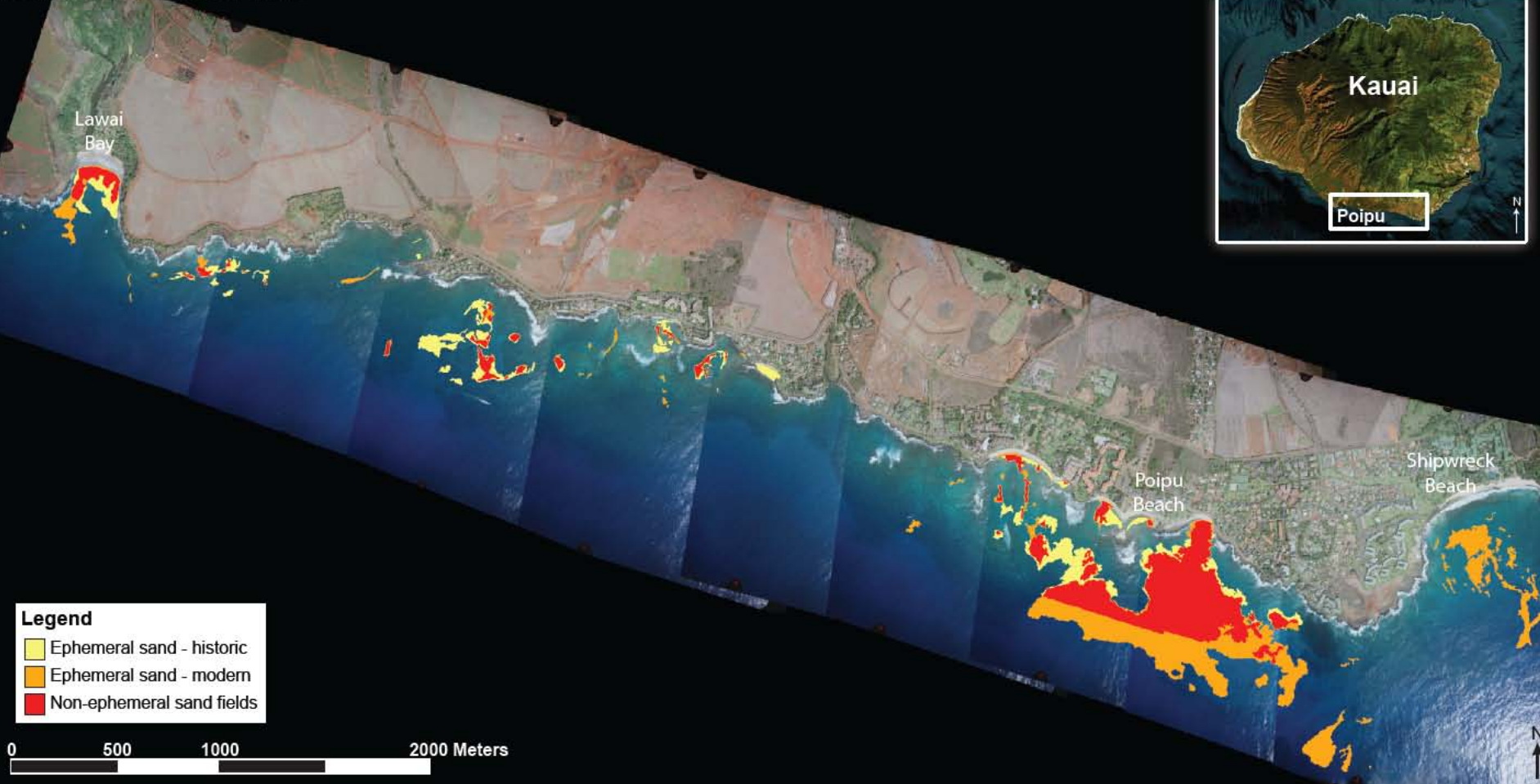




co-sponsored by:
State of Hawaii Department of Land and Natural Resources
US Army Corps of Engineers, Honolulu District



Poipu Reef-top Sand Fields



Legend

- Ephemeral sand - historic
- Ephemeral sand - modern
- Non-ephemeral sand fields

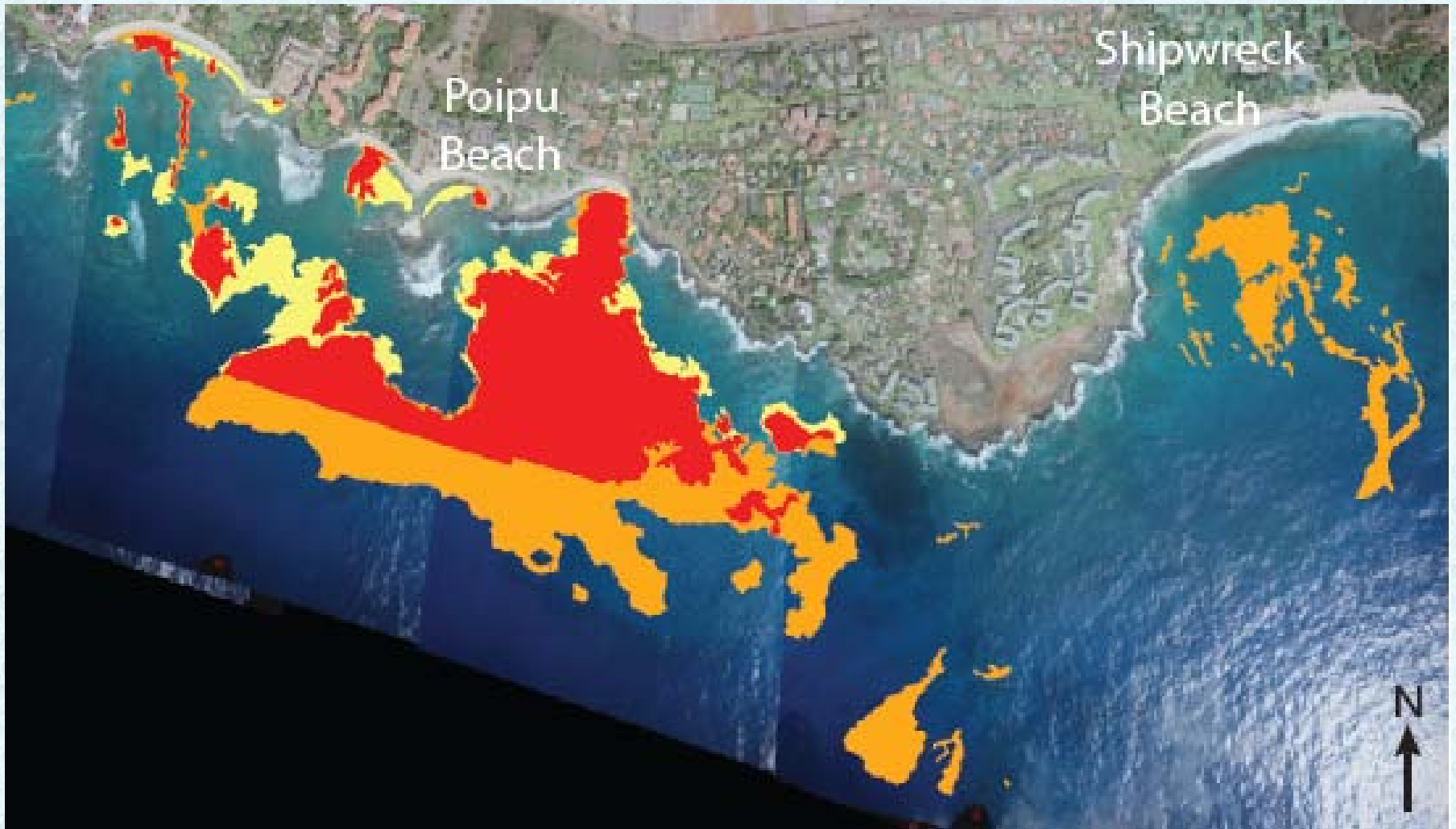
0 500 1000 2000 Meters

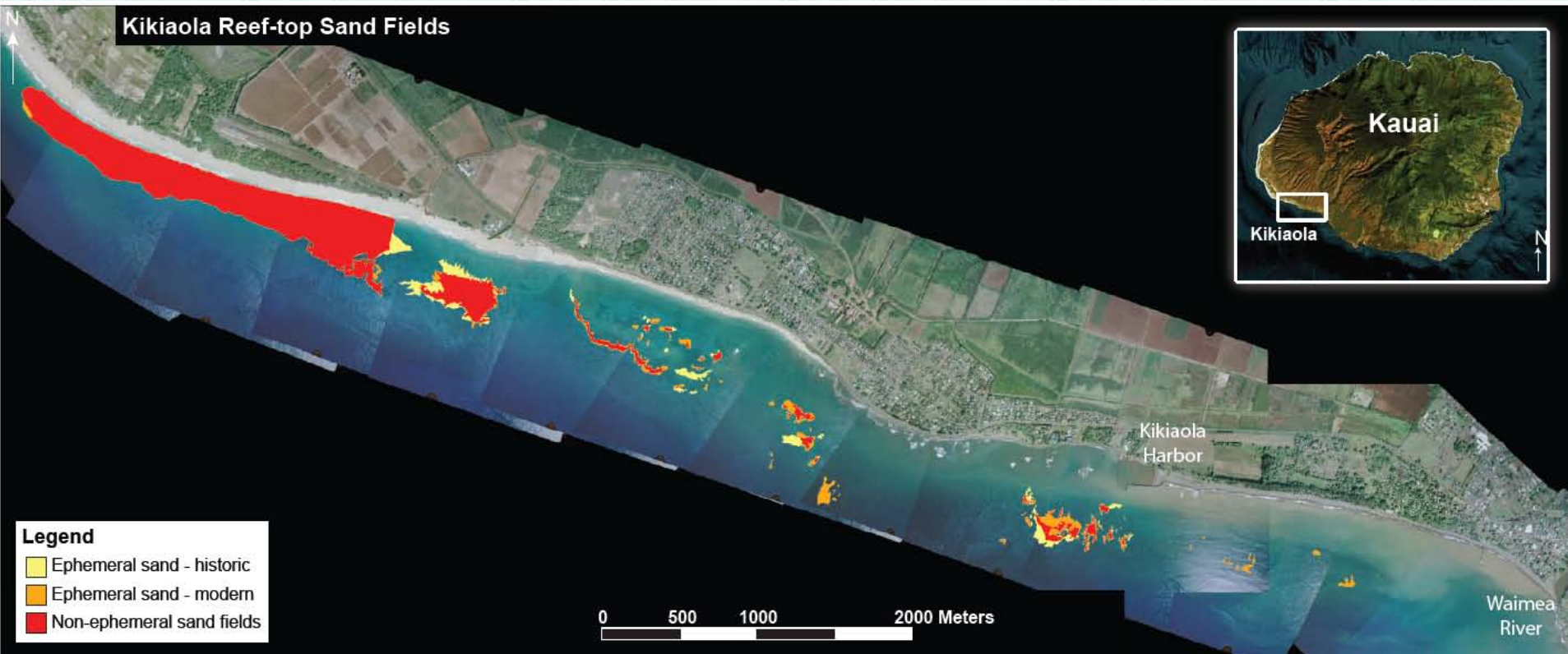


co-sponsored by:
State of Hawaii Department of Land and Natural Resources
US Army Corps of Engineers, Honolulu District



Large area of sand leading directly to mouth of Poipu Bay

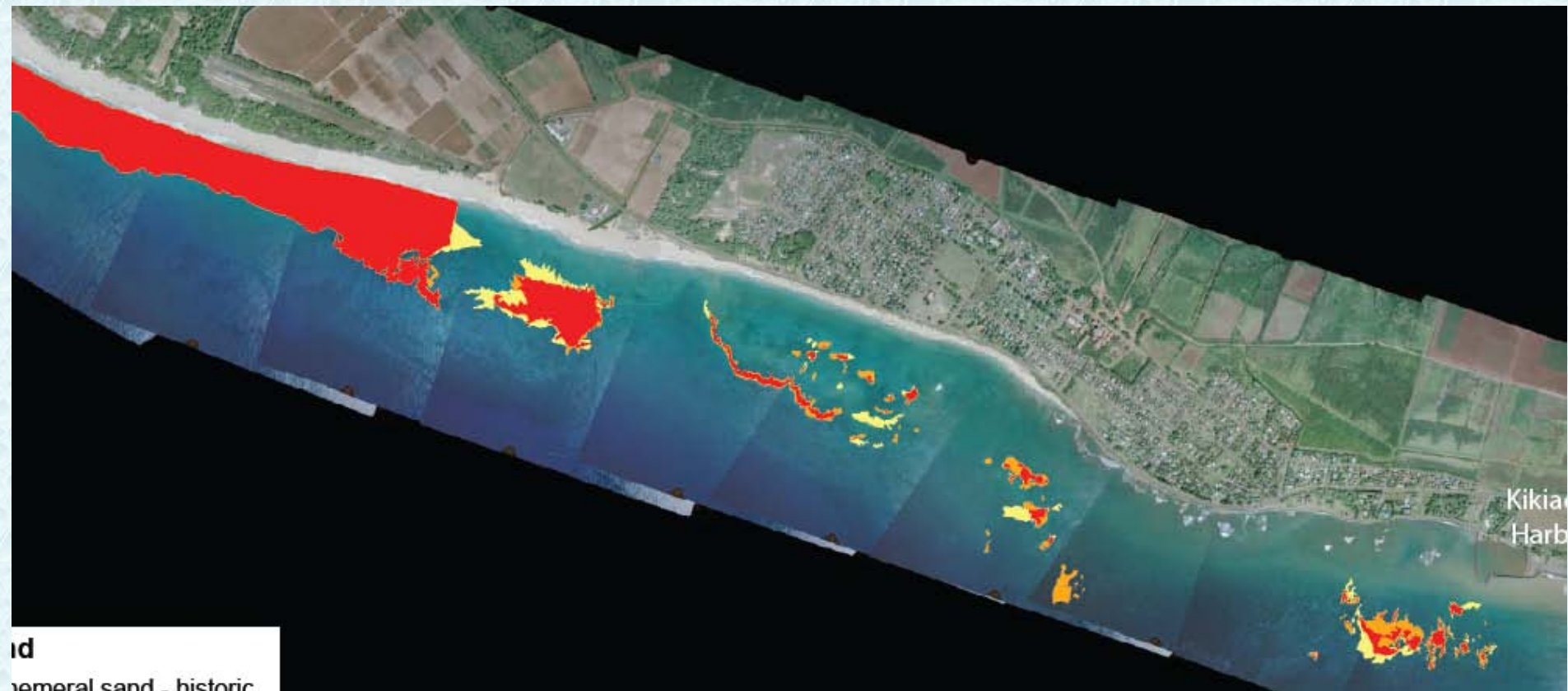




co-sponsored by:
 State of Hawaii Department of Land and Natural Resources
 US Army Corps of Engineers, Honolulu District



Problems with photo quality, and water clarity



id
general sand - historic

co-sponsored by:

State of Hawaii Department of Land and Natural Resources
US Army Corps of Engineers, Honolulu District



Thank You

co-sponsored by:

State of Hawaii Department of Land and Natural Resources

US Army Corps of Engineers, Honolulu District

