

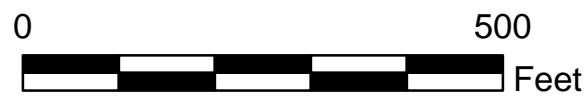


SOUTHEAST O'AHU RSM MAP LEGEND

	Beach Access Point		Jetty
	Sand Sample		Stormwater Drain
	Photograph		Stormwater Pumping Station
	Navigation Aid		Shoreline (2005) - Digitize
	Weather Sensor		Shoreline (2005) - GPS - Basalt Boulder
	Cultural Resource		Shoreline (2005) - GPS - Basalt/Coral
	Fence		Shoreline (2005) - GPS - Basalt/Sand
	Boat Ramp		Shoreline (2005) - GPS - Cemented Dune
	Swimming		Shoreline (2005) - GPS - Dumped Rocks
	Boogie Boarding		Shoreline (2005) - GPS - Rocky/Sand/Coral
	Kite Boarding		Shoreline (2005) - GPS - Rocky/Sand/Coral/Basalt Boulder
	Wind Surfing		Shoreline (2005) - GPS - Sandy Beach
	Scuba Diving		Beach Rock
	Camping		Revetment
	Park		Floodwall
	DOT Retention Wall		Jetty
	Pier Piling		Pier
	Pier		Sand Loss (1970 - 2005)
	Groin		Sand Gain (1970 - 2005)
	Retention Wall		Fishpond
	Sea Wall		

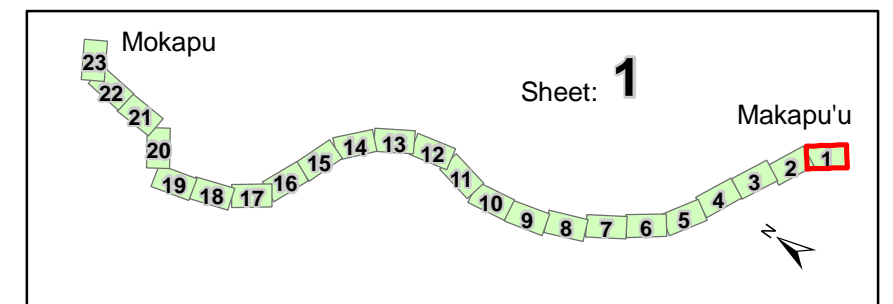


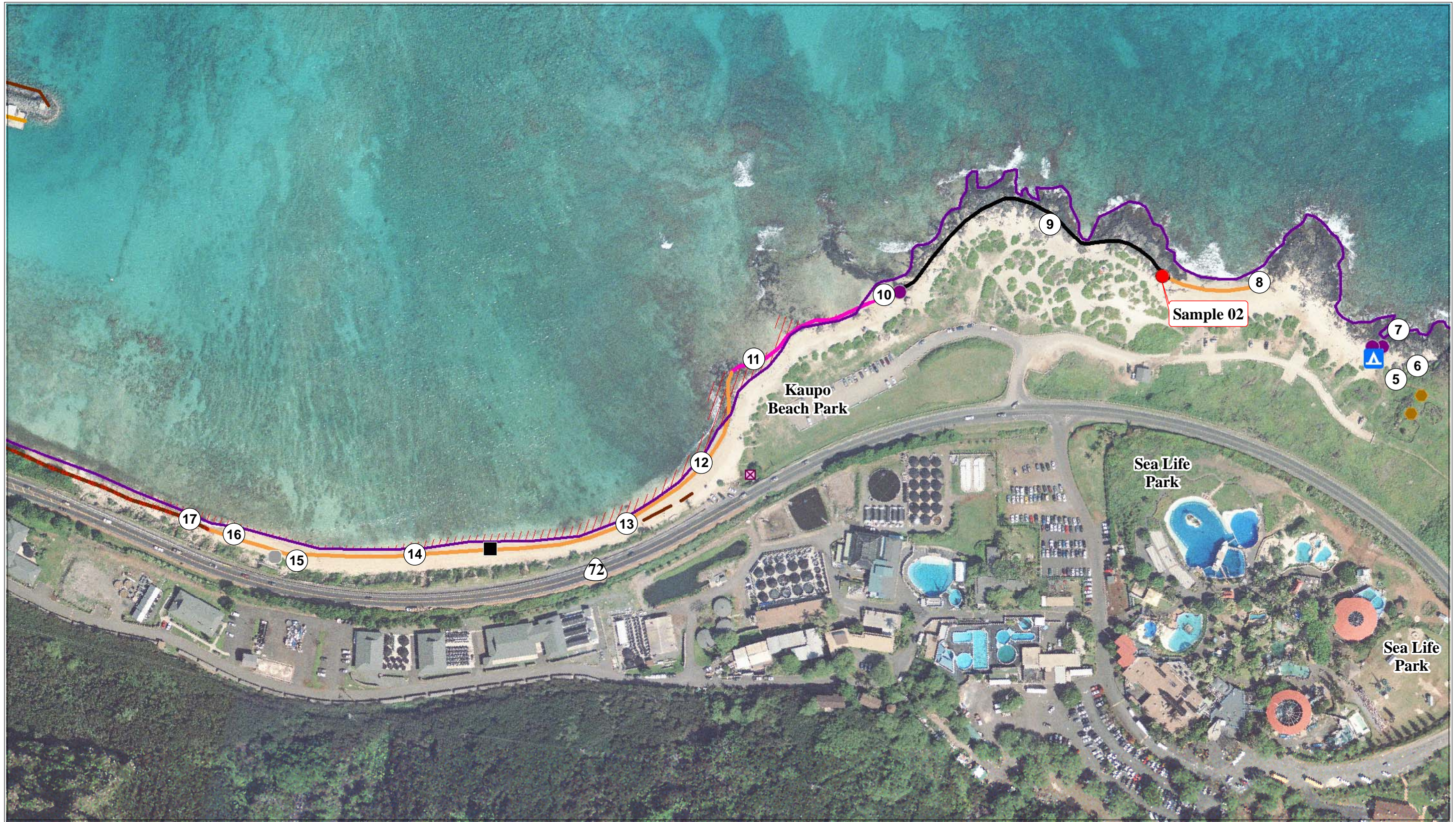
U.S. Army Corps
of Engineers
Honolulu District

Regional Sediment Management (2005 Series) Mokapu Point to Mokapu'u Point, Island of O'ahu

Notes:

1. Vertical reference is MSL (1983-2001).
2. This series focuses on the 2005 shoreline.
3. Imagery is dated 05/12/2005



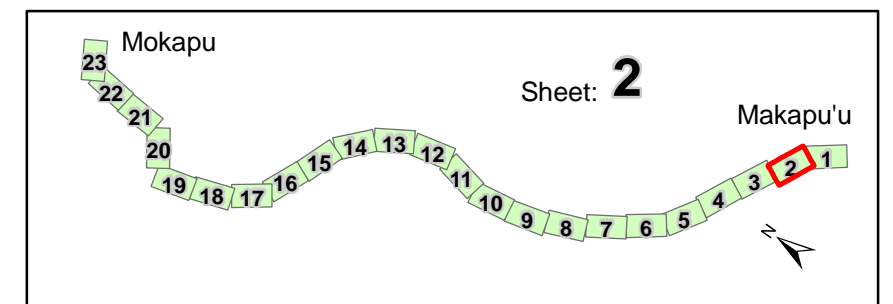


U.S. Army Corps
of Engineers
Honolulu District

Regional Sediment Management (2005 Series) Mokapu Point to Mokapu'u Point, Island of O'ahu

Notes:

1. Vertical reference is MSL (1983-2001).
2. This series focuses on the 2005 shoreline.
3. Imagery is dated 05/12/2005



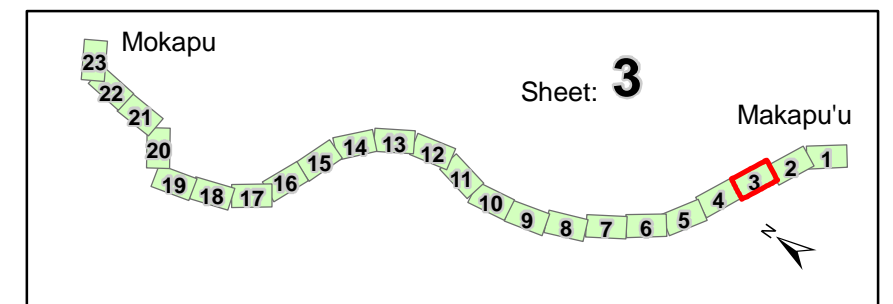


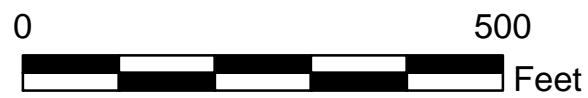
U.S. Army Corps
of Engineers
Honolulu District

Regional Sediment Management (2005 Series) Mokapu Point to Mokapu'u Point, Island of O'ahu

Notes:

1. Vertical reference is MSL (1983-2001).
2. This series focuses on the 2005 shoreline.
3. Imagery is dated 05/12/2005



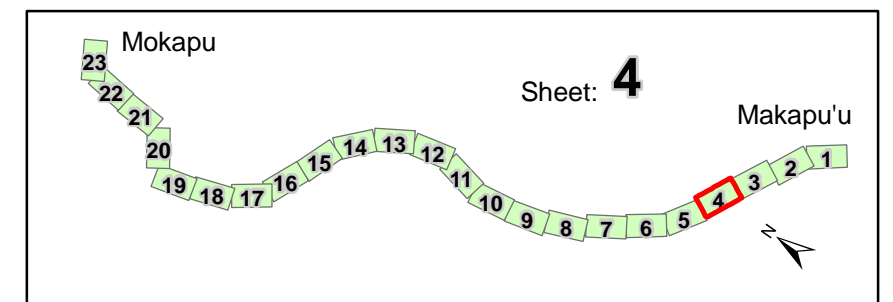


U.S. Army Corps
of Engineers
Honolulu District

Regional Sediment Management (2005 Series) Mokapu Point to Mokapu'u Point, Island of O'ahu

Notes:

1. Vertical reference is MSL (1983-2001).
2. This series focuses on the 2005 shoreline.
3. Imagery is dated 05/12/2005



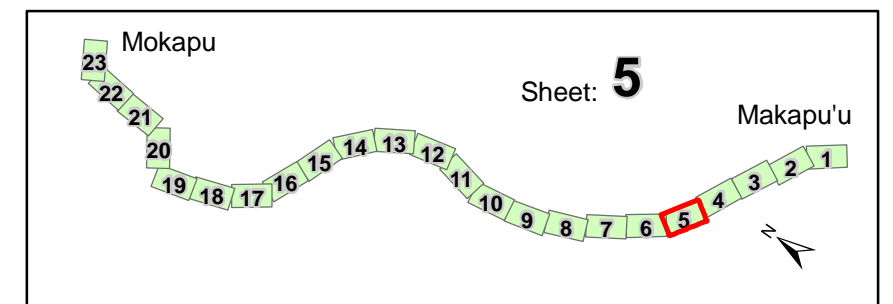


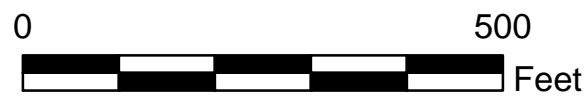
U.S. Army Corps
of Engineers
Honolulu District

Regional Sediment Management (2005 Series) Mokapu Point to Mokapu'u Point, Island of O'ahu

Notes:

1. Vertical reference is MSL (1983-2001).
2. This series focuses on the 2005 shoreline.
3. Imagery is dated 05/12/2005



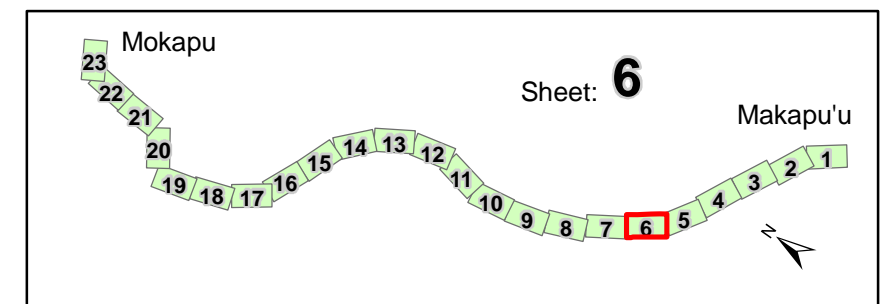


U.S. Army Corps
of Engineers
Honolulu District

Regional Sediment Management (2005 Series)
Mokapu Point to Mokapu'u Point, Island of O'ahu

Notes:

1. Vertical reference is MSL (1983-2001).
2. This series focuses on the 2005 shoreline.
3. Imagery is dated 05/12/2005



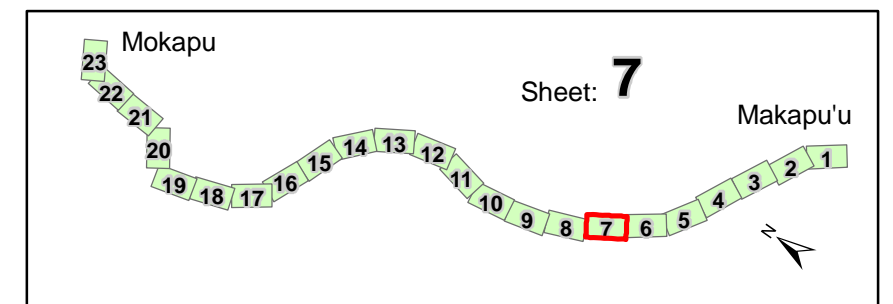


U.S. Army Corps
of Engineers
Honolulu District

**Regional Sediment Management (2005 Series)
Mokapu Point to Mokapu'u Point, Island of O'ahu**

Notes:

1. Vertical reference is MSL (1983-2001).
2. This series focuses on the 2005 shoreline.
3. Imagery is dated 05/12/2005



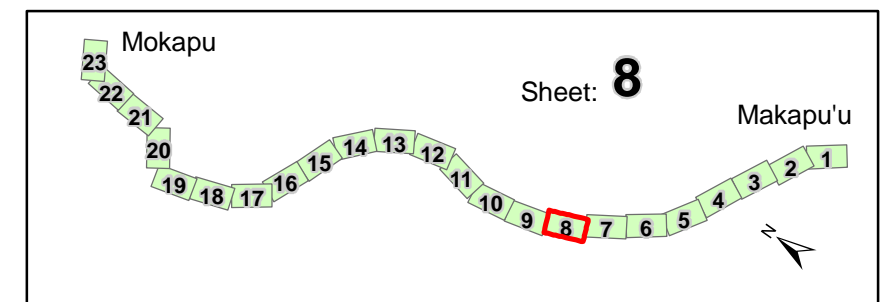


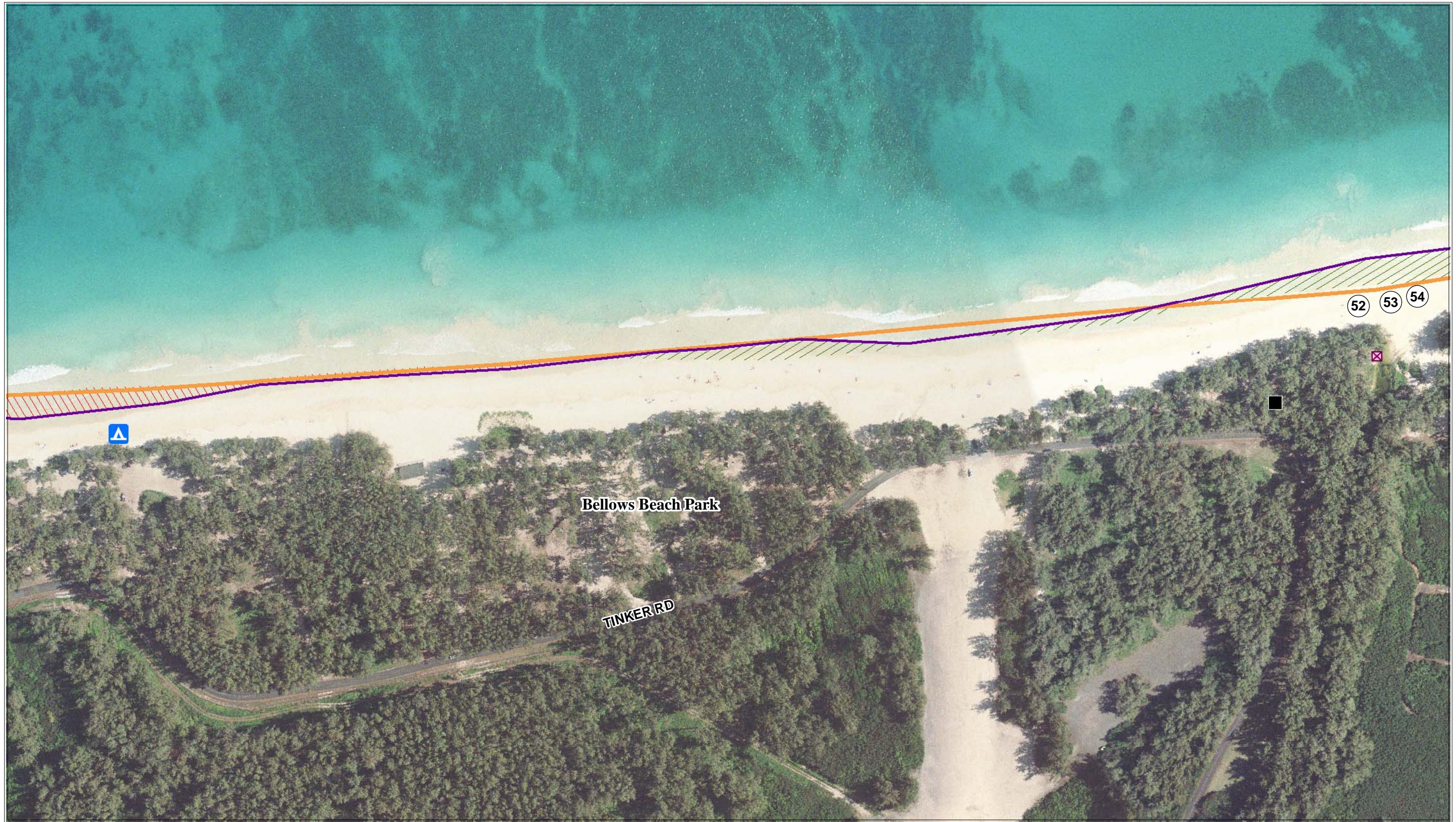
U.S. Army Corps
of Engineers
Honolulu District

Regional Sediment Management (2005 Series) Mokapu Point to Mokapu'u Point, Island of O'ahu

Notes:

1. Vertical reference is MSL (1983-2001).
2. This series focuses on the 2005 shoreline.
3. Imagery is dated 05/12/2005



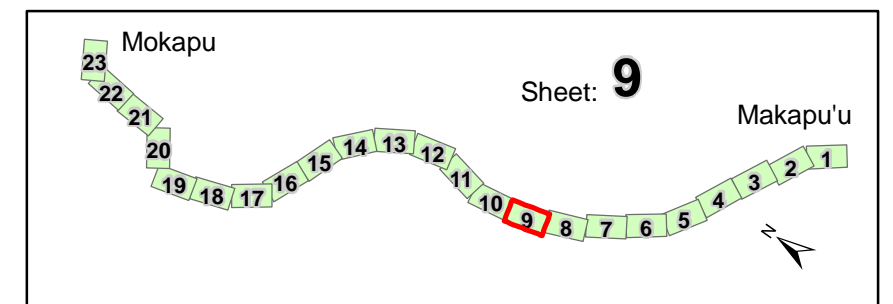


U.S. Army Corps
of Engineers
Honolulu District

Regional Sediment Management (2005 Series)
Mokapu Point to Mokapu'u Point, Island of O'ahu

Notes:

1. Vertical reference is MSL (1983-2001).
2. This series focuses on the 2005 shoreline.
3. Imagery is dated 05/12/2005

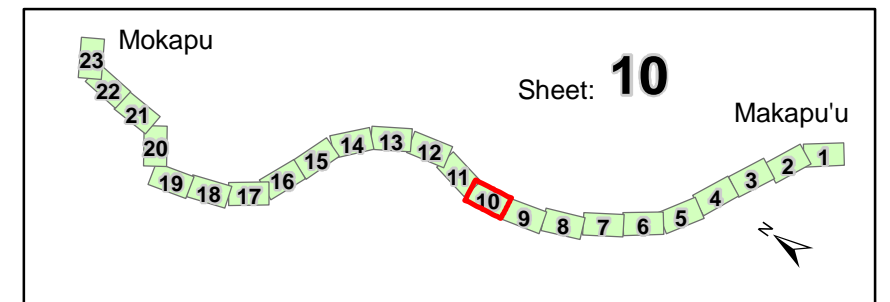




U.S. Army Corps
of Engineers
Honolulu District

Regional Sediment Management (2005 Series)
Mokapu Point to Mokapu'u Point, Island of O'ahu

- Notes:
1. Vertical reference is MSL (1983-2001).
 2. This series focuses on the 2005 shoreline.
 3. Imagery is dated 05/12/2005



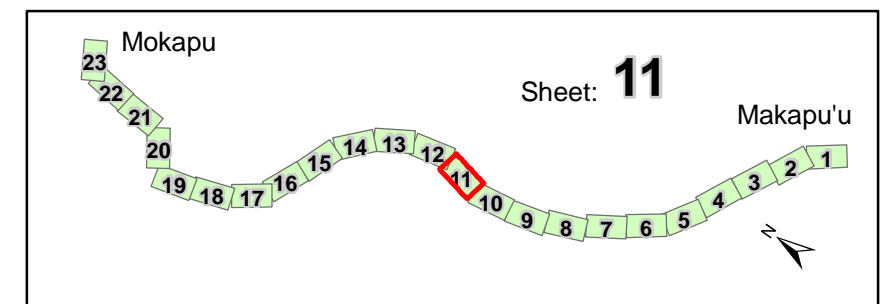


U.S. Army Corps
of Engineers
Honolulu District

Regional Sediment Management (2005 Series) Mokapu Point to Mokapu'u Point, Island of O'ahu

Notes:

1. Vertical reference is MSL (1983-2001).
2. This series focuses on the 2005 shoreline.
3. Imagery is dated 05/12/2005



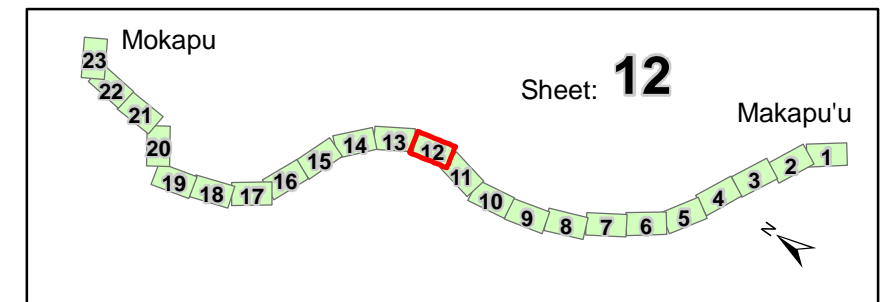


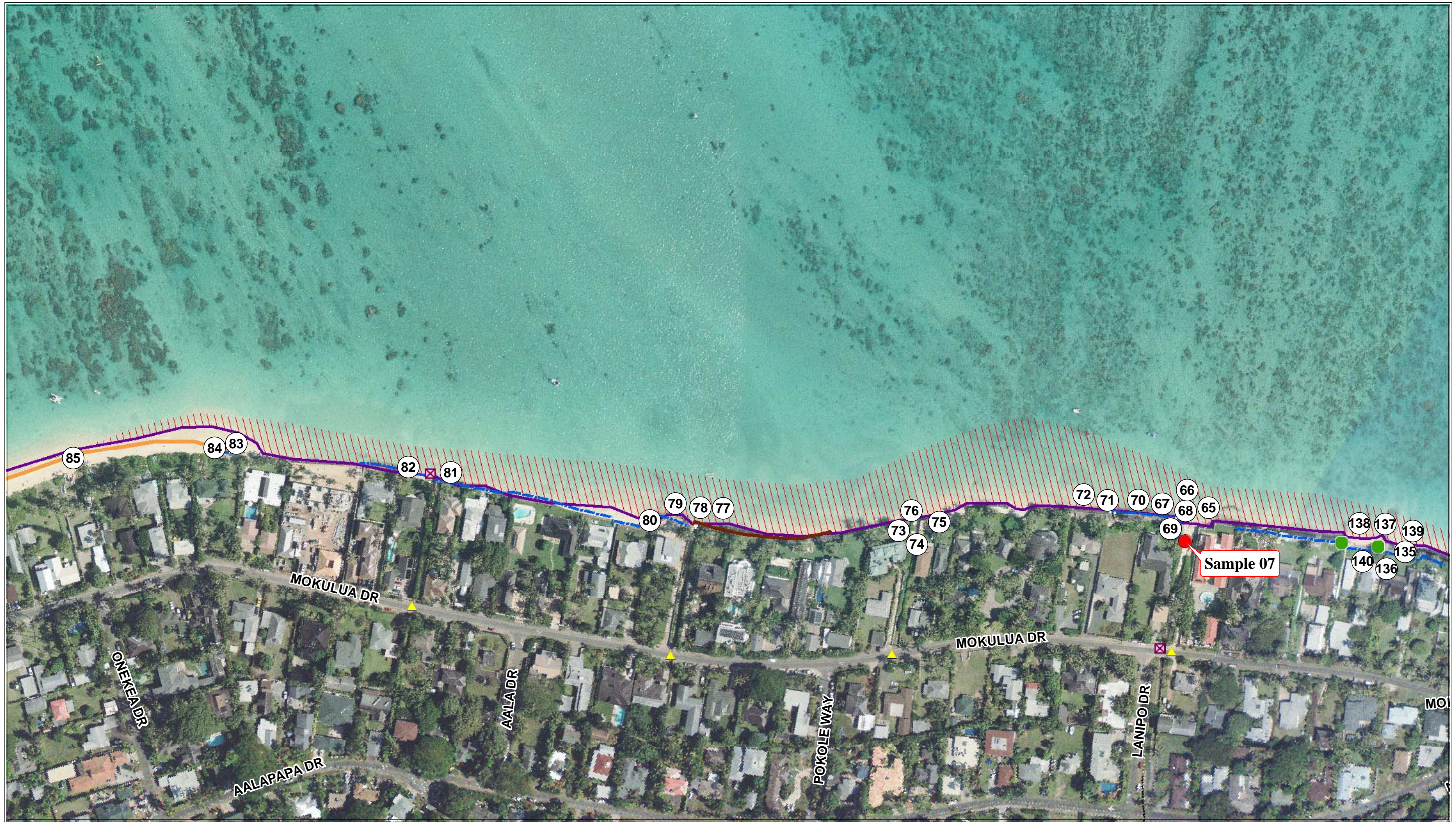
U.S. Army Corps
of Engineers
Honolulu District

Regional Sediment Management (2005 Series)
Mokapu Point to Mokapu'u Point, Island of O'ahu

Notes:

1. Vertical reference is MSL (1983-2001).
2. This series focuses on the 2005 shoreline.
3. Imagery is dated 05/12/2005



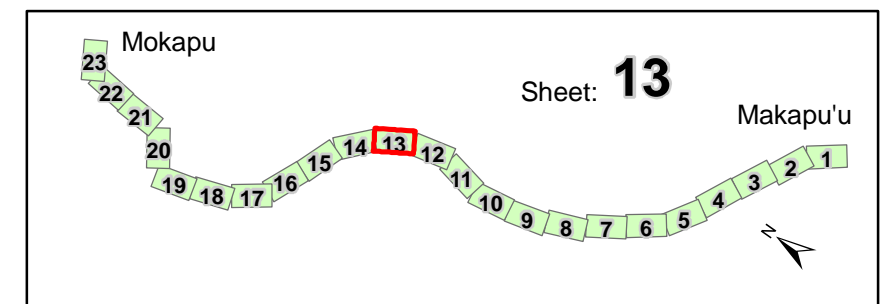


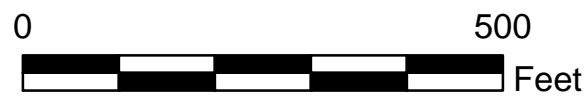
U.S. Army Corps
of Engineers
Honolulu District

Regional Sediment Management (2005 Series) Mokapu Point to Mokapu'u Point, Island of O'ahu

Notes:

1. Vertical reference is MSL (1983-2001).
2. This series focuses on the 2005 shoreline.
3. Imagery is dated 05/12/2005



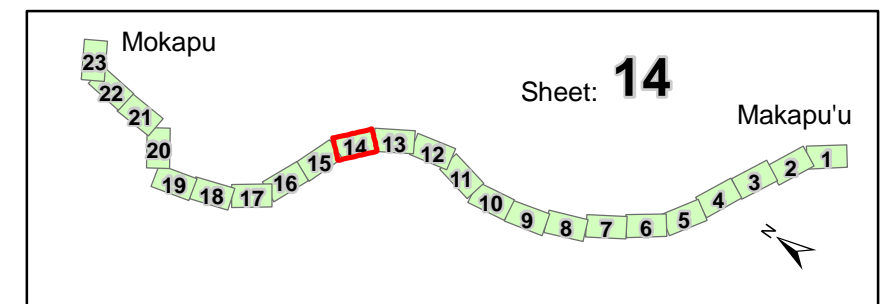


U.S. Army Corps
of Engineers
Honolulu District

Regional Sediment Management (2005 Series) Mokapu Point to Mokapu'u Point, Island of O'ahu

Notes:

1. Vertical reference is MSL (1983-2001).
2. This series focuses on the 2005 shoreline.
3. Imagery is dated 05/12/2005

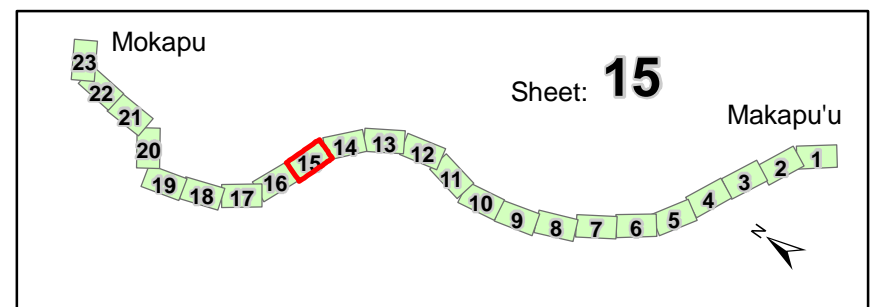


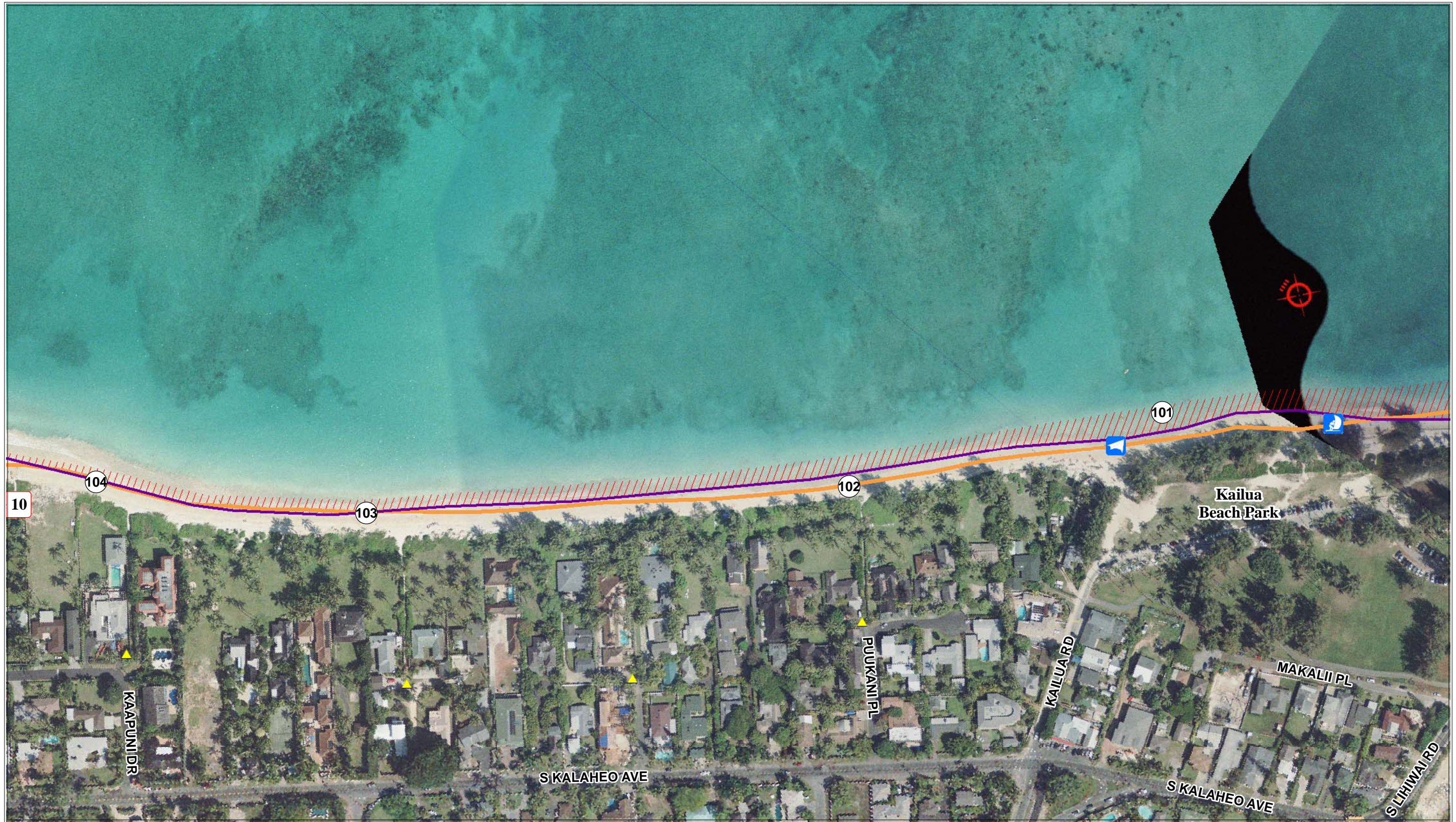
Sheet: **14**



Regional Sediment Management (2005 Series)
Mokapu Point to Mokapu'u Point, Island of O'ahu

- Notes:
1. Vertical reference is MSL (1983-2001).
 2. This series focuses on the 2005 shoreline.
 3. Imagery is dated 05/12/2005





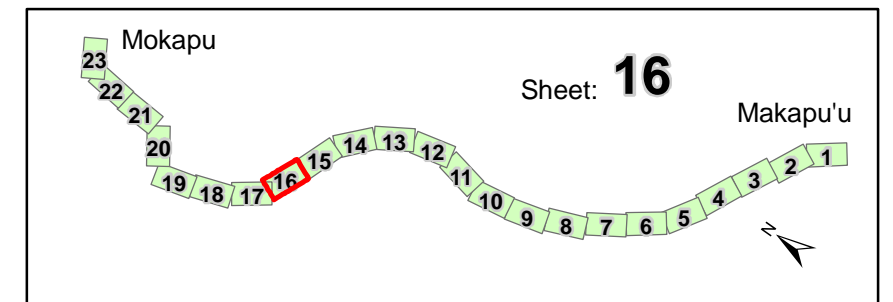
U.S. Army Corps
of Engineers
Honolulu District

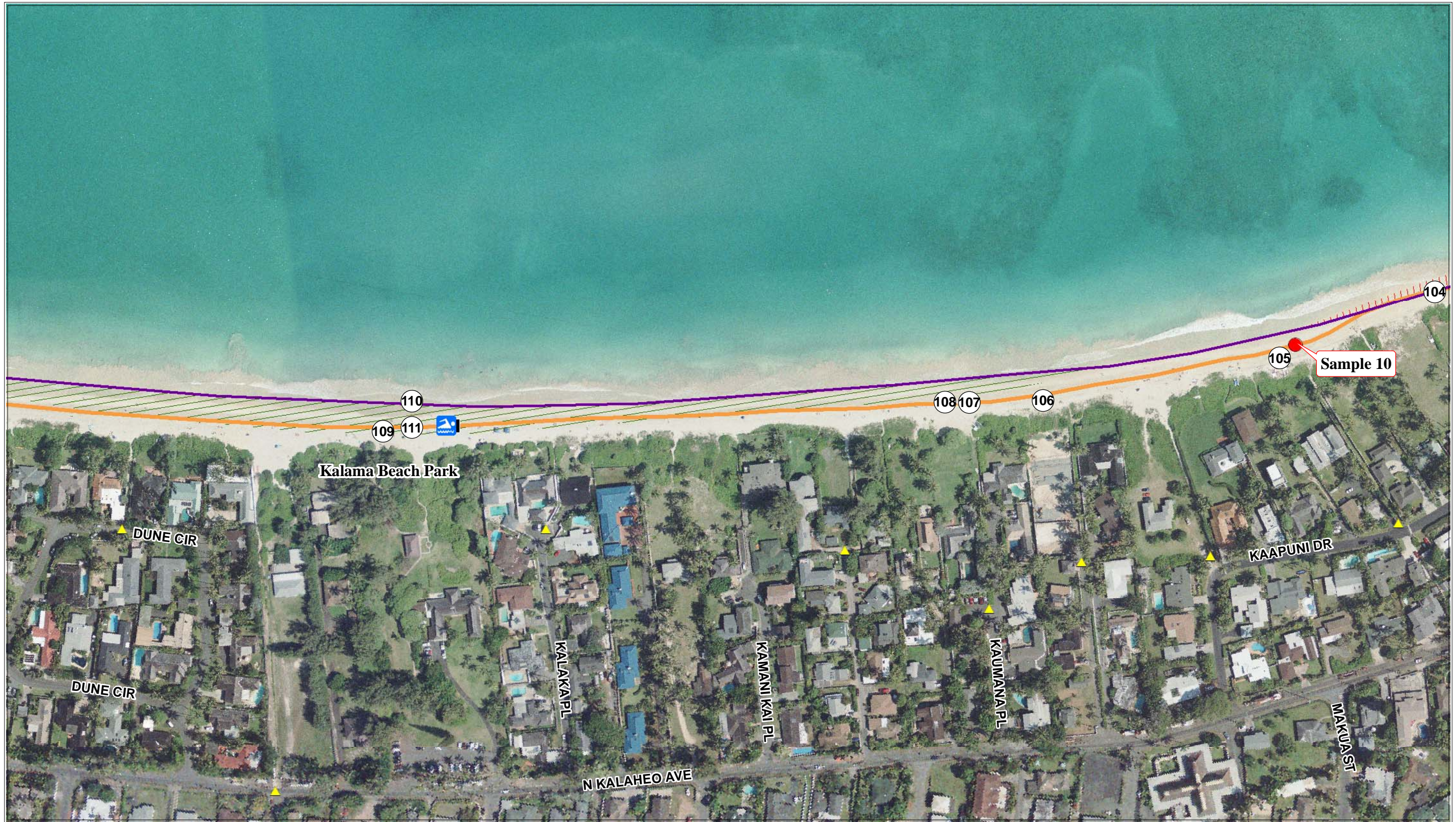
Regional Sediment Management (2005 Series) Mokapu Point to Mokapu'u Point, Island of O'ahu



Notes:

1. Vertical reference is MSL (1983-2001).
2. This series focuses on the 2005 shoreline.
3. Imagery is dated 05/12/2005



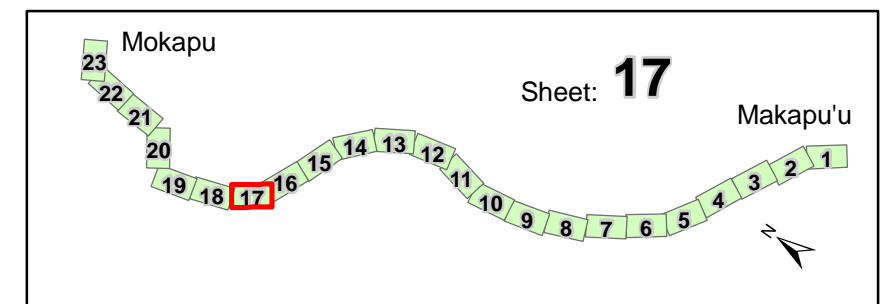


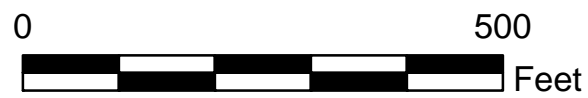
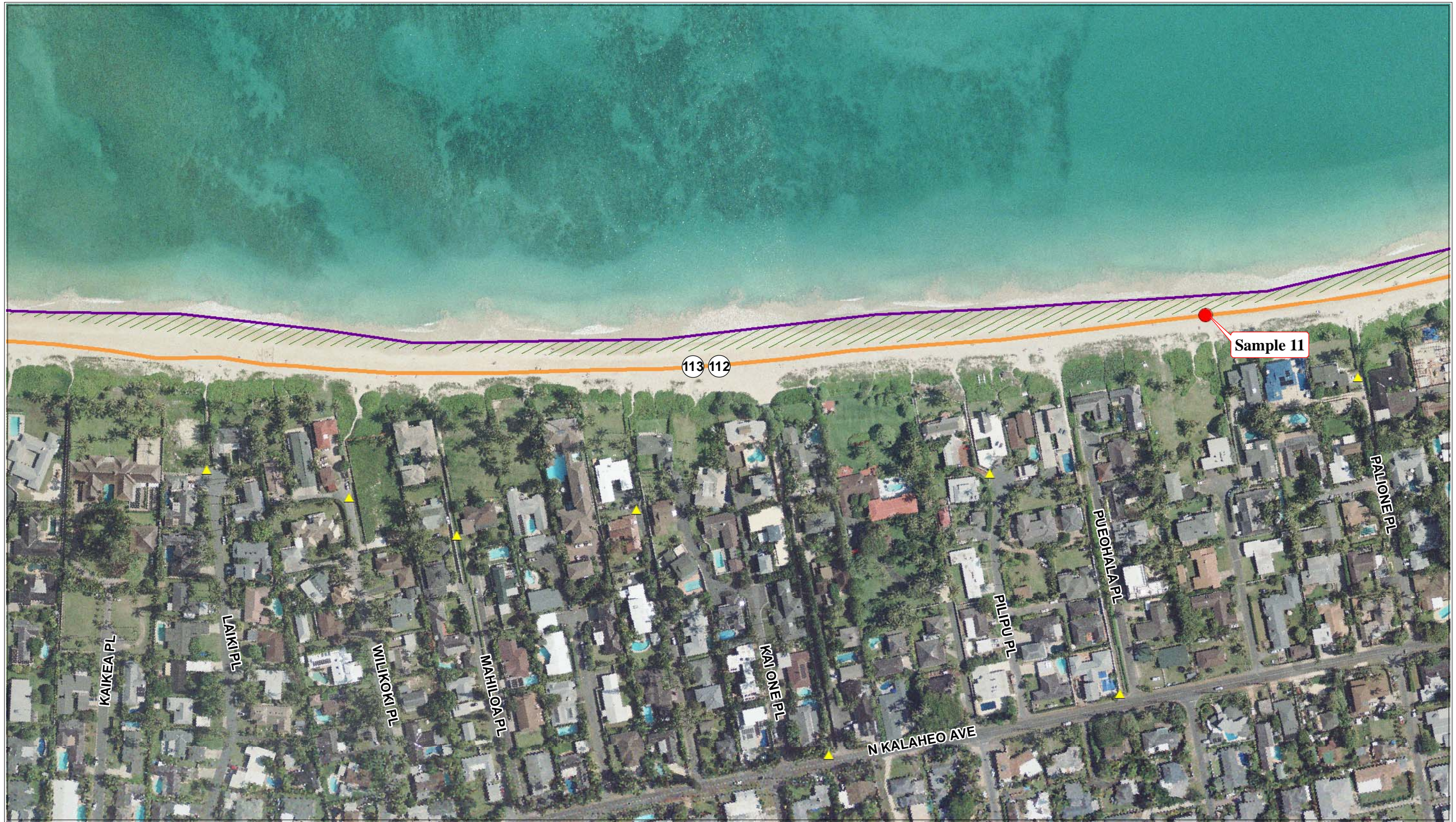
U.S. Army Corps
of Engineers
Honolulu District

**Regional Sediment Management (2005 Series)
Mokapu Point to Mokapu'u Point, Island of O'ahu**

Notes:

1. Vertical reference is MSL (1983-2001).
2. This series focuses on the 2005 shoreline.
3. Imagery is dated 05/12/2005



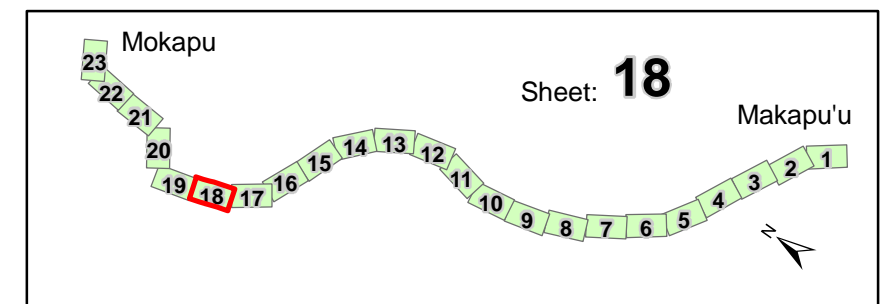


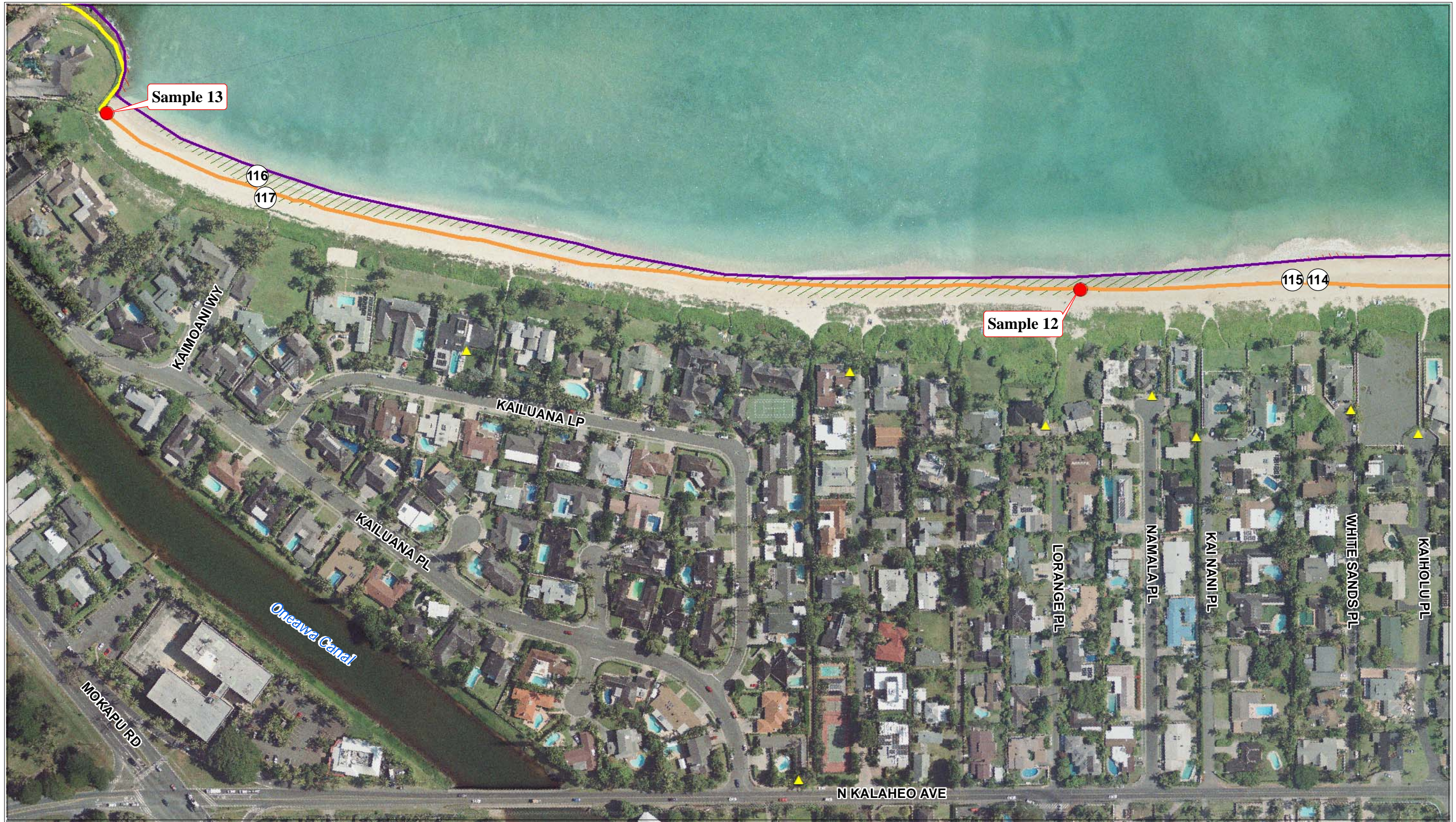
U.S. Army Corps
of Engineers
Honolulu District

Regional Sediment Management (2005 Series) Mokapu Point to Mokapu'u Point, Island of O'ahu

Notes:

1. Vertical reference is MSL (1983-2001).
2. This series focuses on the 2005 shoreline.
3. Imagery is dated 05/12/2005



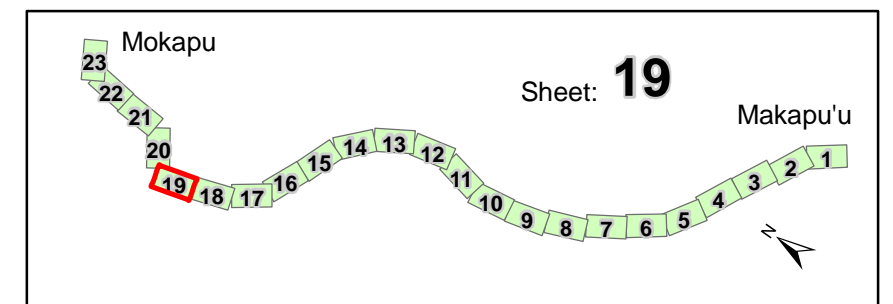


U.S. Army Corps
of Engineers
Honolulu District

Regional Sediment Management (2005 Series)
Mokapu Point to Mokapu'u Point, Island of O'ahu

Notes:

1. Vertical reference is MSL (1983-2001).
2. This series focuses on the 2005 shoreline.
3. Imagery is dated 05/12/2005



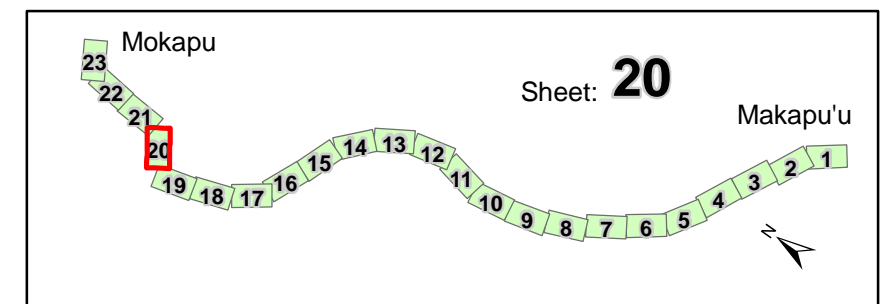


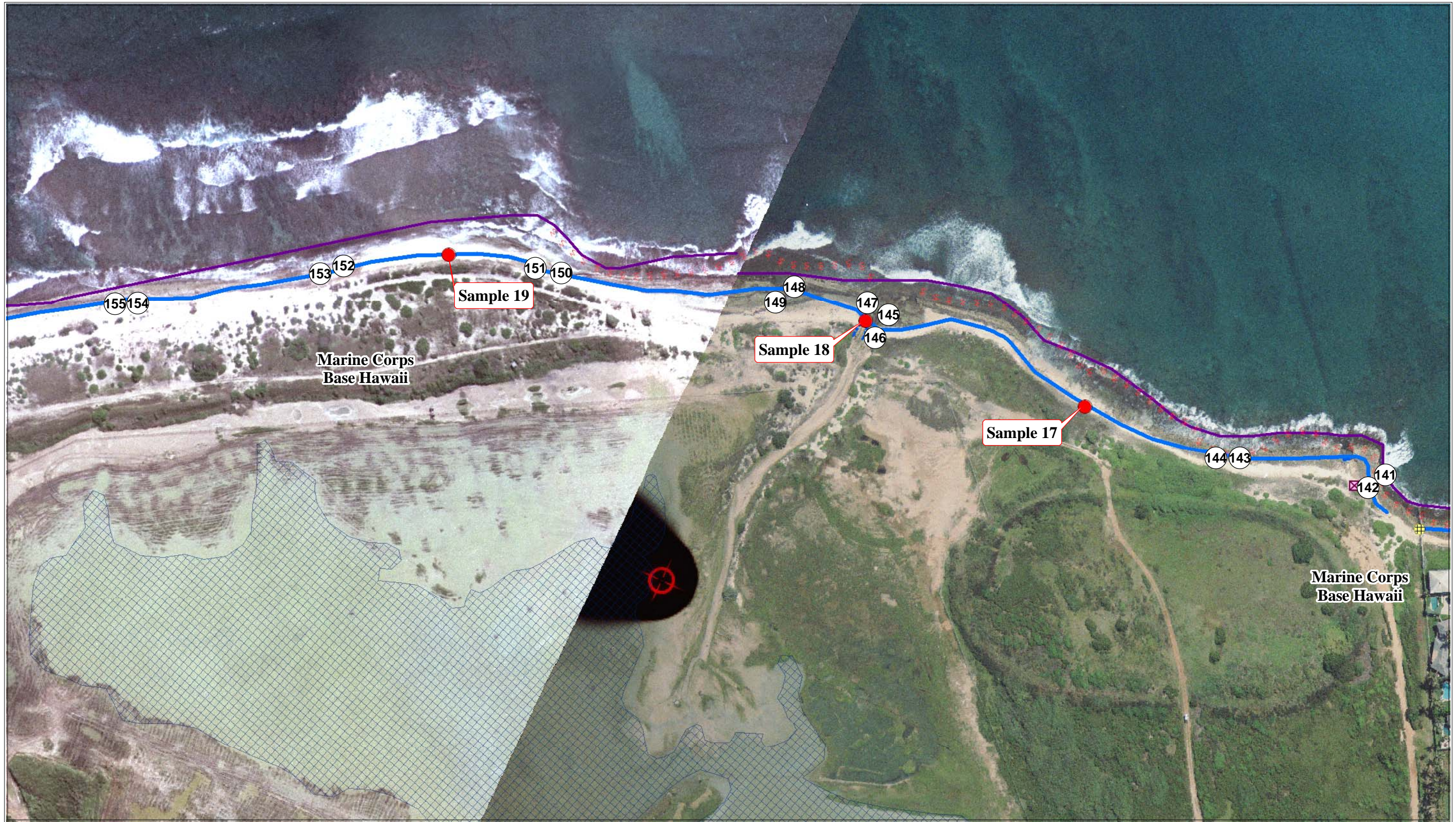
U.S. Army Corps
of Engineers
Honolulu District

Regional Sediment Management (2005 Series) Mokapu Point to Mokapu'u Point, Island of O'ahu

Notes:

1. Vertical reference is MSL (1983-2001).
2. This series focuses on the 2005 shoreline.
3. Imagery is dated 05/12/2005

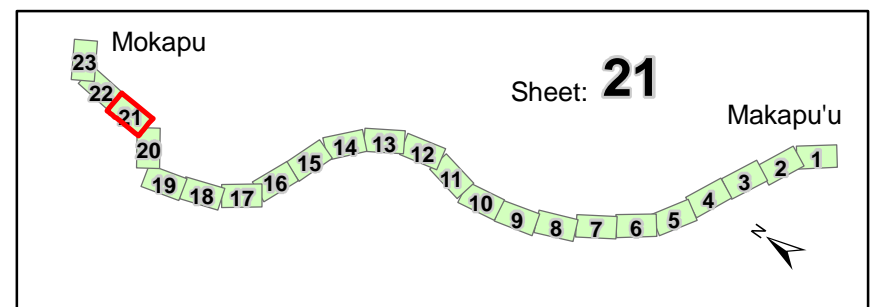


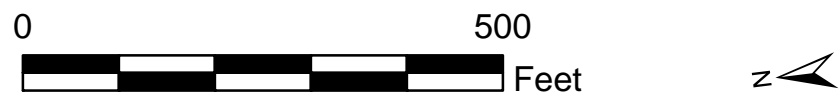


Regional Sediment Management (2005 Series)
Mokapu Point to Mokapu'u Point, Island of O'ahu



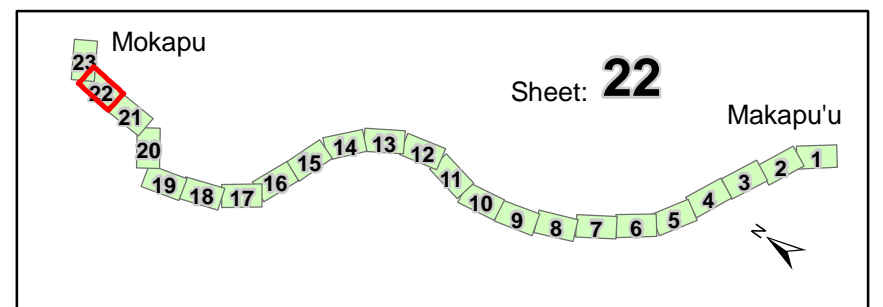
- Notes:
1. Vertical reference is MSL (1983-2001).
 2. This series focuses on the 2005 shoreline.
 3. Imagery is dated 05/12/2005

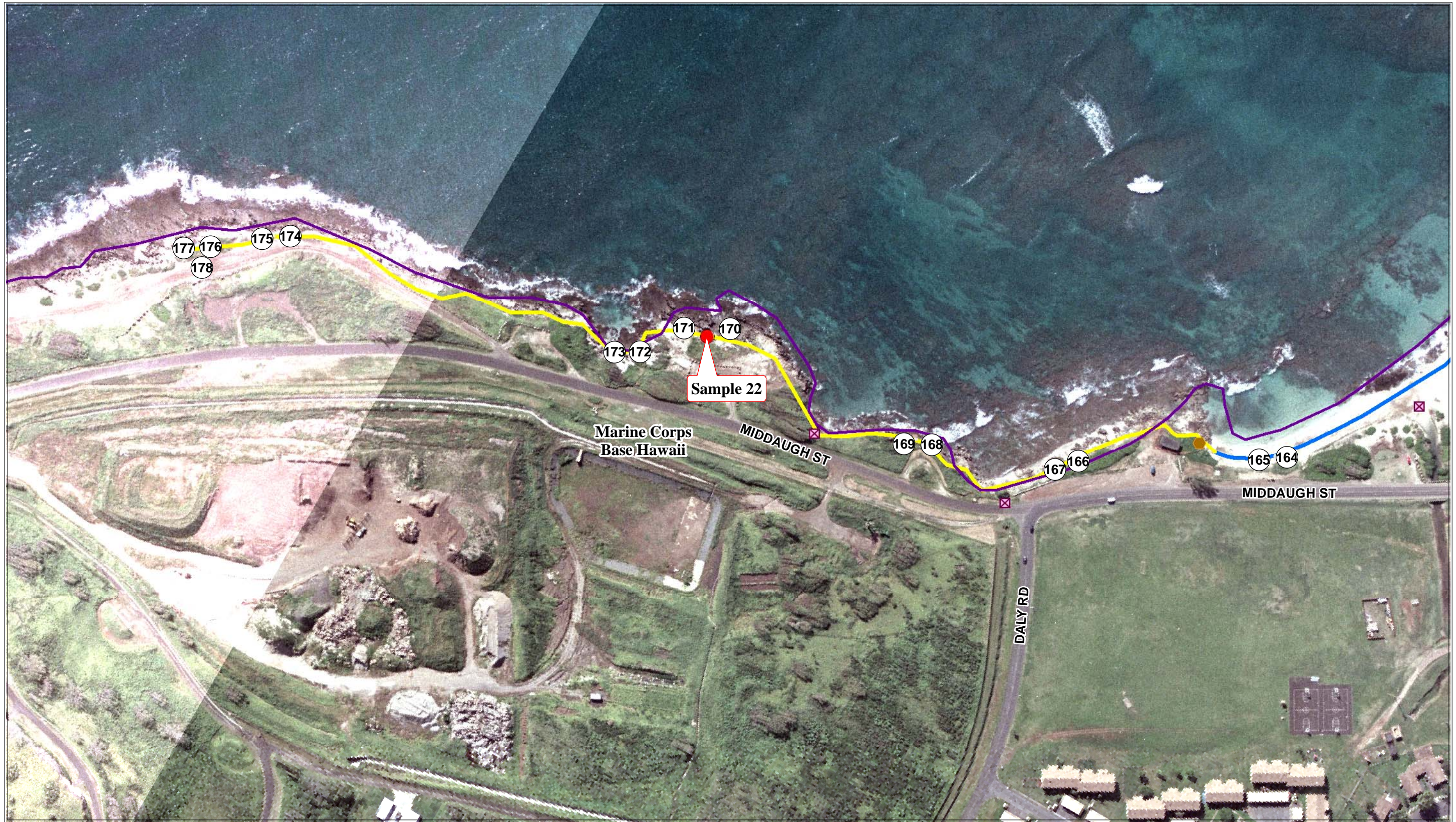




Regional Sediment Management (2005 Series)
Mokapu Point to Mokapu'u Point, Island of O'ahu

- Notes:
1. Vertical reference is MSL (1983-2001).
 2. This series focuses on the 2005 shoreline.
 3. Imagery is dated 05/12/2005





U.S. Army Corps
of Engineers
Honolulu District

Regional Sediment Management (2005 Series) Mokapu Point to Mokapu'u Point, Island of O'ahu

Notes:

1. Vertical reference is MSL (1983-2001).
2. This series focuses on the 2005 shoreline.
3. Imagery is dated 05/12/2005

