

Maui Reef-top Sand Field Studies

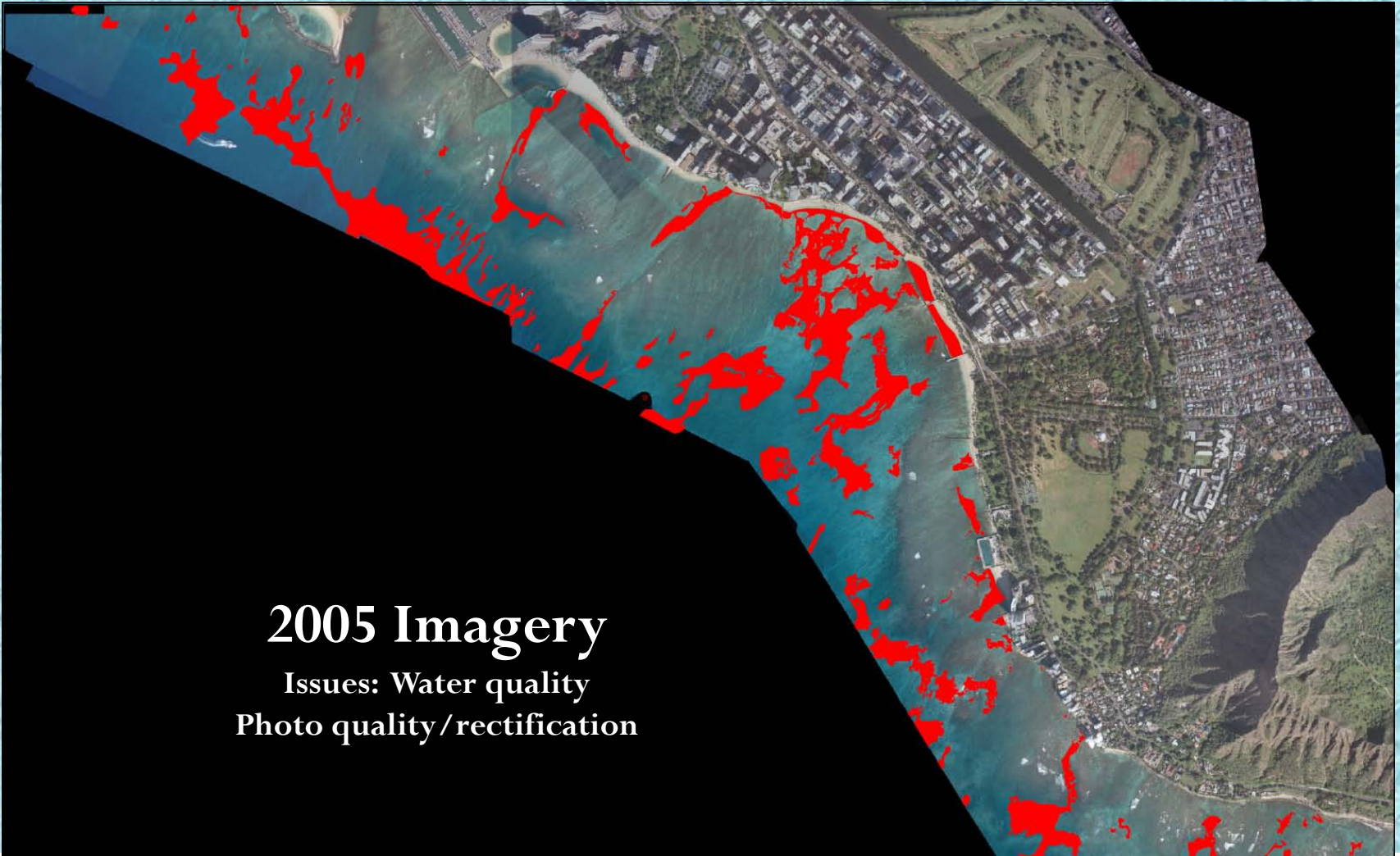
co-sponsored by:

State of Hawaii Department of Land and Natural Resources

US Army Corps of Engineers, Honolulu District



Example from Waikiki



2005 Imagery

Issues: Water quality
Photo quality/rectification

co-sponsored by:

State of Hawaii Department of Land and Natural Resources

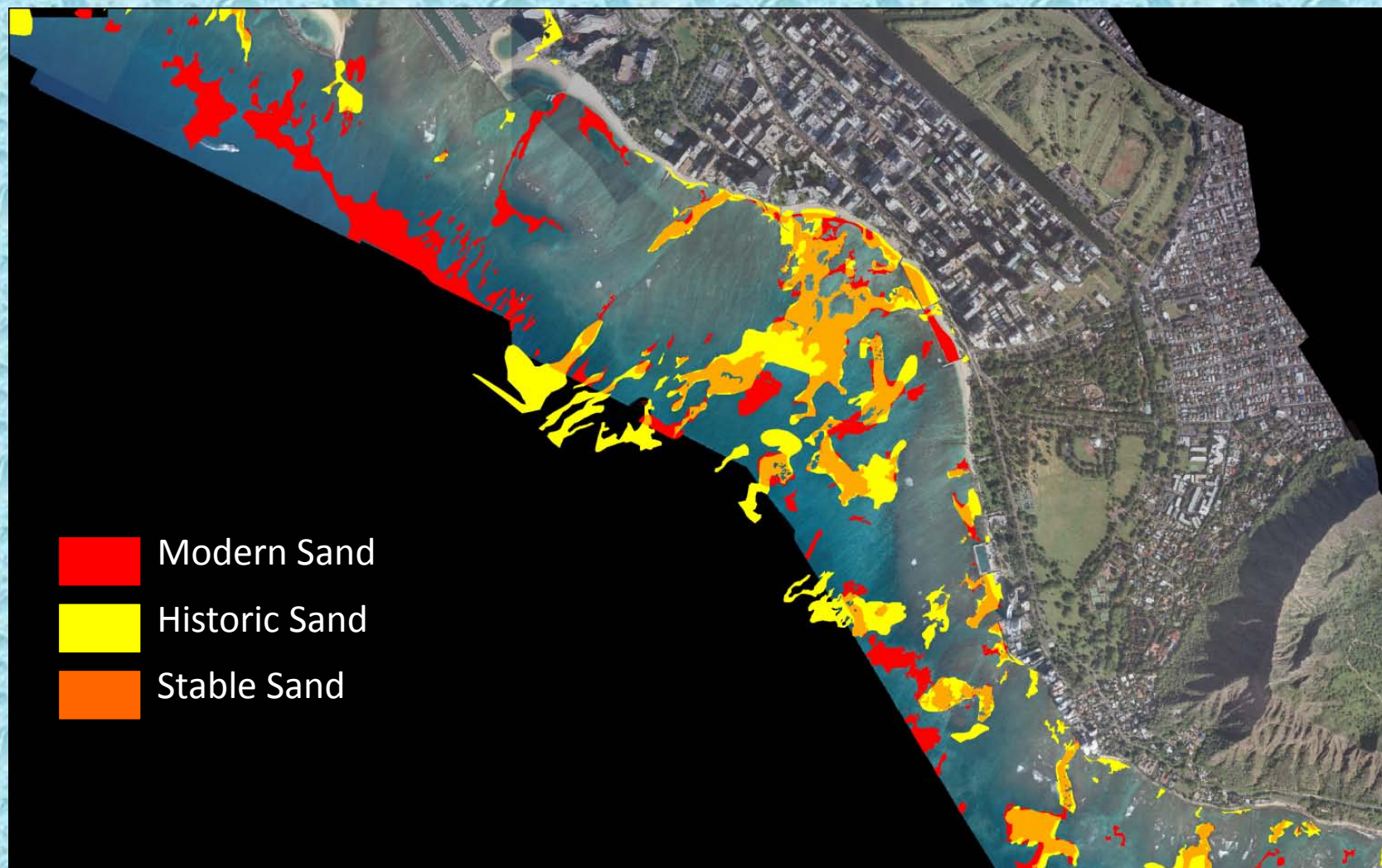
US Army Corps of Engineers, Honolulu District





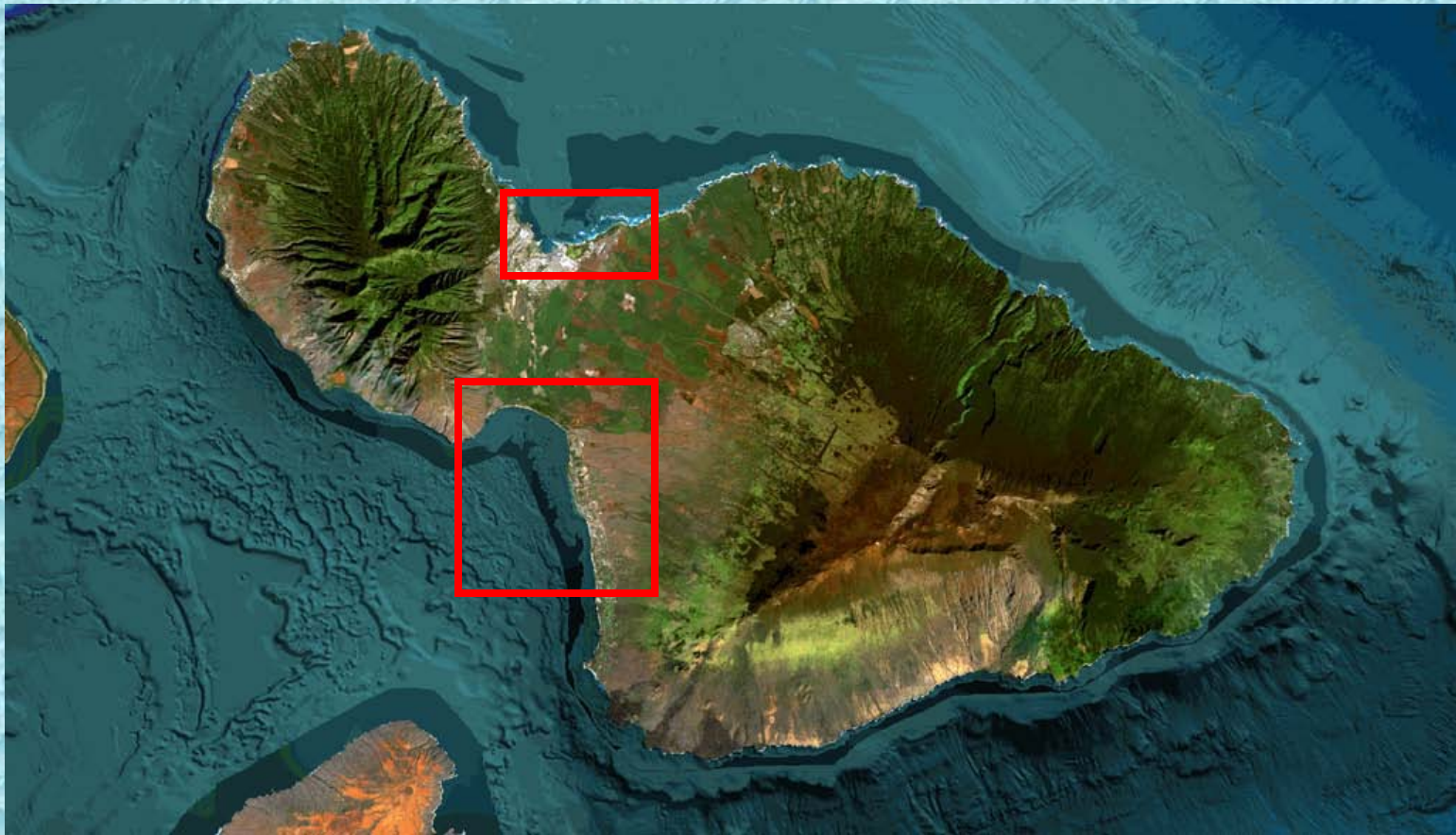
co-sponsored by:
State of Hawaii Department of Land and Natural Resources
US Army Corps of Engineers, Honolulu District





co-sponsored by:
State of Hawaii Department of Land and Natural Resources
US Army Corps of Engineers, Honolulu District





co-sponsored by:

State of Hawaii Department of Land and Natural Resources

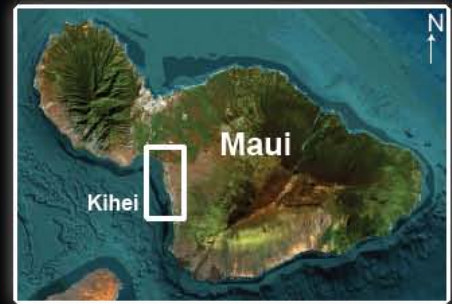
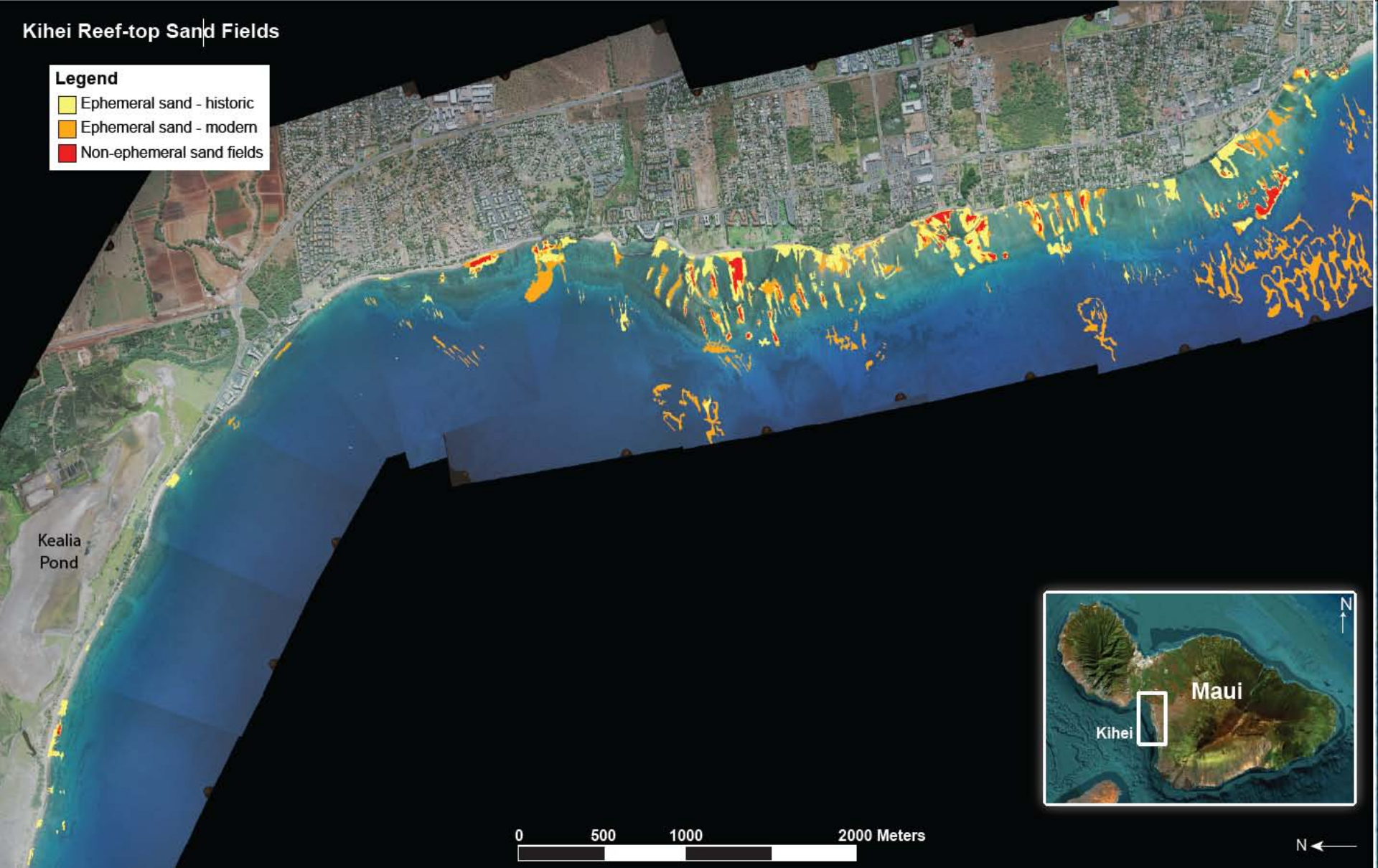
US Army Corps of Engineers, Honolulu District



Kihei Reef-top Sand Fields

Legend

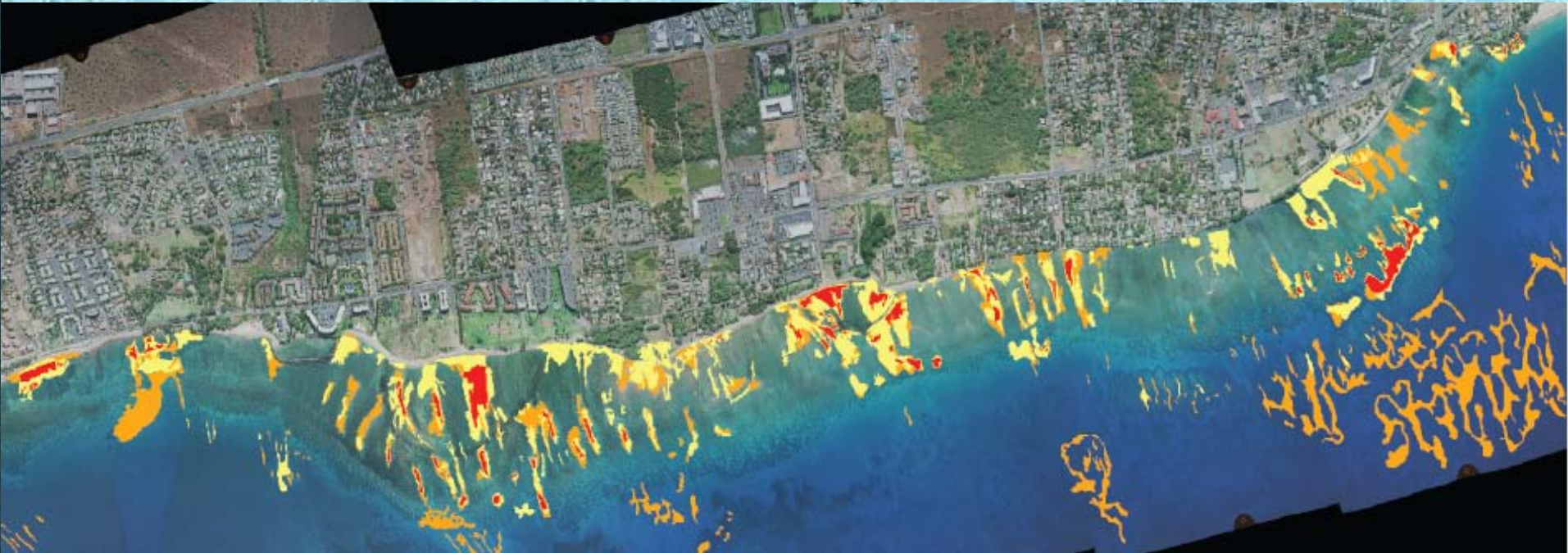
- Ephemeral sand - historic
- Ephemeral sand - modern
- Non-ephemeral sand fields



co-sponsored by:
State of Hawaii Department of Land and Natural Resources
US Army Corps of Engineers, Honolulu District



Many areas need field checking to distinguish between sand, gravel, and hard bottom



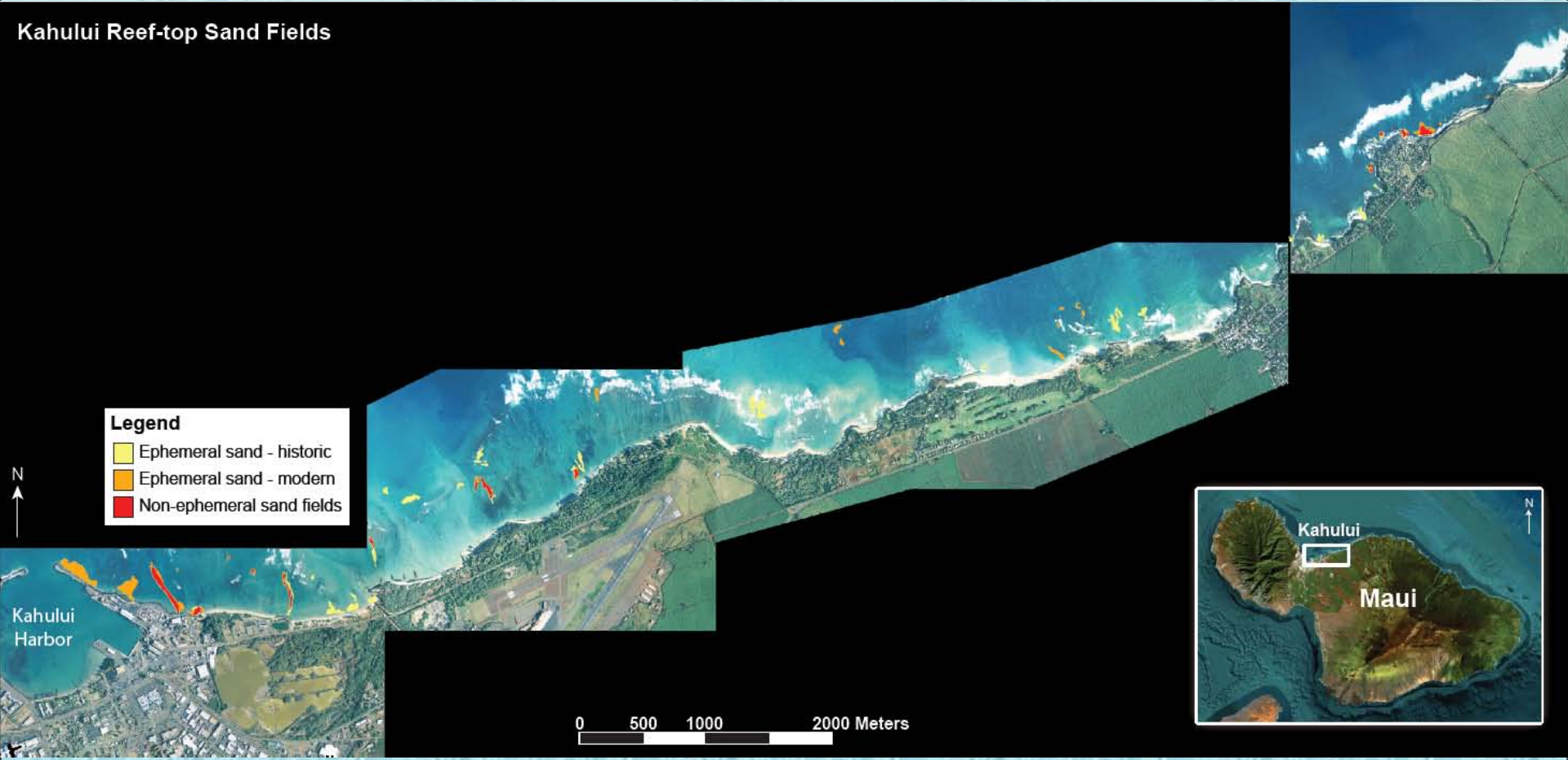
co-sponsored by:

State of Hawaii Department of Land and Natural Resources

US Army Corps of Engineers, Honolulu District



Kahului Reef-top Sand Fields






co-sponsored by:
State of Hawaii Department of Land and Natural Resources
US Army Corps of Engineers, Honolulu District



Problems with photo quality, and water clarity

Legend

-  Ephemeral sand - historic
-  Ephemeral sand - modern
-  Non-ephemeral sand fields



co-sponsored by:

State of Hawaii Department of Land and Natural Resources

US Army Corps of Engineers, Honolulu District



Thank You

co-sponsored by:

State of Hawaii Department of Land and Natural Resources

US Army Corps of Engineers, Honolulu District

