



Wave & Current Data Collection

Deployment: 9 August 2005

Retrieval: 14 September 2005



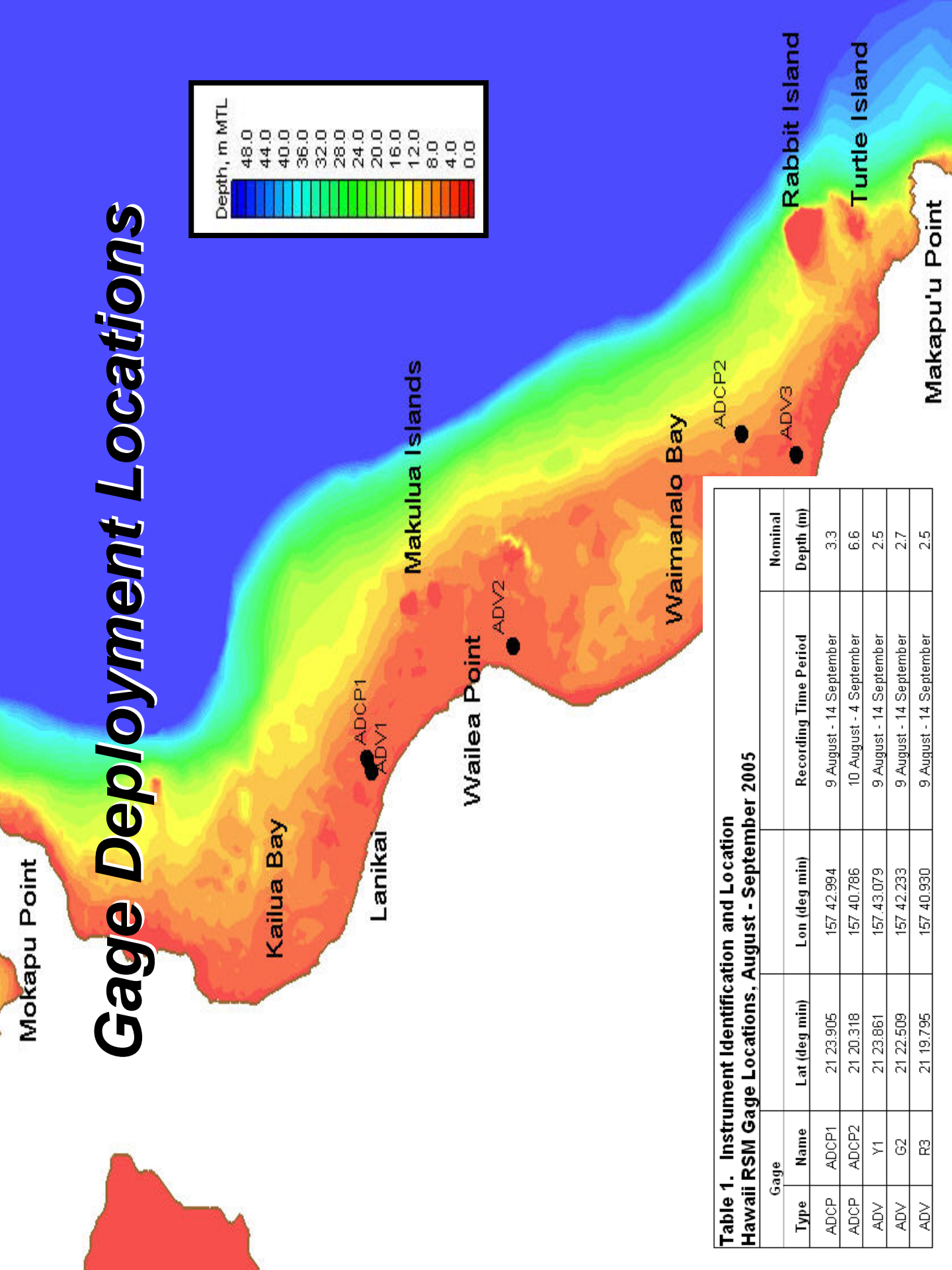
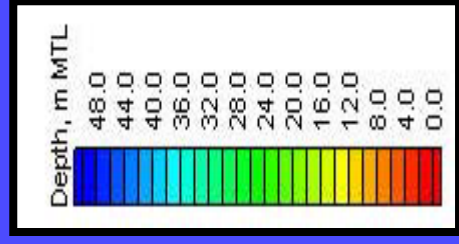
Wave & Current Data Collection



- **Current Gauges**
 - 3 Acoustic Doppler Velocimeters (ADV)
 - 2 Acoustic Doppler Current Profilers (ADCP)
- **Wave Gauges**
 - 1 UH Datawell Directional Wave Buoy
 - 2 ADCPs and 3 ADVs
- **Drogues (4)**
 - Self Recording GPS Track Lines
 - Line-of-site Location Transmitting

Mokapu Point

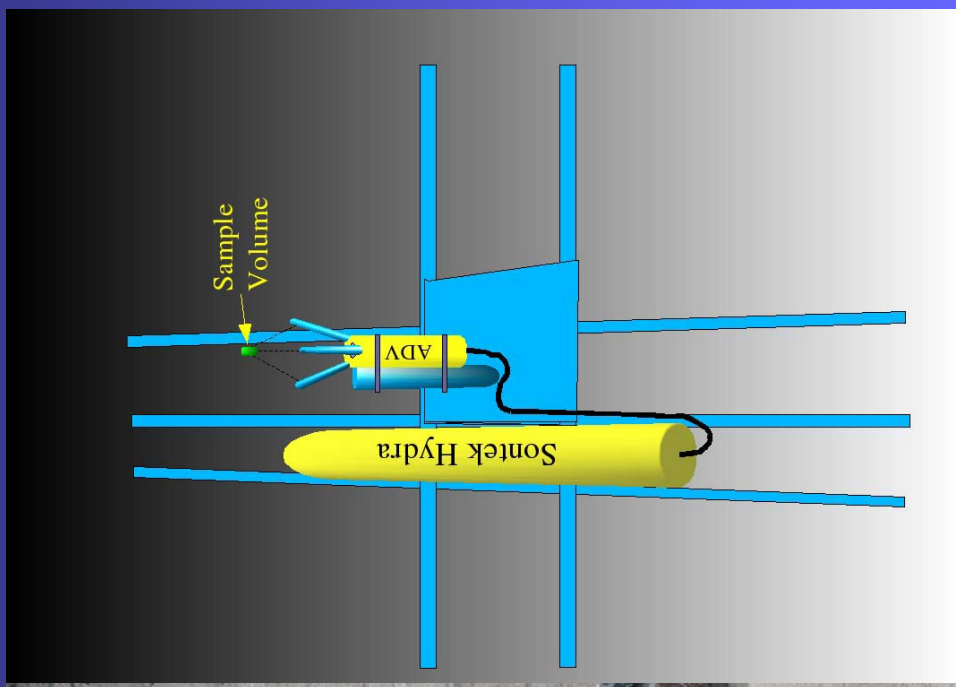
Gage Deployment Locations



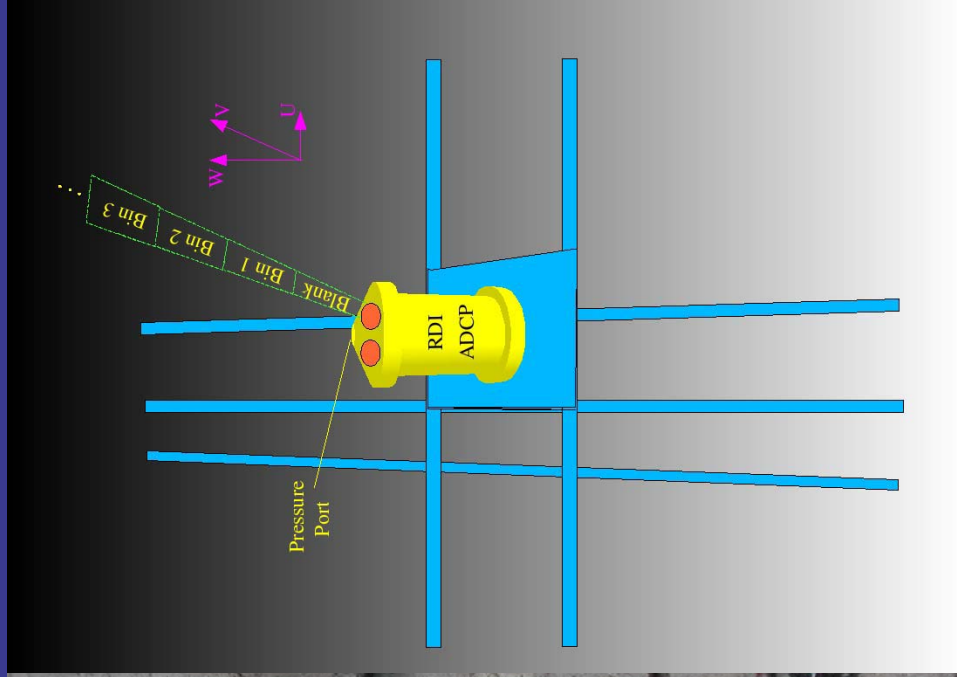
**Table 1. Instrument Identification and Location
Hawaii RSM Gage Locations, August - September 2005**

Gage		Lat (deg min)	Lon (deg min)	Recording Time Period		Nominal	
Type	Name			Start	End	Depth (m)	
ADCP	ADCP1	21 23.905	157 42.994	9 August - 14 September		3.3	
ADCP	ADCP2	21 20.318	157 40.786	10 August - 4 September		6.6	
ADV	Y1	21 23.861	157.43.079	9 August - 14 September		2.5	
ADV	G2	21 22.509	157 42.233	9 August - 14 September		2.7	
ADV	R3	21 19.795	157 40.930	9 August - 14 September		2.5	

Acoustic Doppler Velocimeter



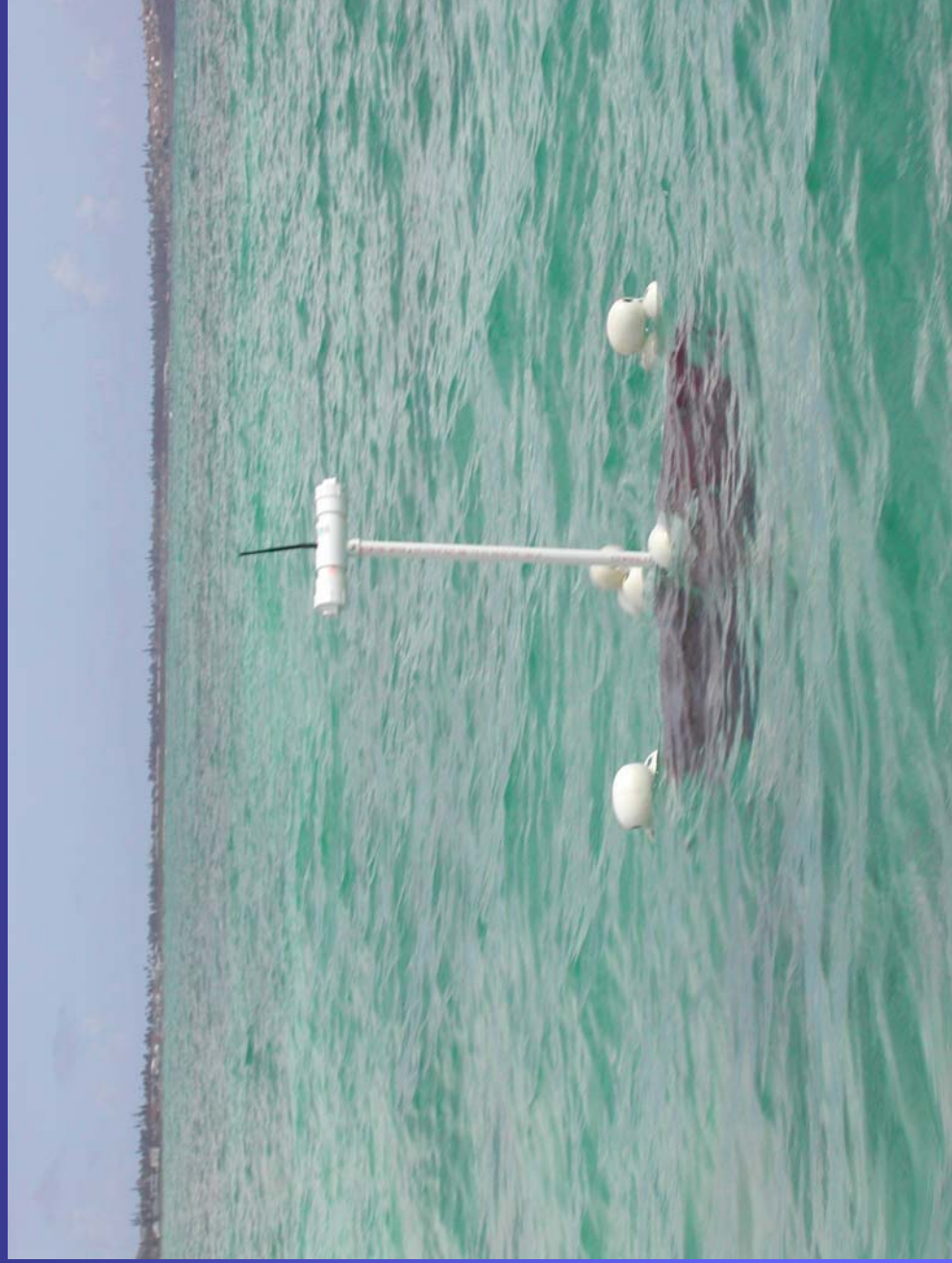
Acoustic Doppler Current Profiler



Field Deployment Drogues



Field Deployment Drogues





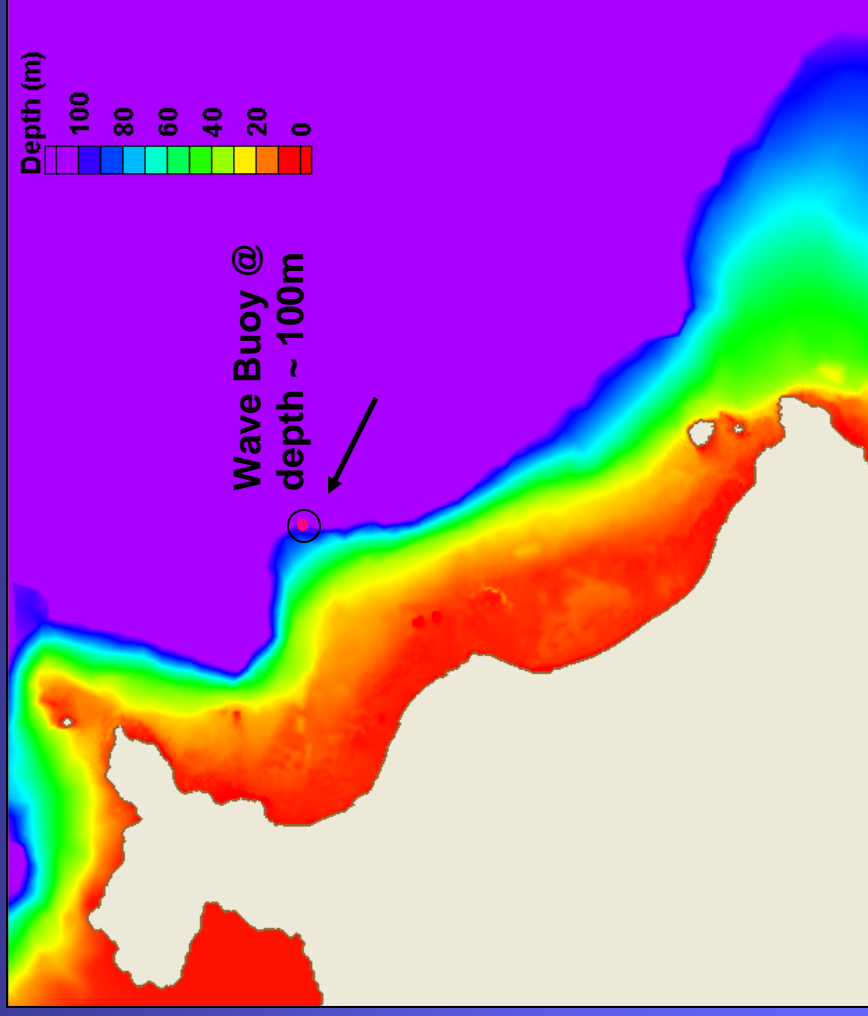
Offshore Wave Buoy



Directional Wave Data:

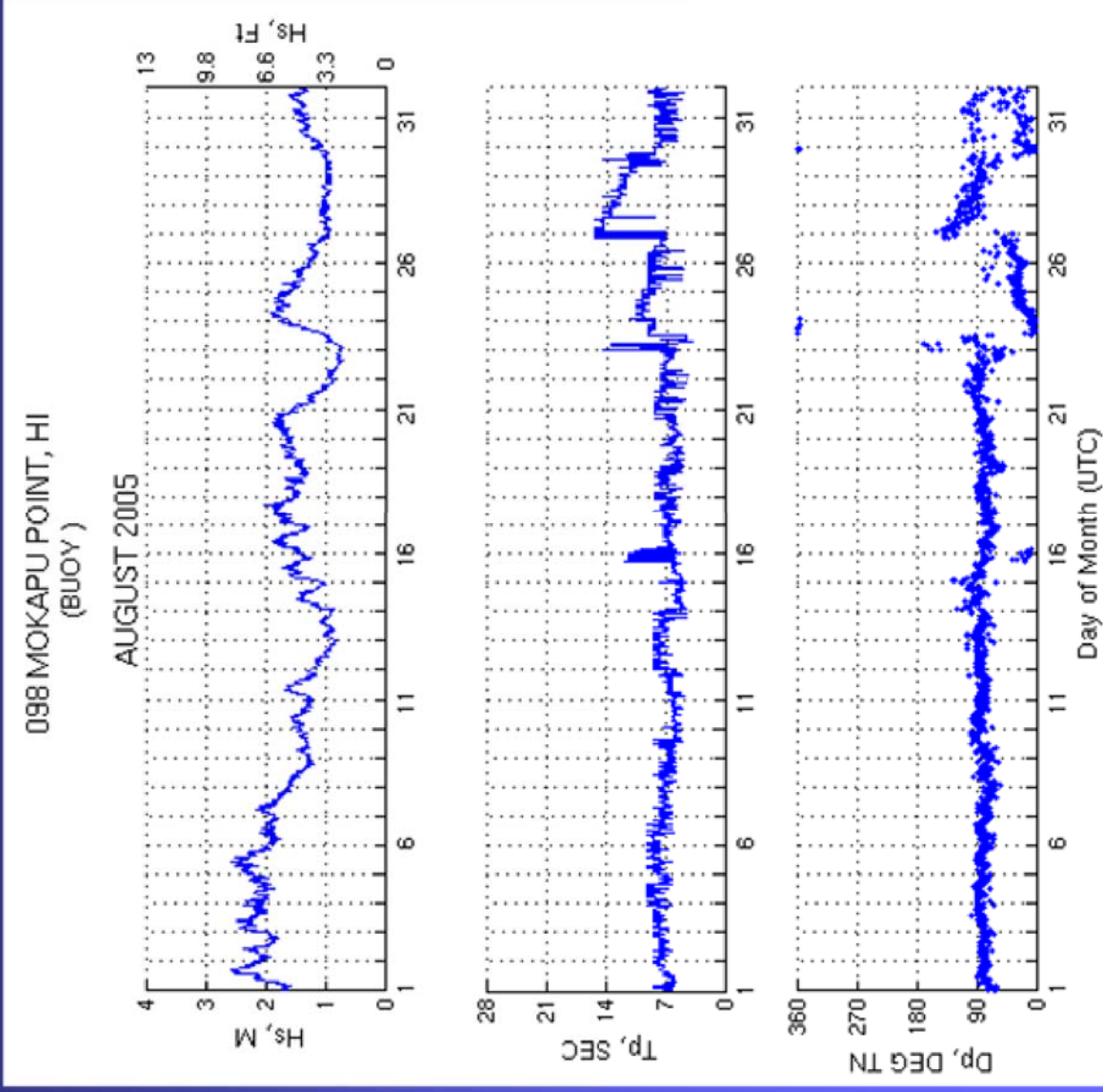
UH/CDIP Station 098 (Mokapu Point) :

- Measures wave height and wave direction
- Available from August 2000 to present
- Directional spectra is used as input into the offshore boundary of the STWAVE grid



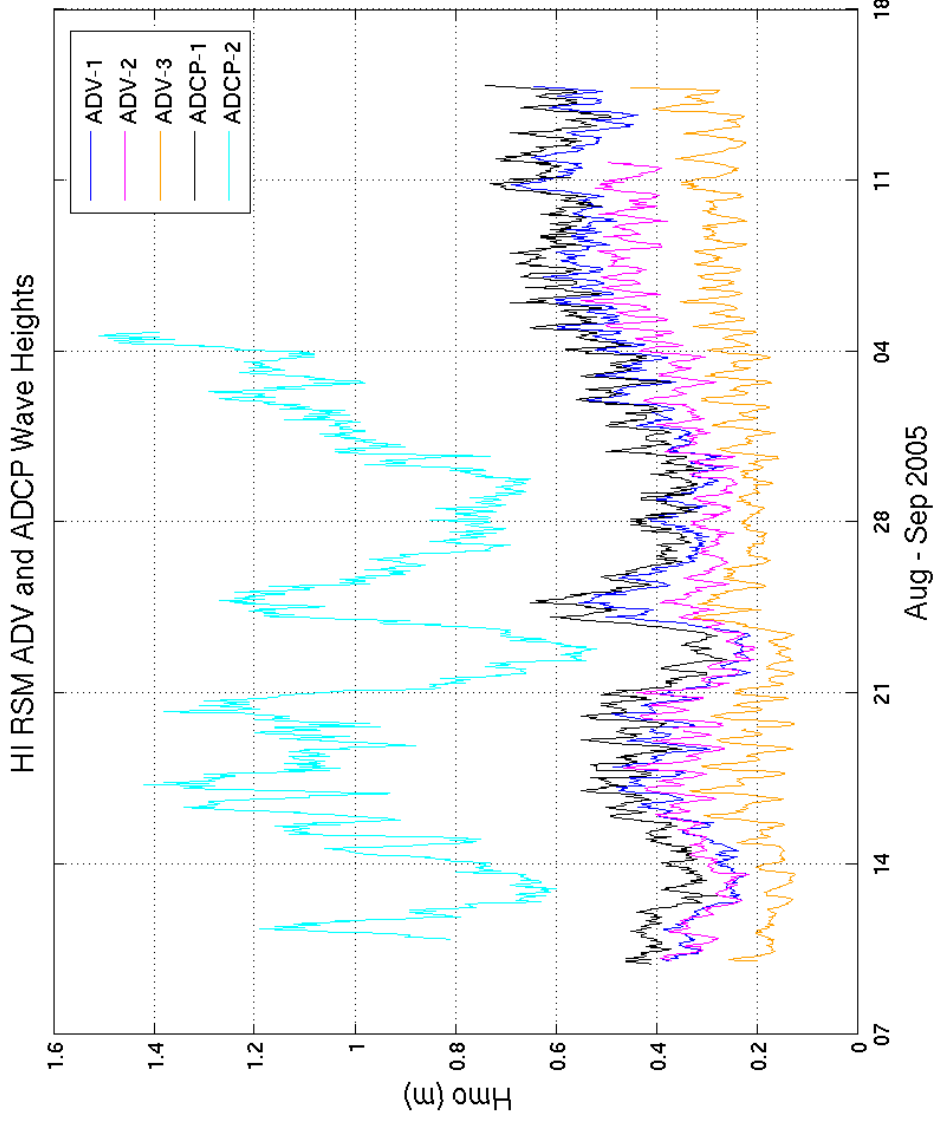
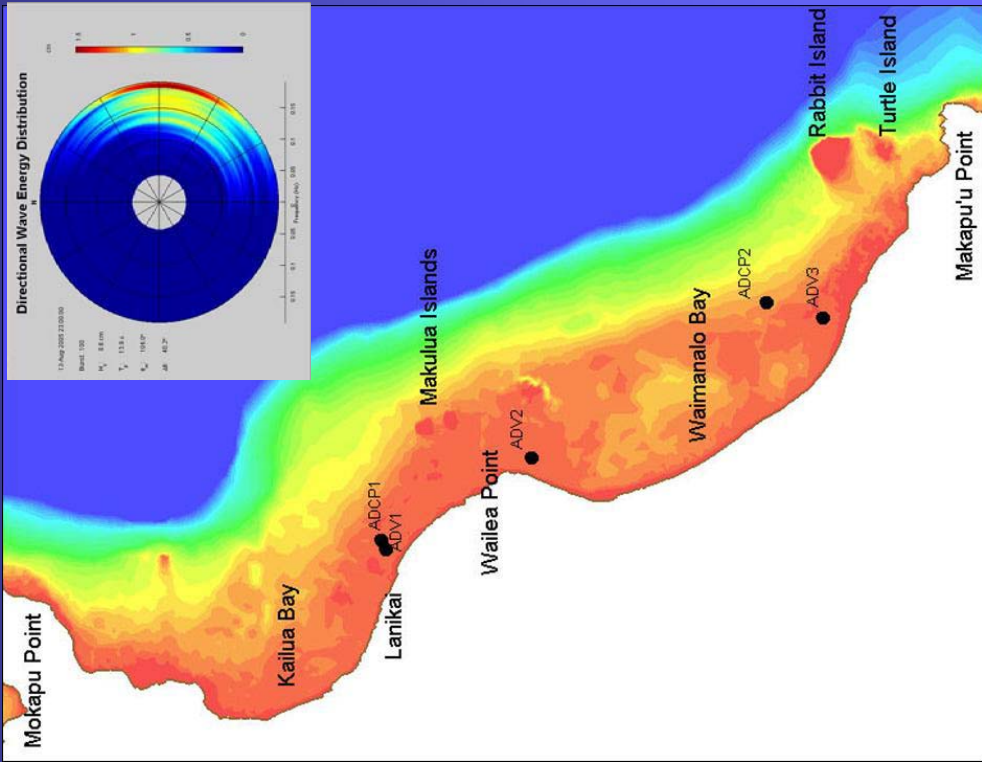


Offshore Wave Conditions



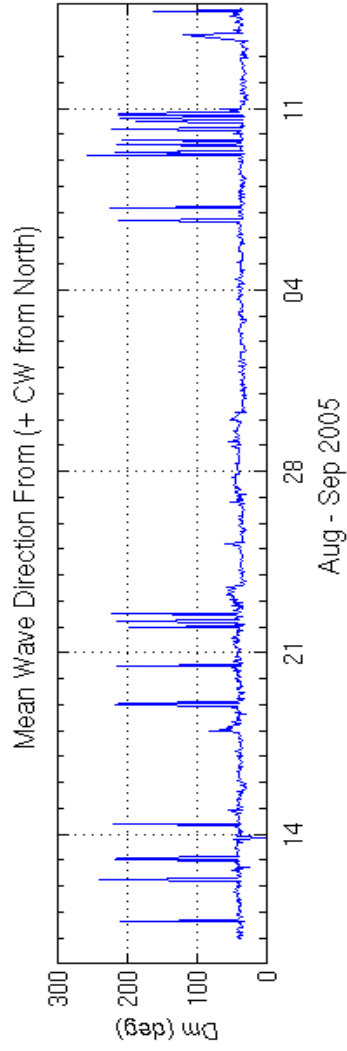
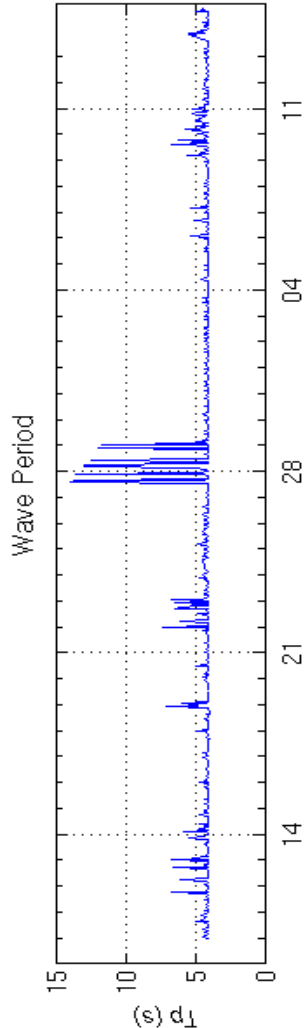
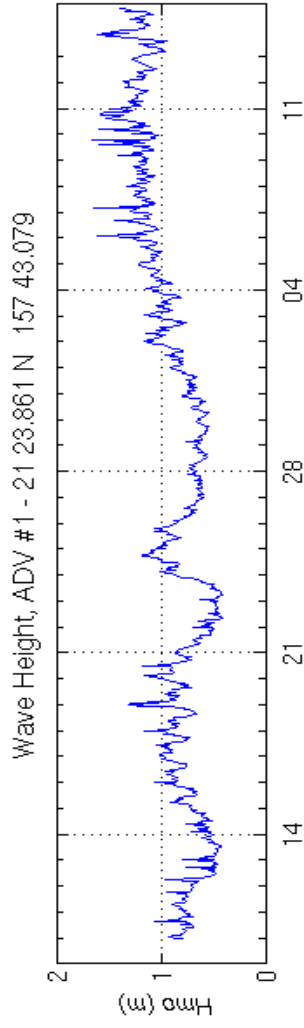
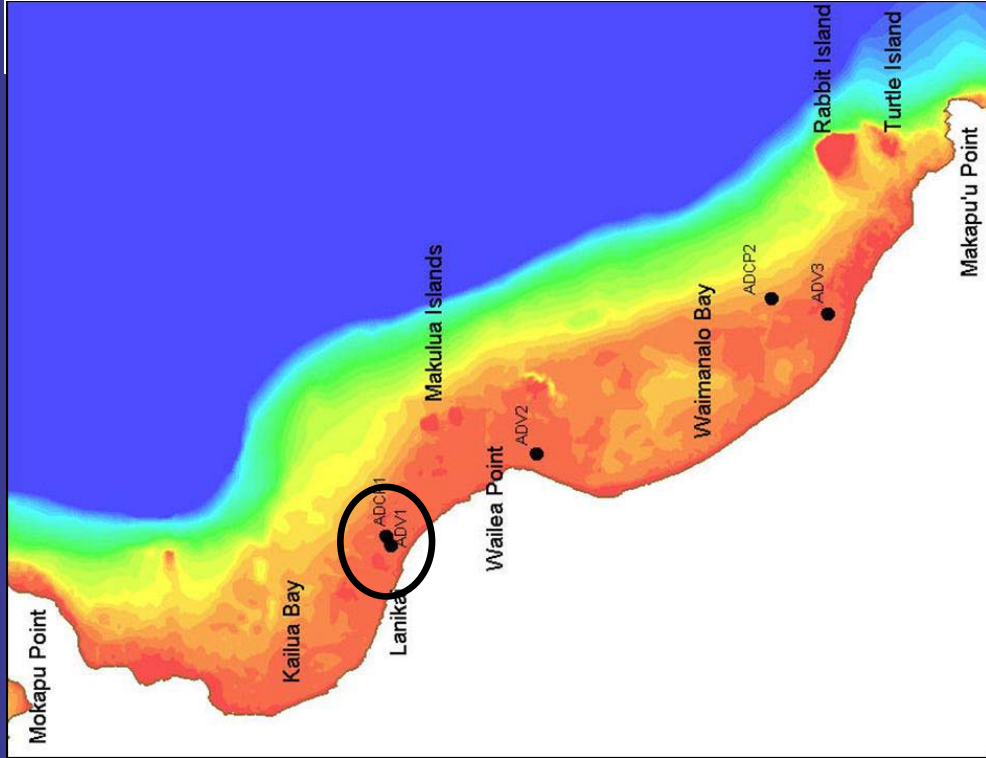


Field Data Collection Waves





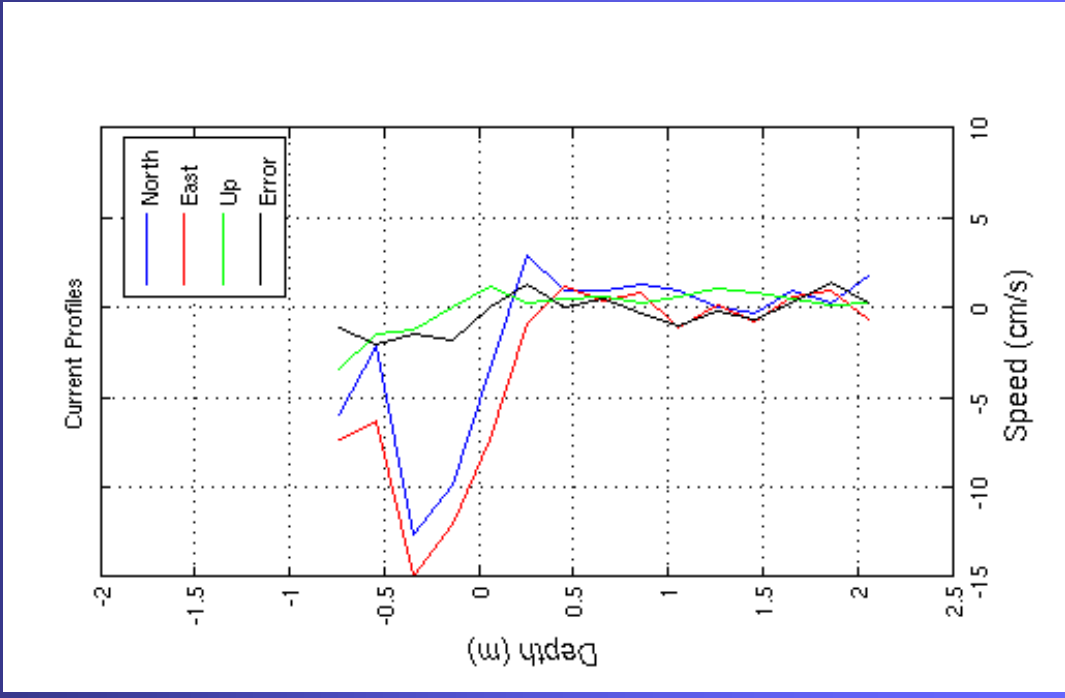
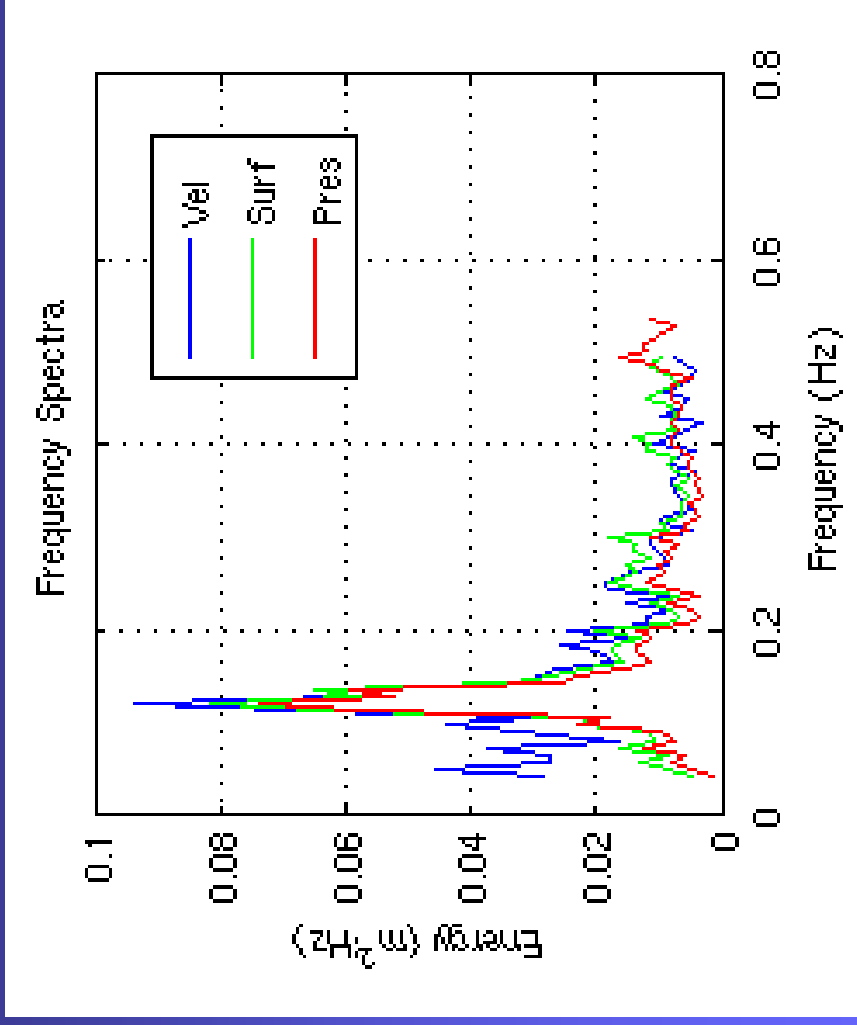
Field Data Collection Waves



Aug - Sep 2005



Field Data Collection Wave Spectra & Current Profiles





Field Deployment Drogue Tracks

