



Ka'elepulu Stream



27 Aug 2008

Ka'elepulu Stream RSM



Recent Shoreline Change



27 Aug



Sand Grabbers

August 2006 to August 2008





Boat Ramp Erosion

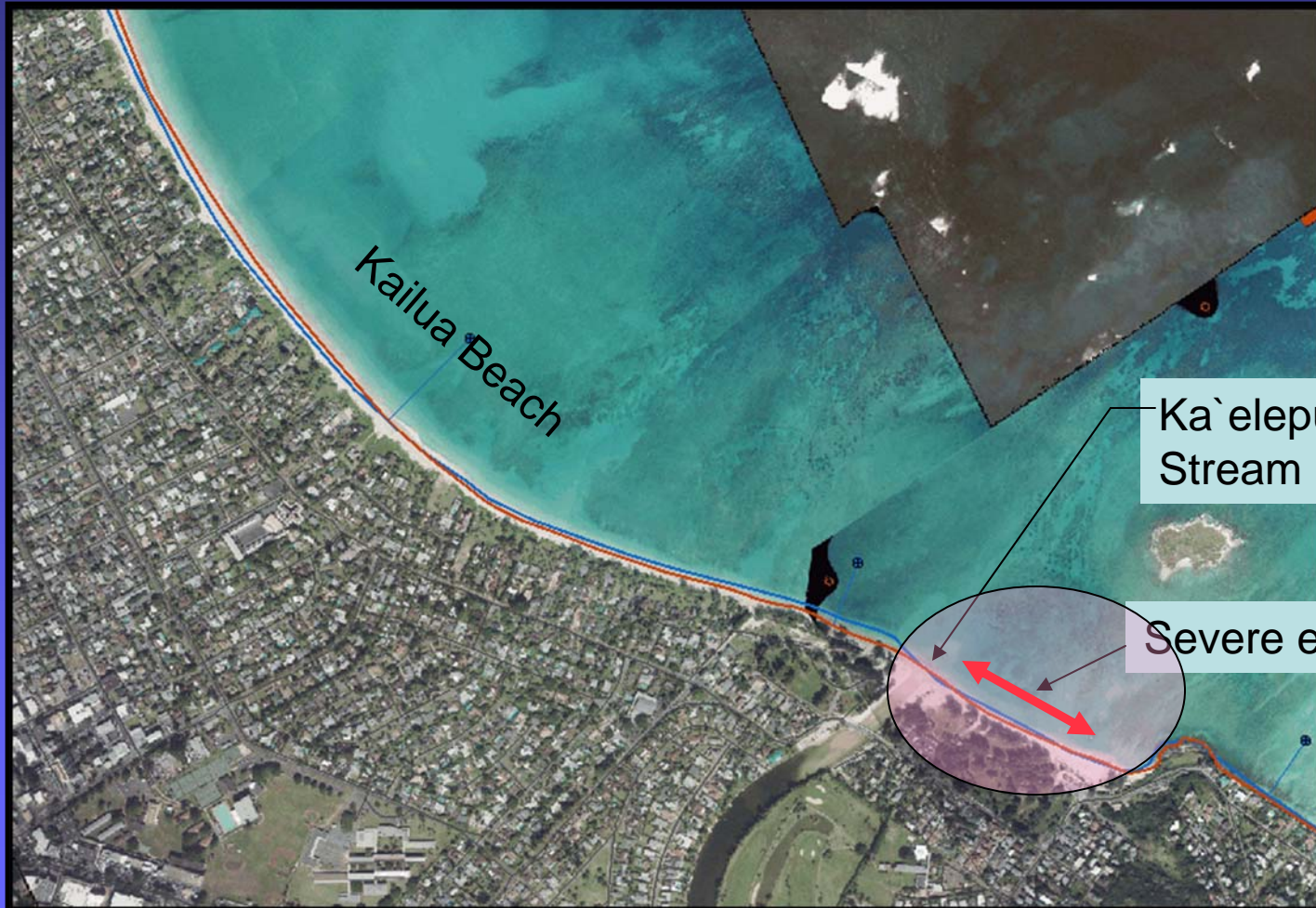


27 Aug 2008

Ka`elepulu Stream RSM



Vicinity Map





Bank Erosion



27 Aug 2008

Ka`elepulu Stream RSM



Accretion



Erosion

- Erosion accelerating
- Accretion slowing
- Accretion becoming erosion

Short term 1980's to present



Local processes

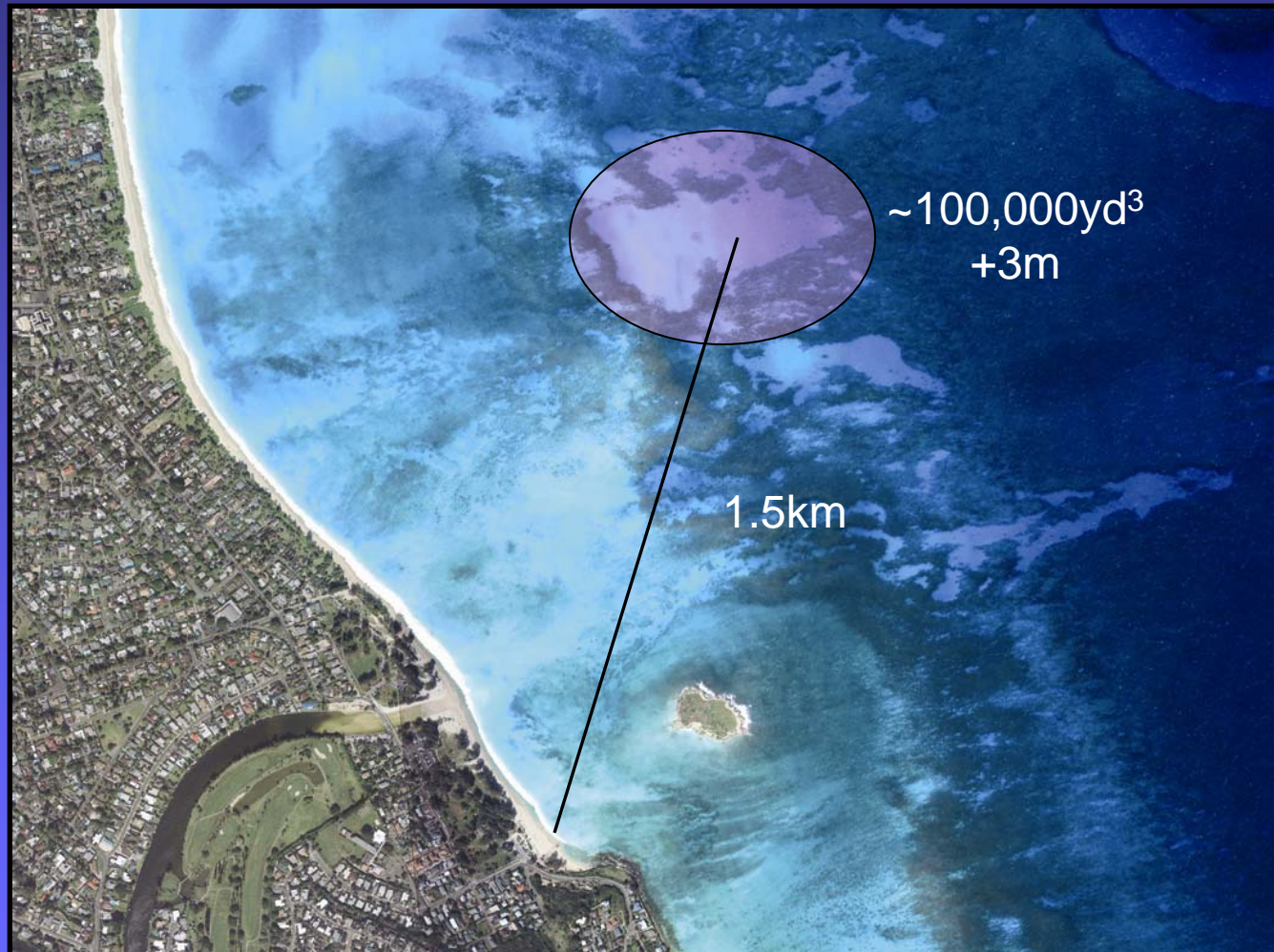


Net loss
•Channel storage
•Bank storage

Ideally, a major run-off event would blow this sand back into the system



Nourishment



27 Aug 2008

Ka`elepulu Stream RSM



Back-passing





Remove sand-grabbers



•Will parking lot be threatened?



Ka`elepulu Stream Questions



- **Can routine sand management be improved?**
 - What is the current practice?
 - Can canal sand be routinely placed at boat ramp?
- **Should sand grabbers be removed?**
 - Will parking lot be threatened?
 - What is plan if parking lot is threatened?
- **Is offshore nourishment a viable option?**
 - Logistics appear viable, cost ~\$2m.
- **Is major back-passing effort a viable option?**
 - Pollutants and fines?
 - Permitting?
- **Other ideas?**



How do we move forward?



27 Aug 2008

Ka`elepulu Stream RSM

13



THANK YOU