

SUNSET BEACH RSM COASTAL MODELING

Jessica Podoski
Honolulu District



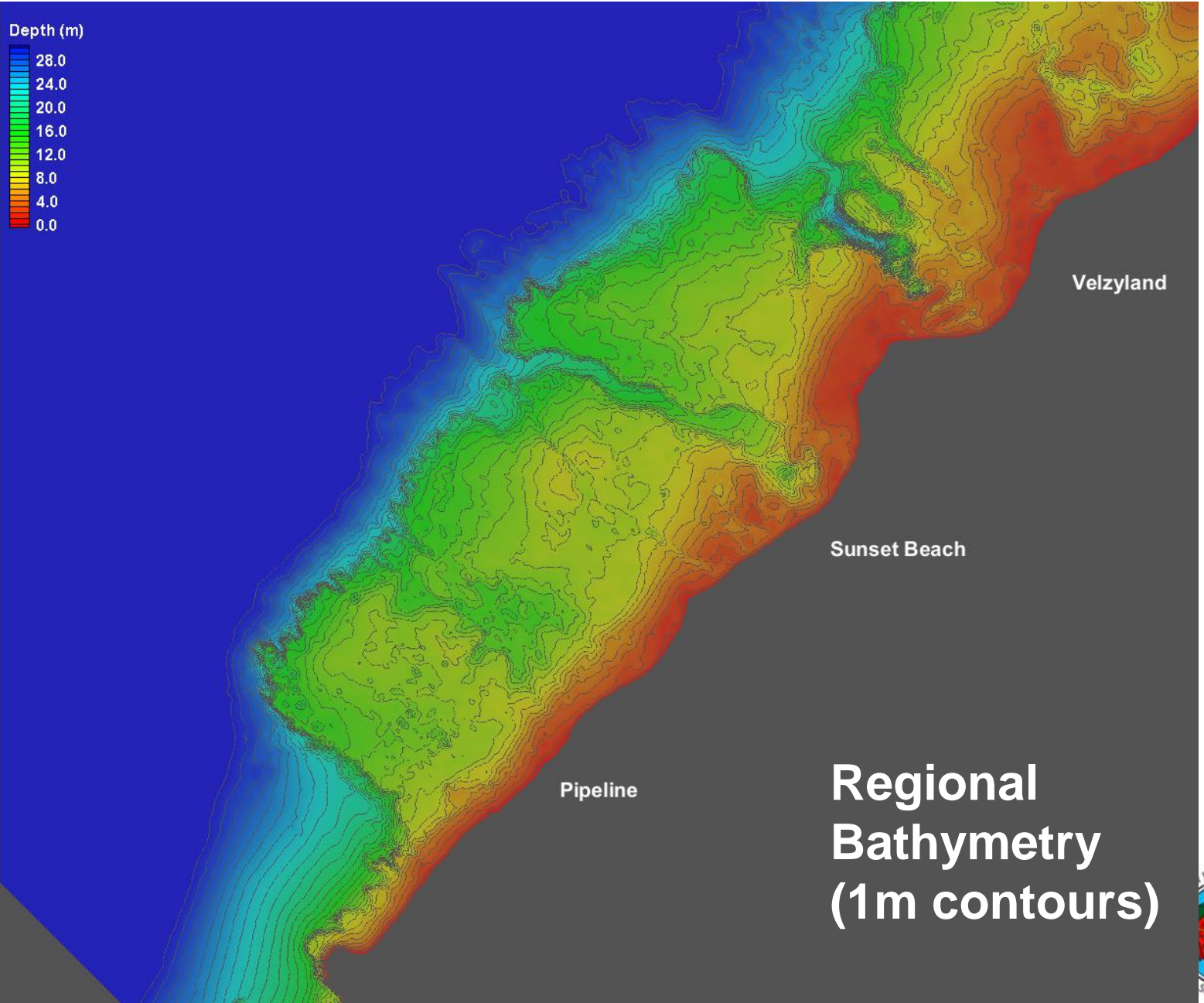
OVERVIEW

- REGIONAL BATHYMETRY
- WAVE CLIMATE
- WAVE AND CIRCULATION MODELING
 - January 2015 Swell Condition
 - April 2015 Tradewind Condition



US Army Corps
of Engineers®

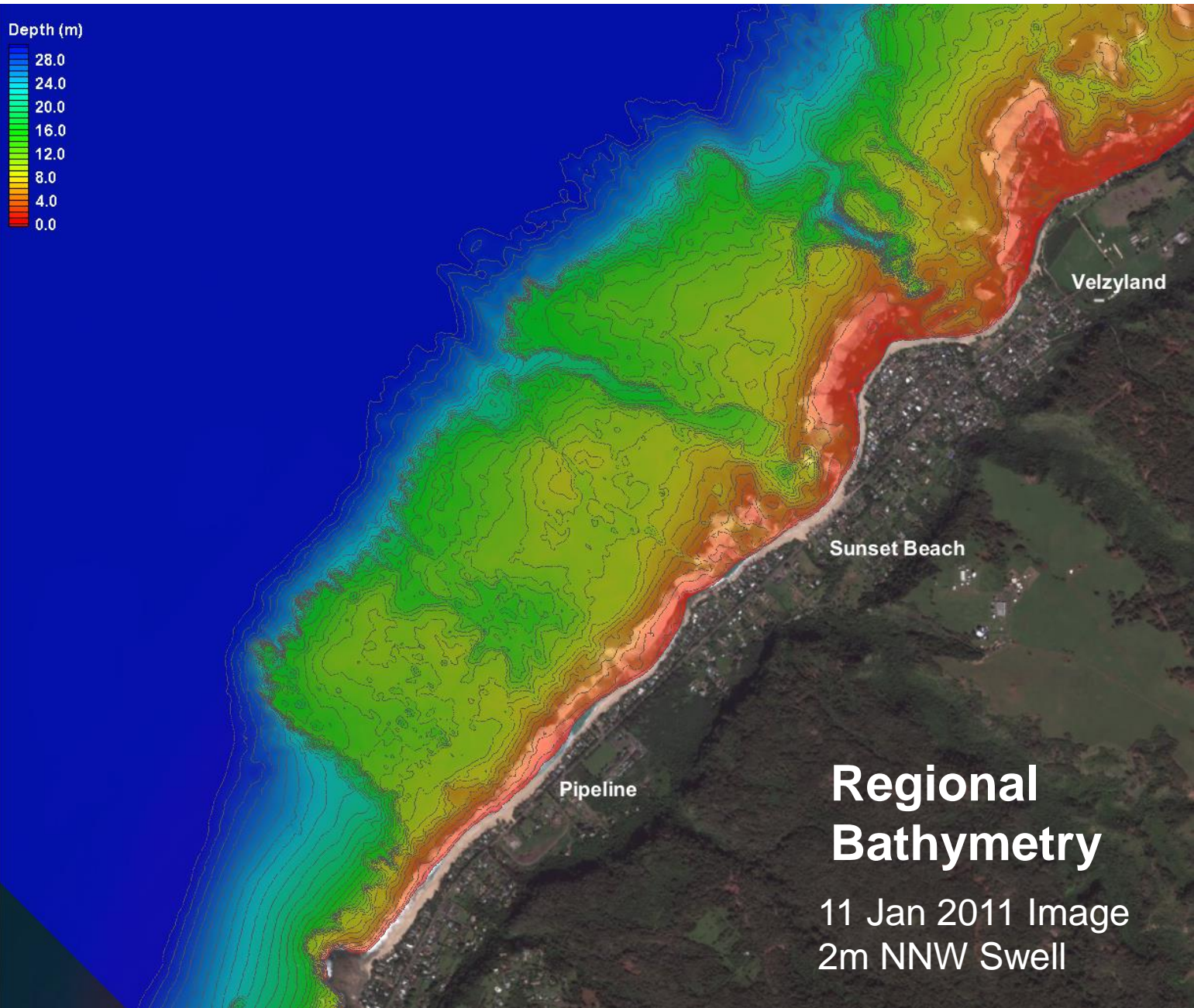




US Army
of Engineers

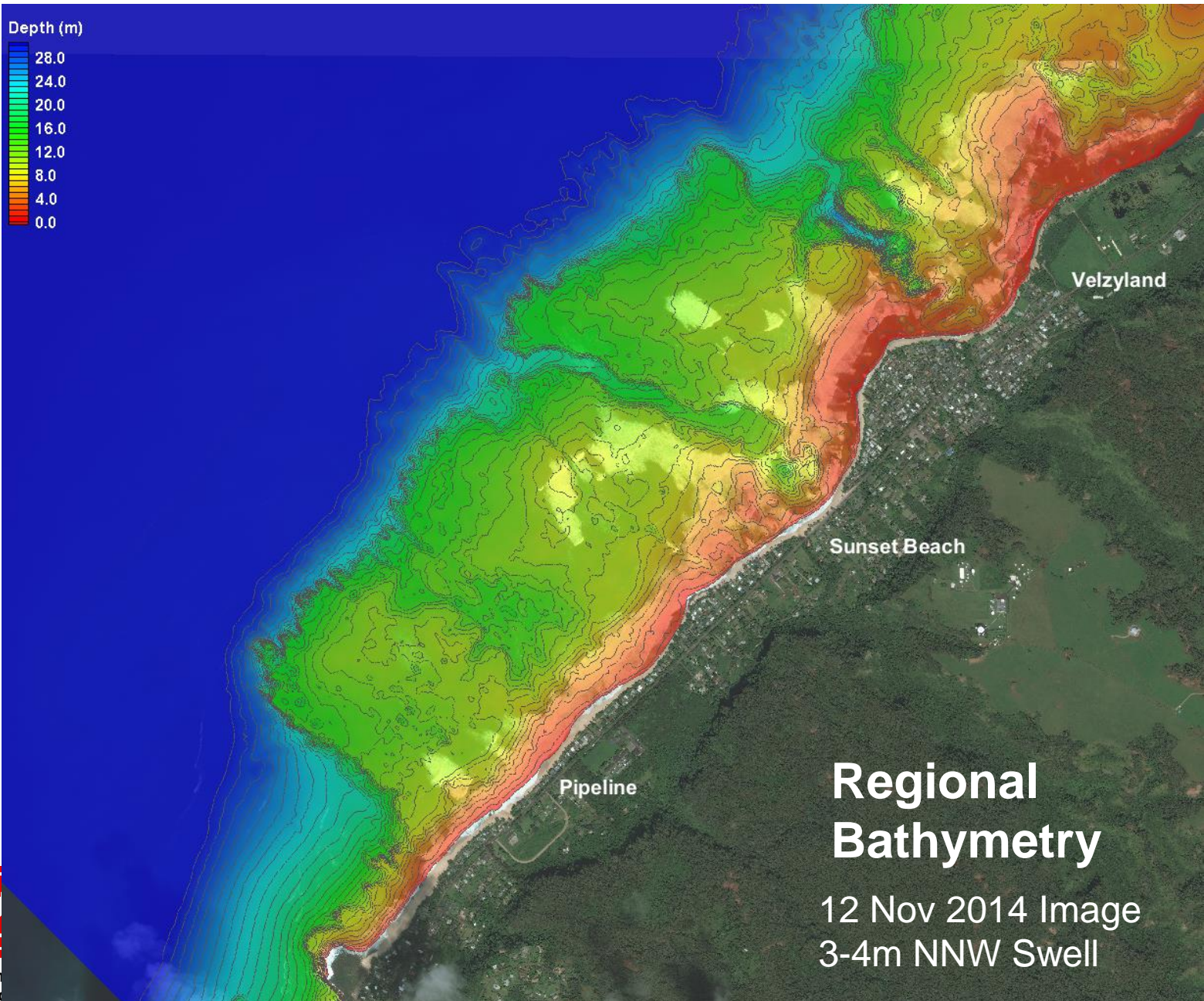


State of Hawaii



US Army
of Eng





WAVE CLIMATE



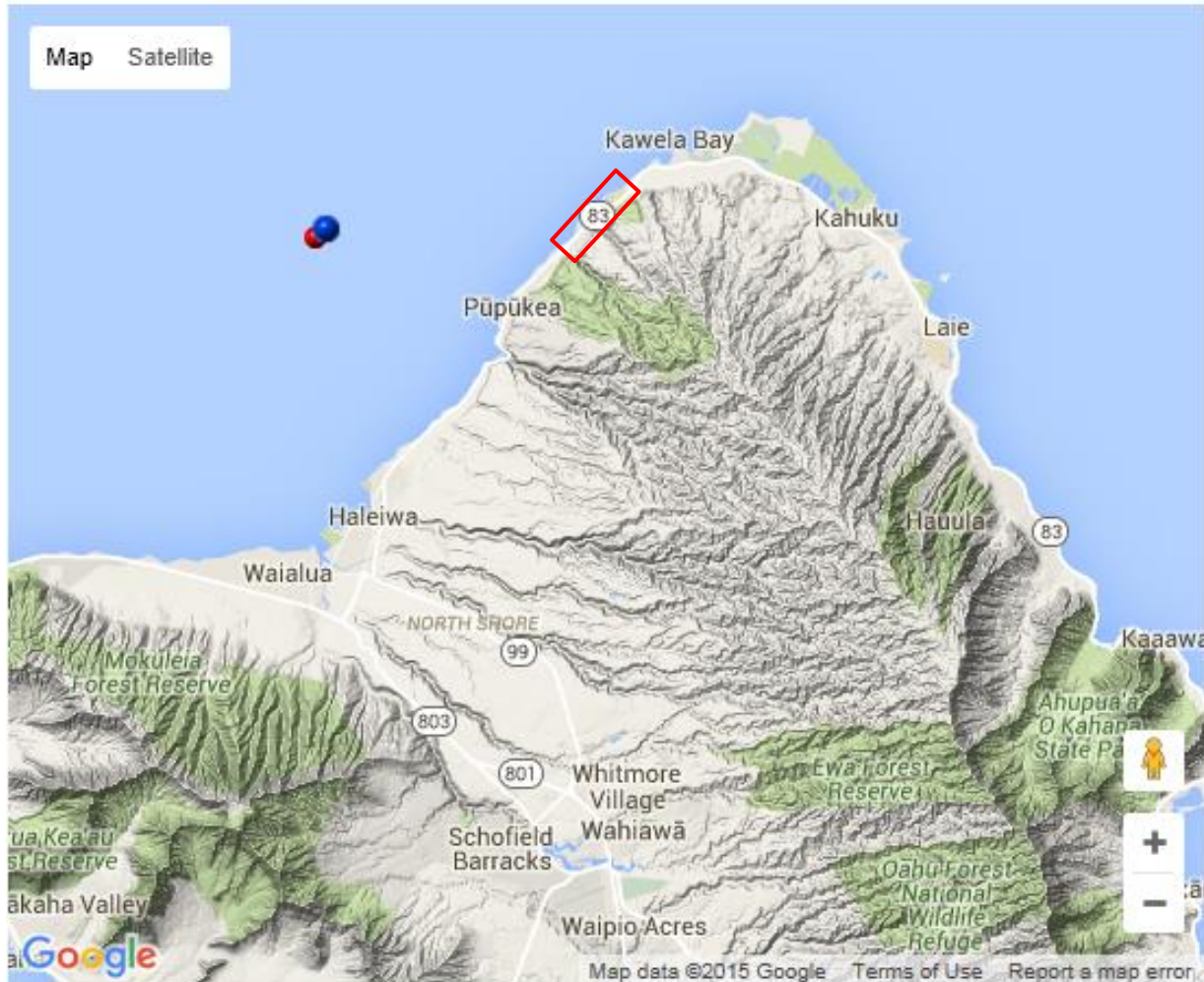
The Coastal Data Information Program
Integrative Oceanography Division



DBW USACE

Themes Recent **Historic** Documents Station ID search

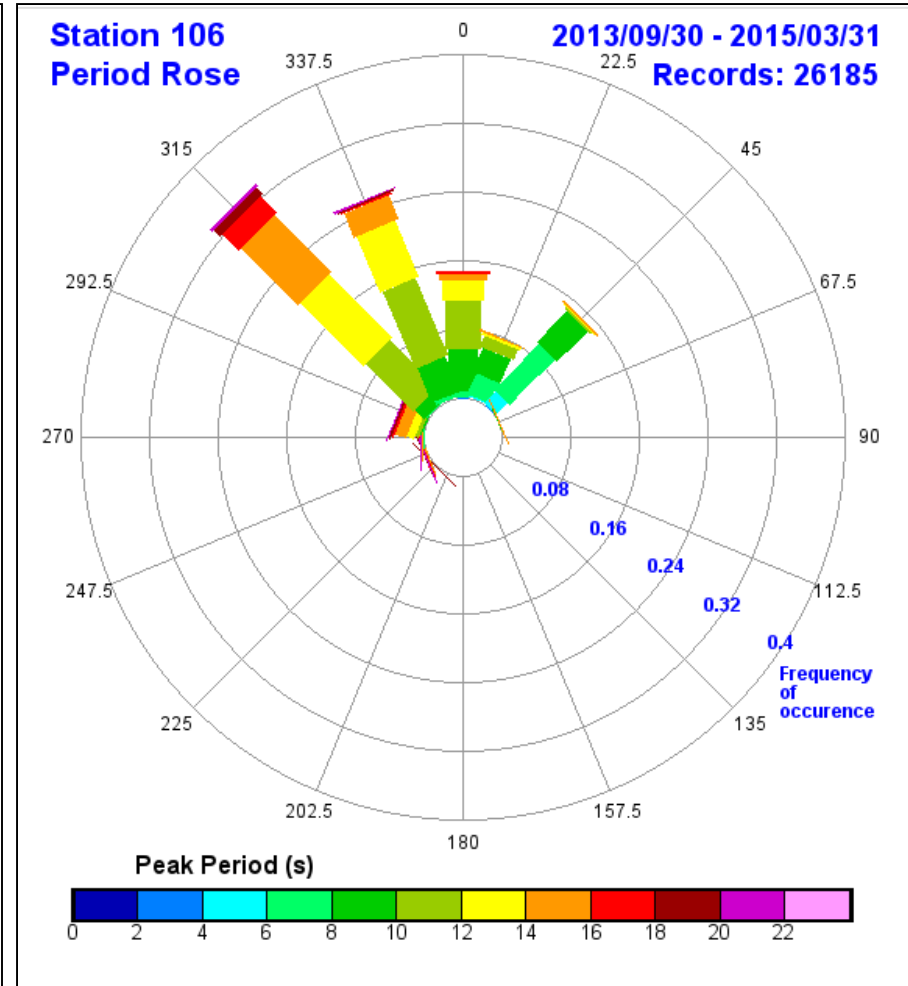
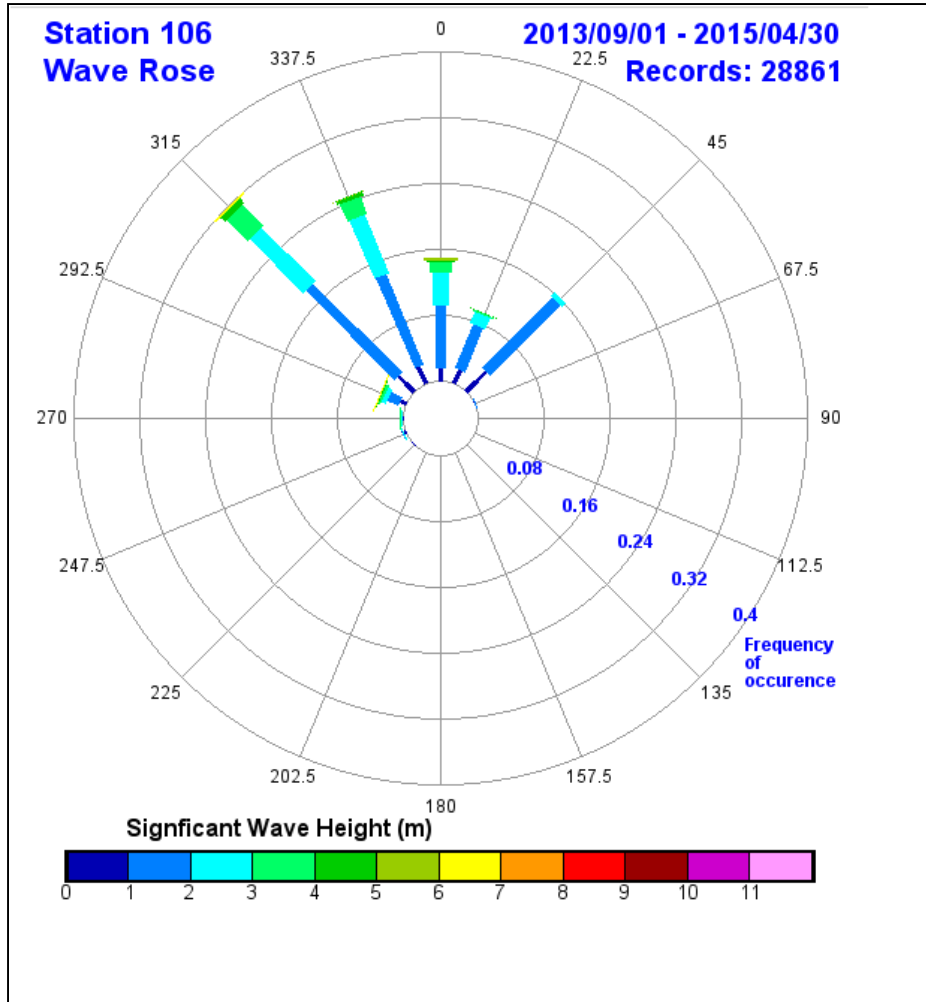
news | contact us | home [data](#) | [directory](#) | [map](#)



US Army Corps
of Engineers®



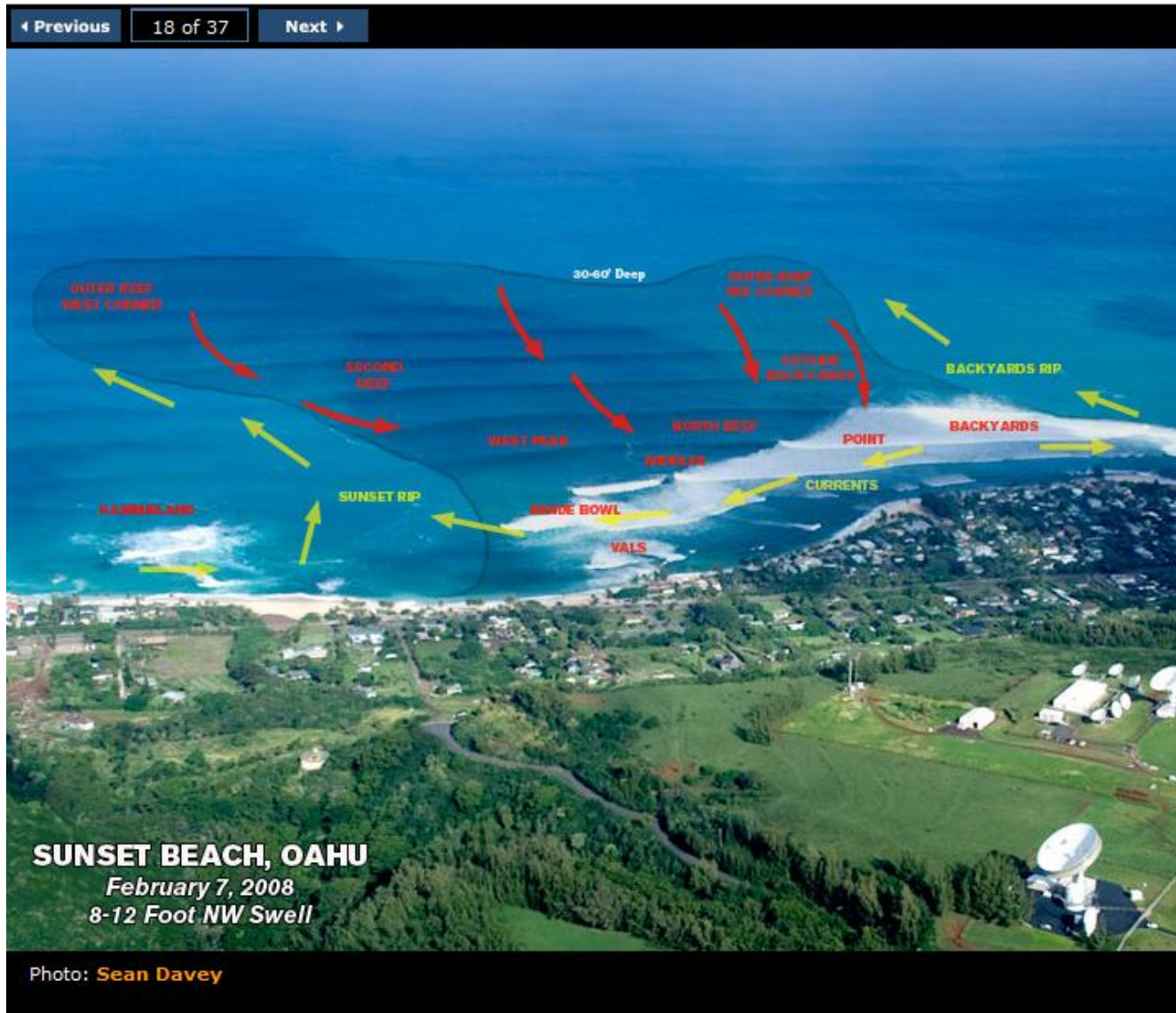
WAVE CLIMATE



US Army Corps
of Engineers®



WAVE CLIMATE

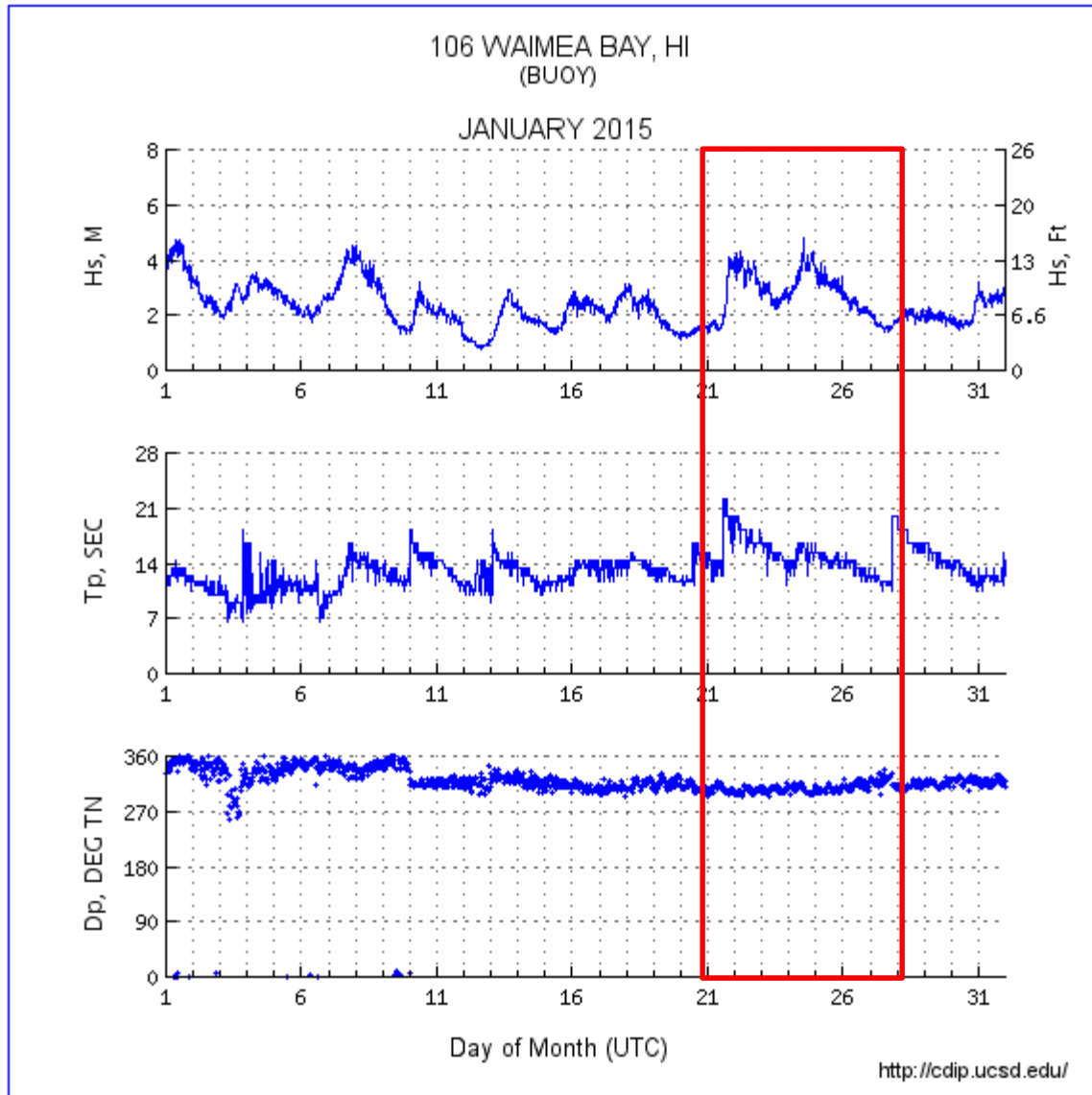


US Army Corps
of Engineers®

Surflin.com – Mechanics of Sunset



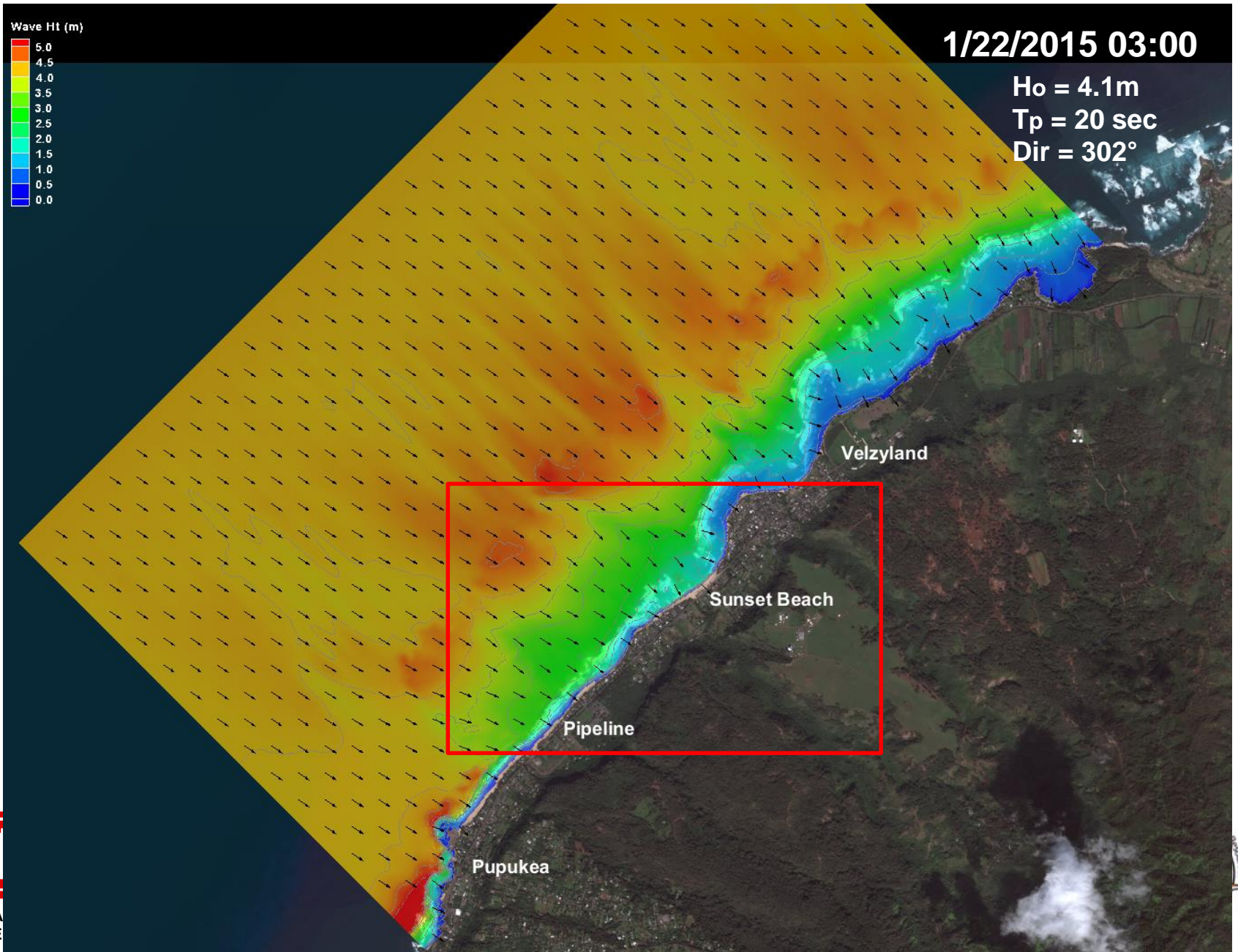
January 2015 NW Swell: Wave Buoy Data



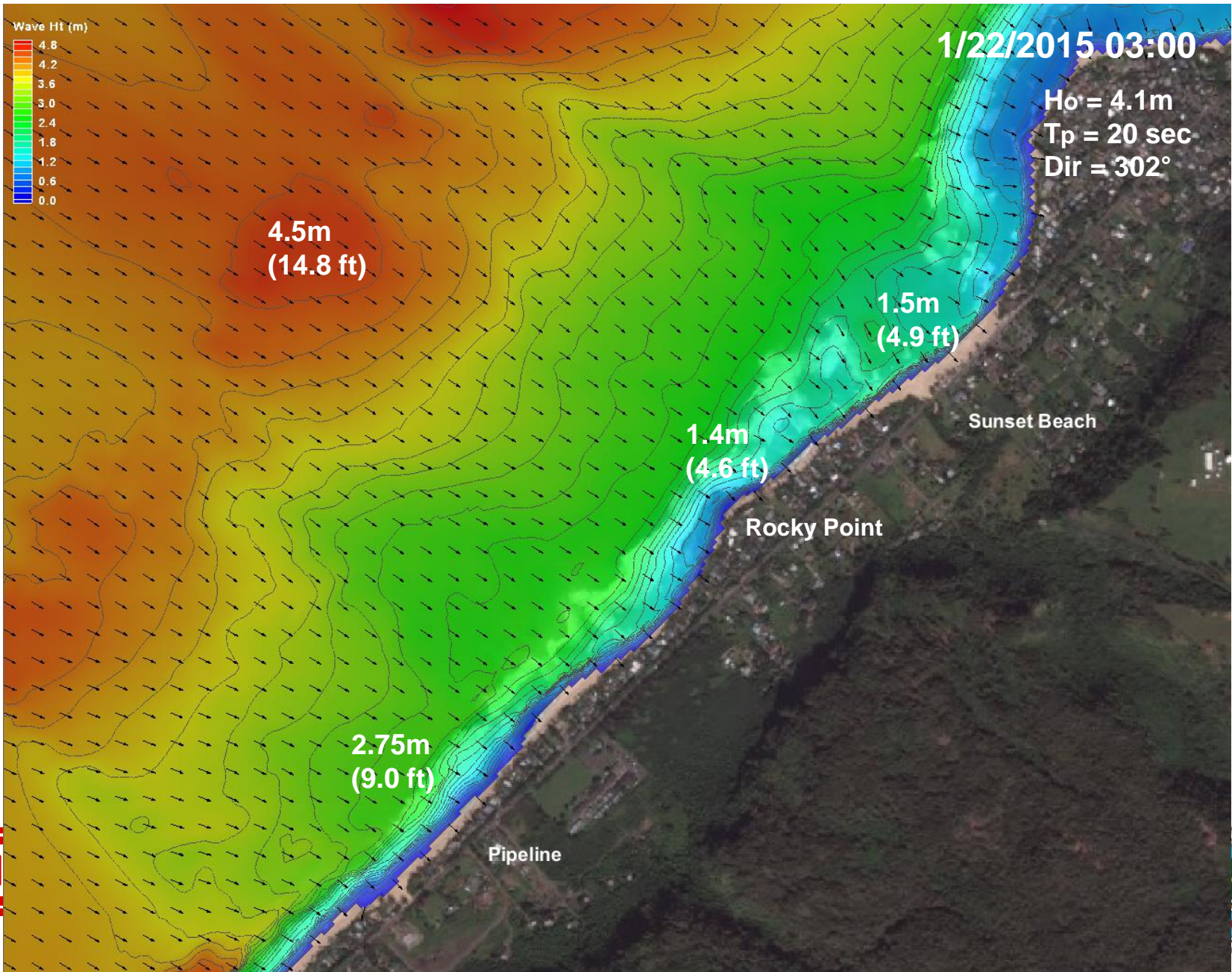
US Army Corps
of Engineers®



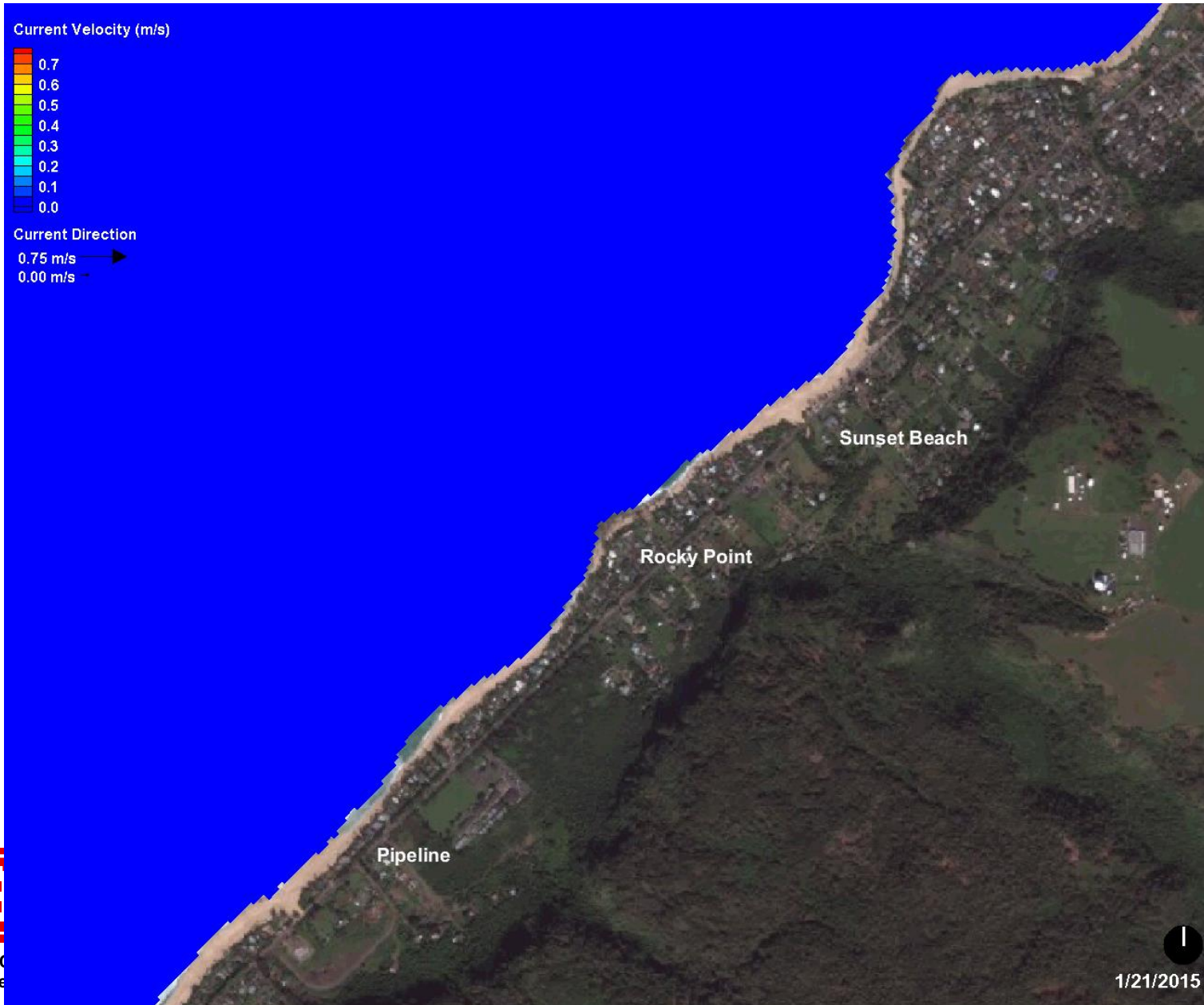
January 2015 NW Swell: Wave Model Snapshot



January 2015 NW Swell: Wave Model Snapshot (Area of Interest)



January 2015 NW Swell: Circulation Video



US Army Corps of Engineers



1/21/2015

January 2015 NW Swell: Flow Trace Video

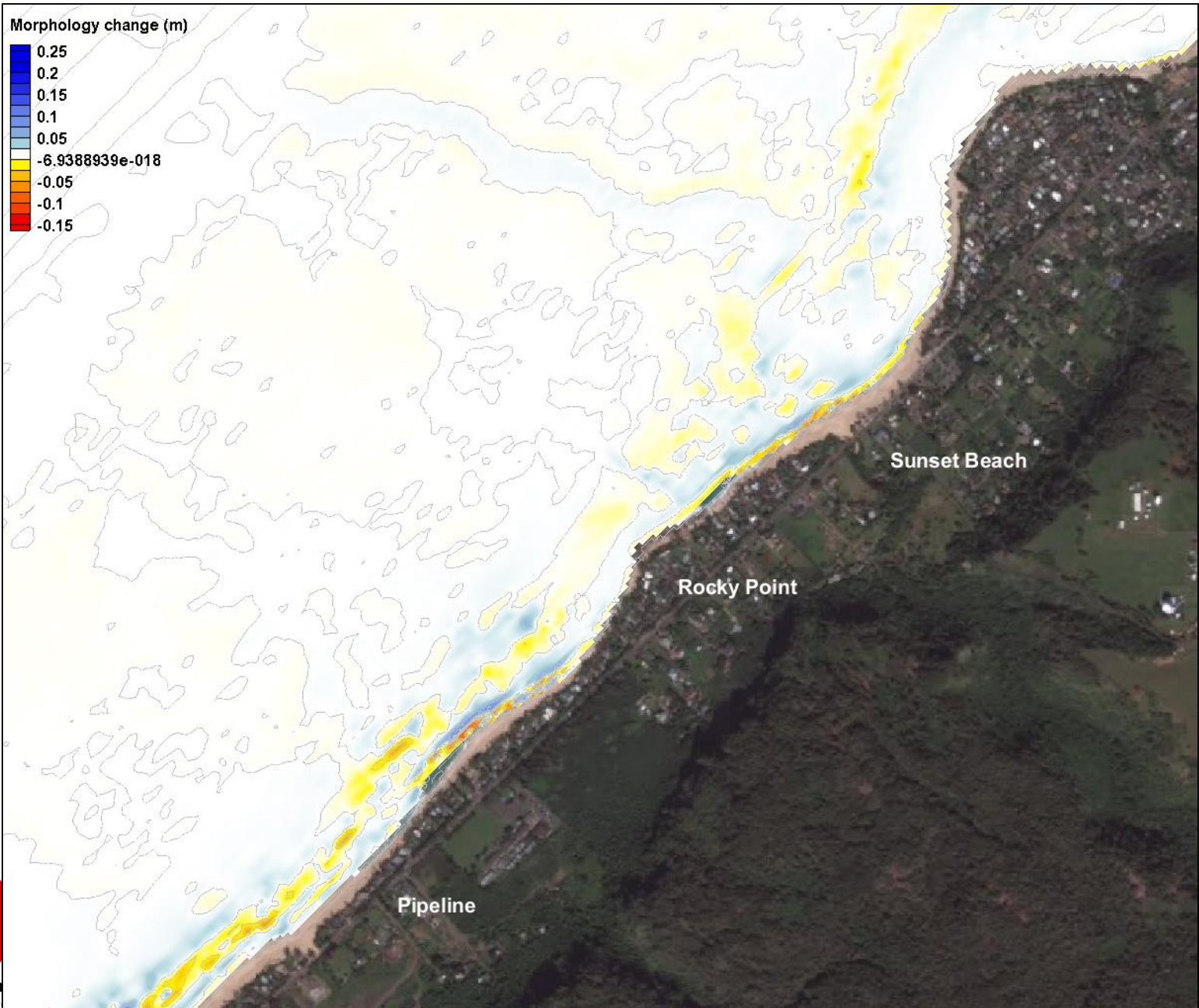


US Army
of Engin



1/21/2015

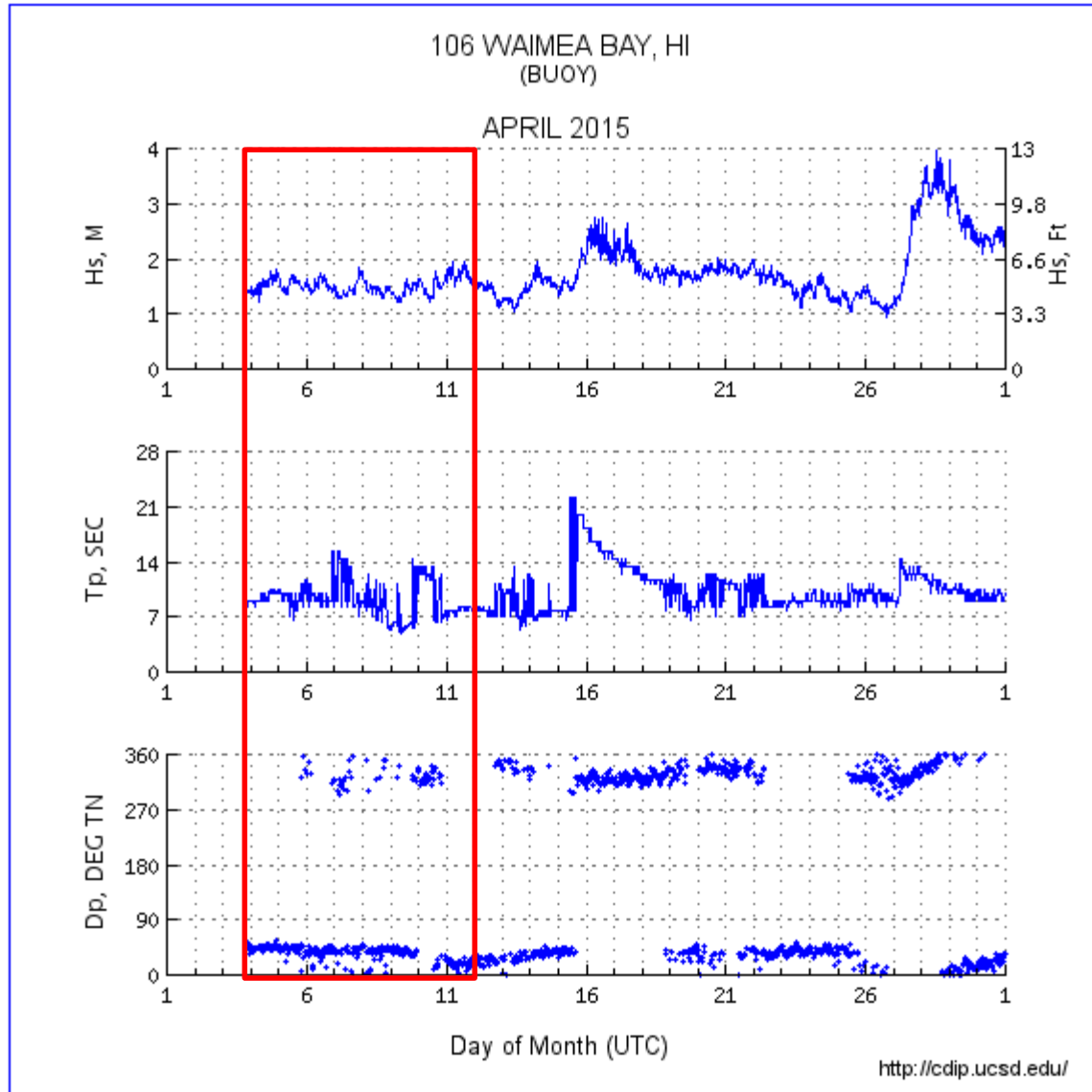
January 2015 NW Swell: Morphology Change



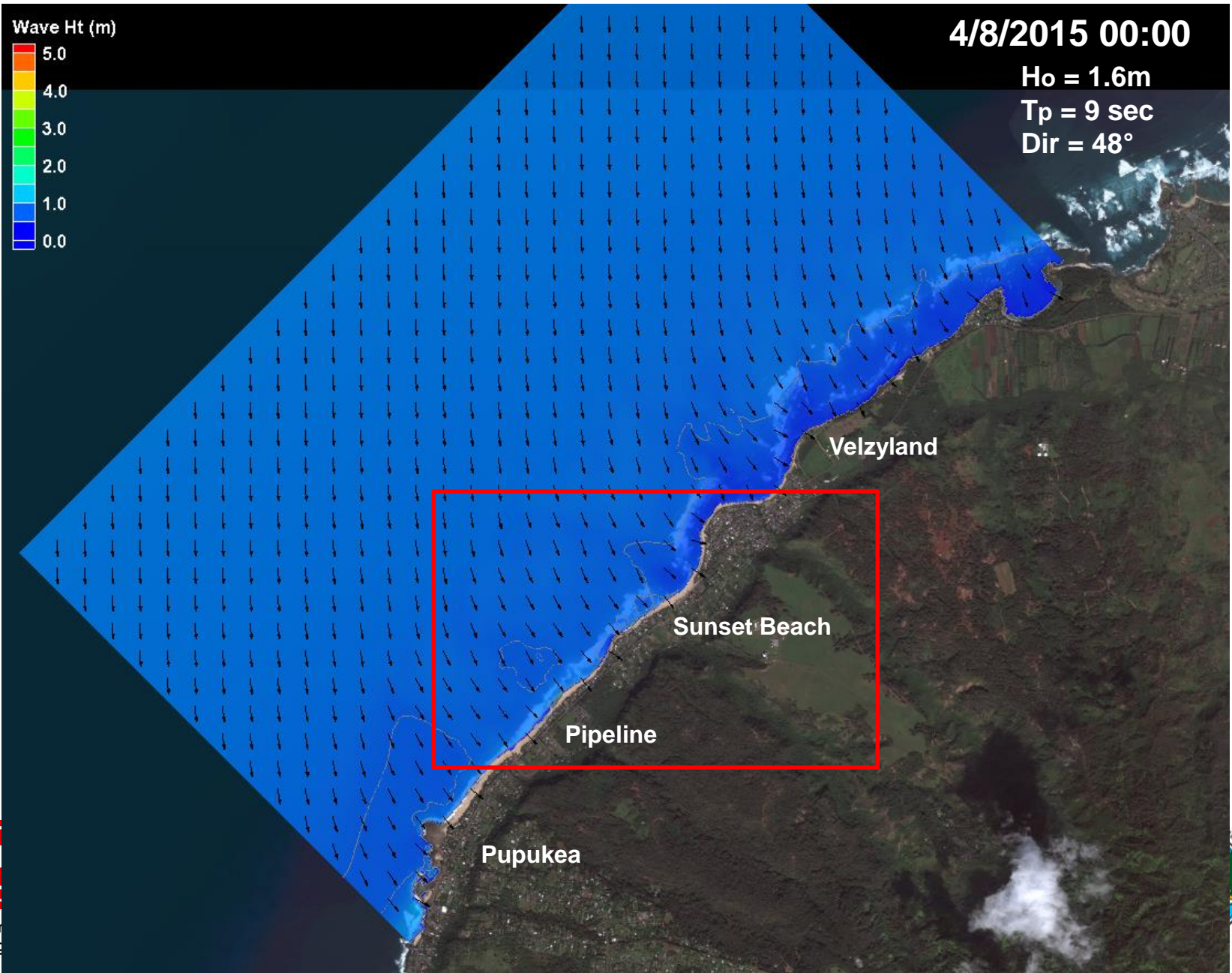
US Army Corps of Engineers



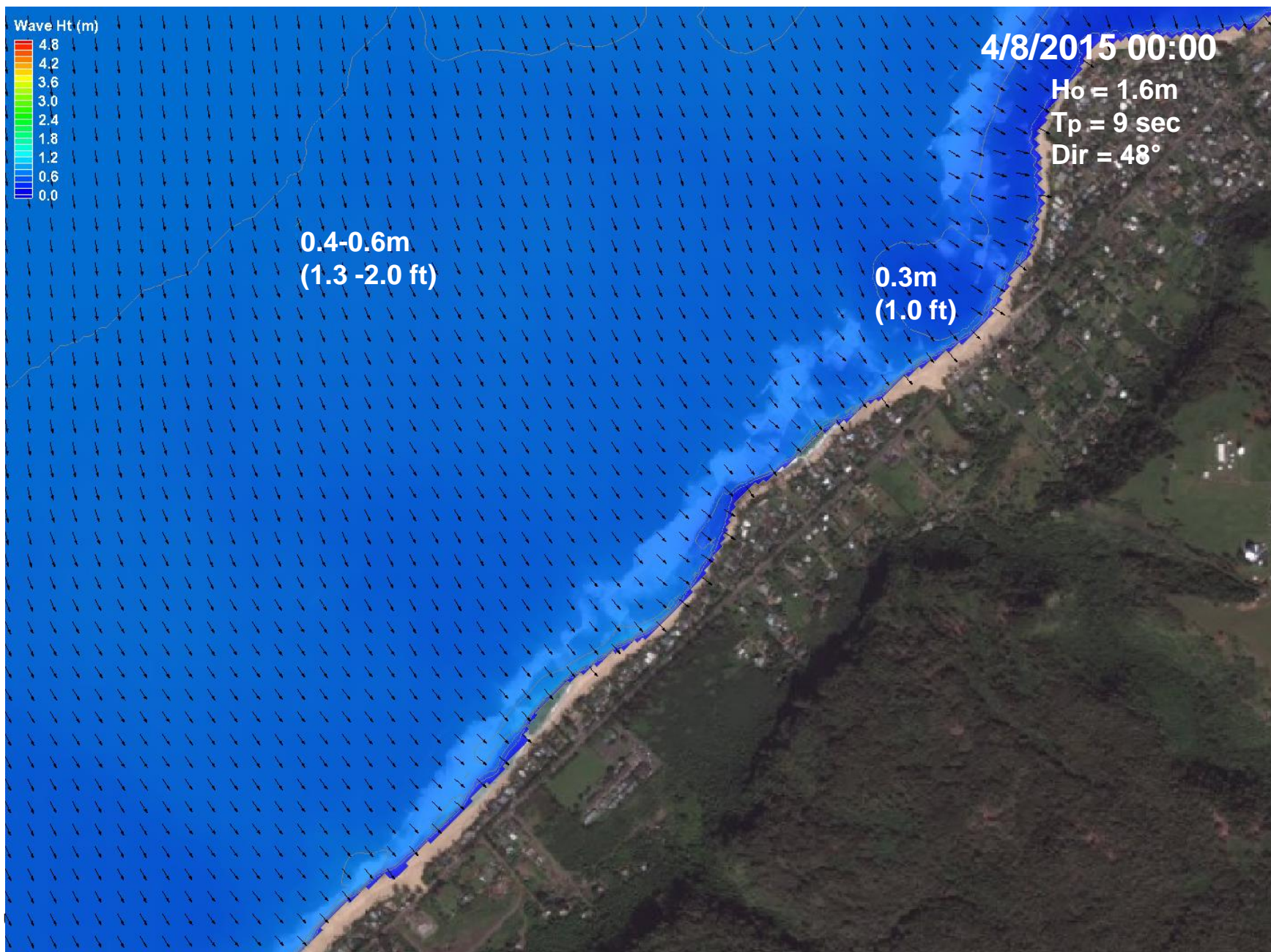
April 2015 Tradewind Conditions: Wave Buoy Data



April 2015 Tradewind Conditions : Wave Model Snapshot



April 2015 Tradewind Conditions : Wave Model Snapshot (Area of Interest)



April 2015 Tradewind Conditions : Circulation Video



April 2015 Tradewind Conditions : Flow Trace Video



QUESTIONS?



US Army Corps
of Engineers®

