

HAWAII

REGIONAL SEDIMENT MANAGEMENT

West Maui RSM Workshop August 27, 2014

Sanctuary Learning Center
Kihei, HI



US Army Corps
of Engineers®



co-sponsored by:

State of Hawaii Department of Land and Natural Resources

US Army Corps of Engineers, Honolulu District



AGENDA

HAWAII REGIONAL SEDIMENT MANAGEMENT (RSM)

WEST MAUI RSM WORKSHOP

Sanctuary Learning Center
726 South Kihei Rd, Kihei, HI 96753

August 27, 2014

1130 - 1145	Welcome and Introductions	Lemmo Shimabuku
1145 - 1200	RSM Program Overview	Lillycrop
1200 - 1330	West Maui RSM Investigations	Smith
	Shoreline Change	Smith
	Coastal Modeling	Podoski
	Region Sediment Budget	Podoski
	Potential RSM Projects	Smith
1330 - 1400	Break	
1400 - 1445	Perspectives	
	Federal Perspective	Shimabuku
	State Perspective	Lemmo
	Maui County Perspective	Buika
1445 - 1615	Breakouts	
	Breakout Sessions	All
	Breakout Sessions Report Outs	All
1615 - 1630	Wrap-up and Adjourn	Lemmo Shimabuku

HAWAII RSM WEB SITE: <http://gis.poh.usace.army.mil/rsm/index.htm>



US Army Corps
of Engineers®



REGIONAL SEDIMENT MANAGEMENT PROGRAM OVERVIEW

Linda Lillycrop

USACE

Engineer Research and Development Center



US Army Corps
of Engineers®

co-sponsored by:

State of Hawaii Department of Land and Natural Resources

US Army Corps of Engineers, Honolulu District



FY10 KIHEI RSM KAHULUI RSM

Tom Smith
Honolulu District

co-sponsored by:

State of Hawaii Department of Land and Natural Resources
US Army Corps of Engineers, Honolulu District



MAUI REGIONS



US Army Corps
of Engineers®

State of Hawaii Department of Land and Natural Resources

US Army Corps of Engineers, Honolulu District



KIHEI REGION



US Army Corps
of Engineers®

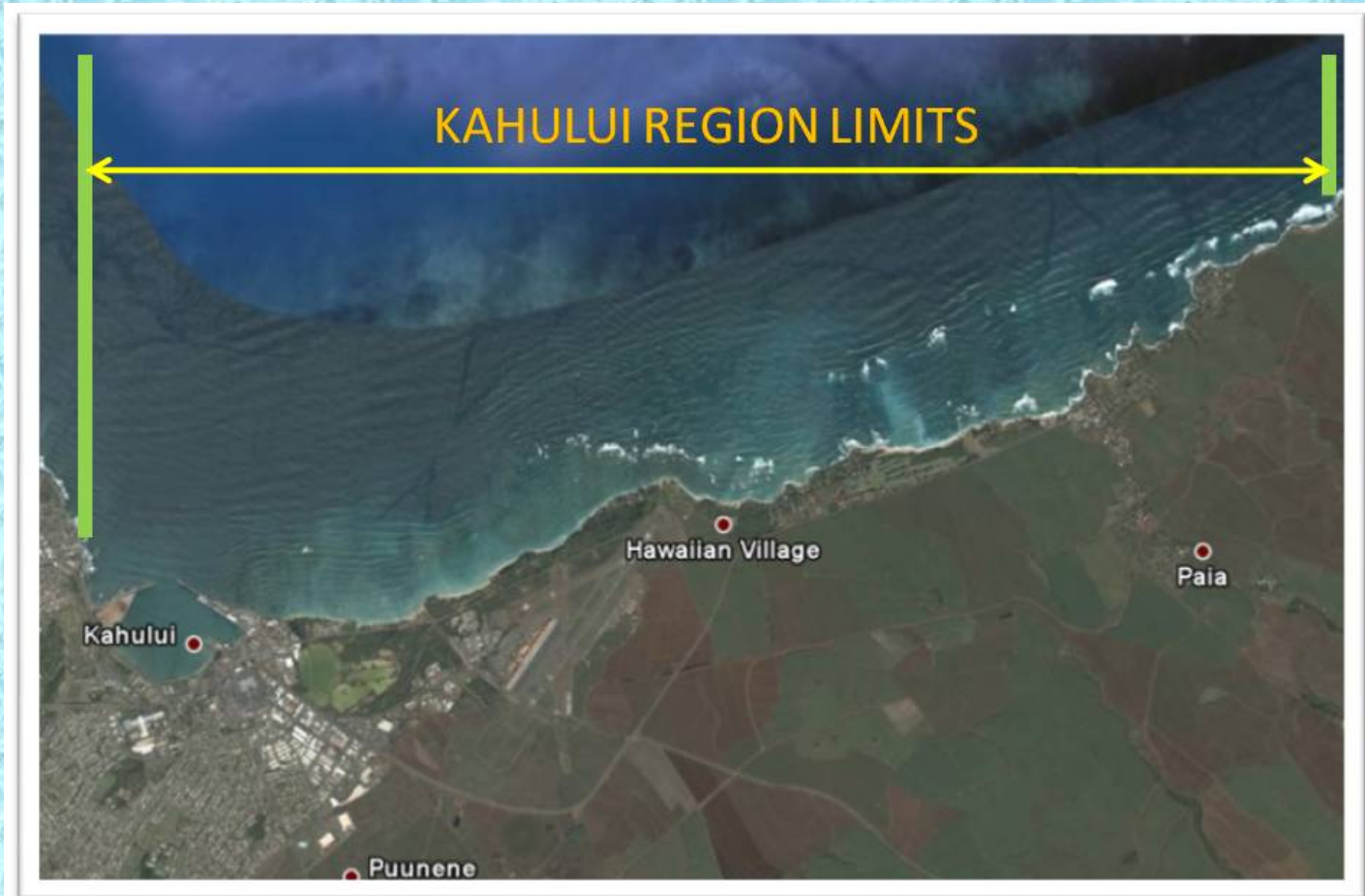
co-sponsored by:

State of Hawaii Department of Land and Natural Resources

US Army Corps of Engineers, Honolulu District



KAHULUI REGION



US Army Corps
of Engineers®

co-sponsored by:

State of Hawaii Department of Land and Natural Resources

US Army Corps of Engineers, Honolulu District



RMS PRODUCTS

- DEVELOPED PRELIMINARY REGIONAL SEDIMENT BUDGET
- CONDUCTED INITIAL OFFSHORE SAND SOURCE INVESTIGATIONS
- IDENTIFIED POTENTIAL RSM PROJECTS
- PREPARED PRELIMINARY RSM PLAN



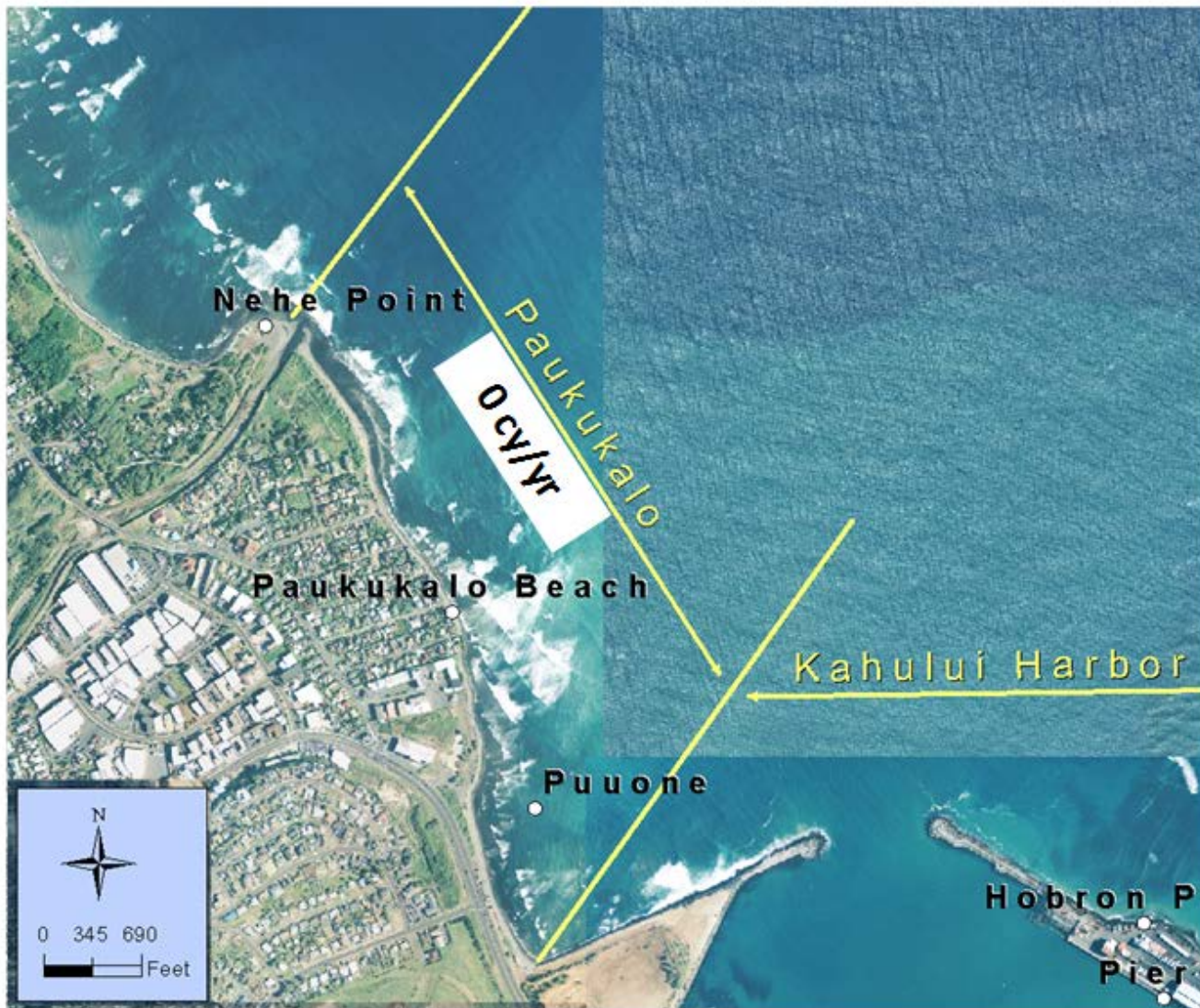
US Army Corps
of Engineers®

co-sponsored by:

State of Hawaii Department of Land and Natural Resources

US Army Corps of Engineers, Honolulu District





Beach Volume Change Rate for Paukukalo Littoral Cell



US Army Corps
of Engineers®

co-sponsored by:

State of Hawaii Department of Land and Natural Resources

US Army Corps of Engineers, Honolulu District





Beach Volume Change Rate for Kahului Harbor Littoral Cell



US Army Corps
of Engineers®

co-sponsored by:

State of Hawaii Department of Land and Natural Resources

US Army Corps of Engineers, Honolulu District





Beach Volume Change Rate for Kanaha Littoral Cell



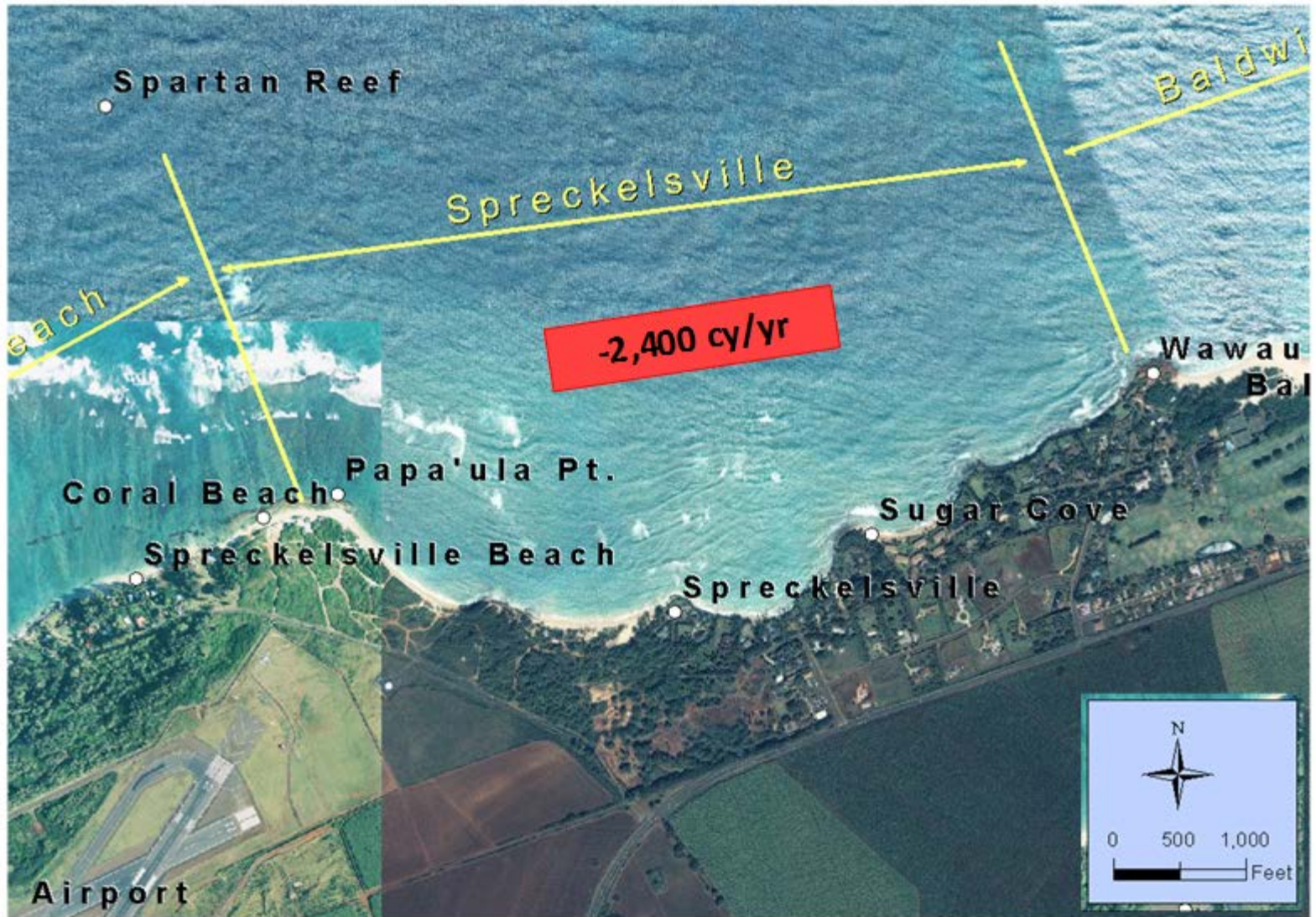
US Army Corps
of Engineers®

co-sponsored by:

State of Hawaii Department of Land and Natural Resources

US Army Corps of Engineers, Honolulu District





Beach Volume Change Rate for Spreckelsville Littoral Cell



US Army Corps
of Engineers®

co-sponsored by:

State of Hawaii Department of Land and Natural Resources

US Army Corps of Engineers, Honolulu District





Beach Volume Change Rate for Baldwin Park Littoral Cell



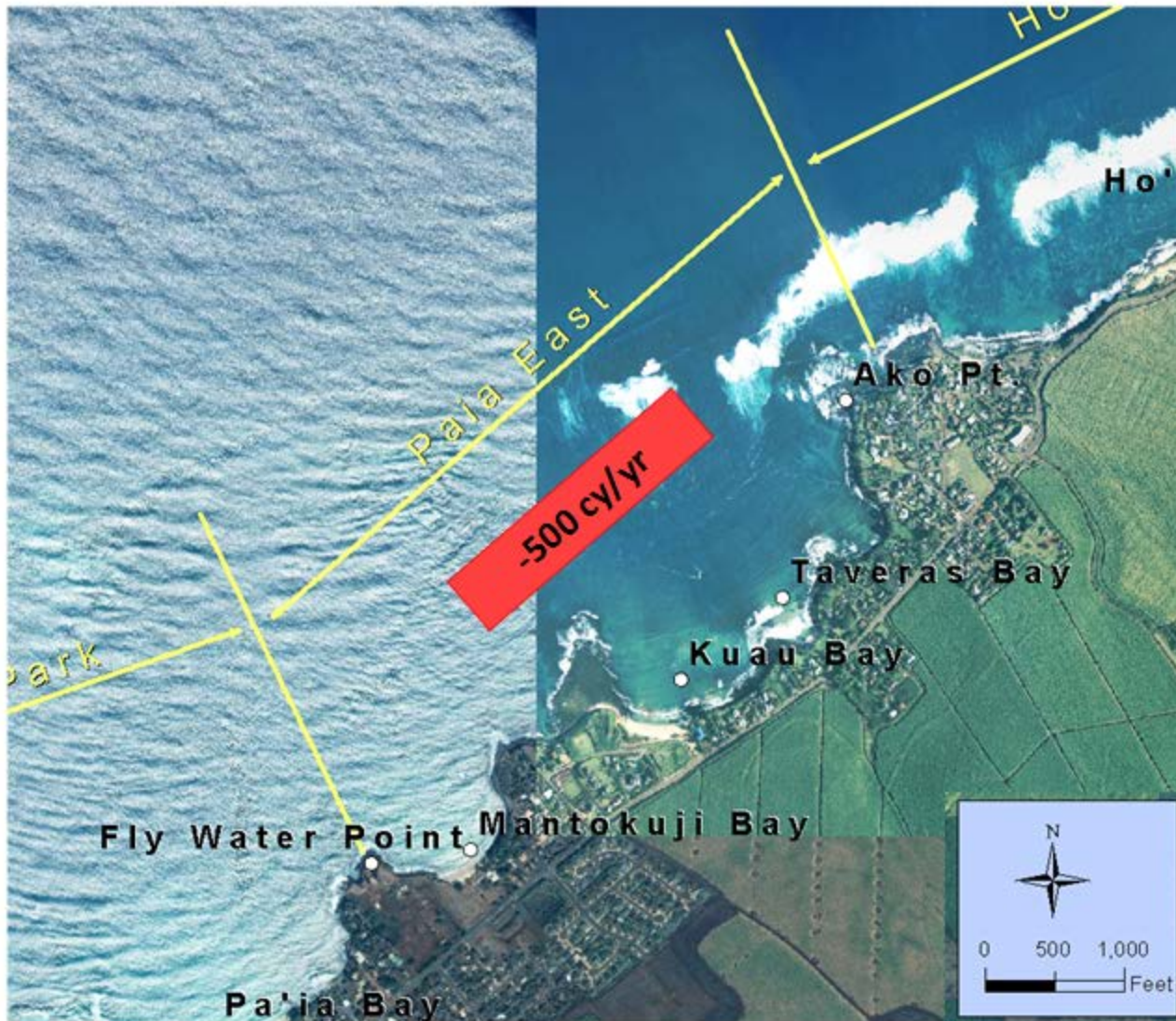
US Army Corps
of Engineers®

co-sponsored by:

State of Hawaii Department of Land and Natural Resources

US Army Corps of Engineers, Honolulu District





Beach Volume Change Rate for Paia East Littoral Cell

co-sponsored by:

State of Hawaii Department of Land and Natural Resources

US Army Corps of Engineers, Honolulu District



US Army Corps
of Engineers®





Beach Volume Change Rate for Hookipa Littoral Cell



US Army Corps
of Engineers®

co-sponsored by:

State of Hawaii Department of Land and Natural Resources

US Army Corps of Engineers, Honolulu District



FY13 HALEIWA RSM

Tom Smith
Honolulu District

co-sponsored by:

State of Hawaii Department of Land and Natural Resources
US Army Corps of Engineers, Honolulu District



HAWAII REGIONAL SEDIMENT MANAGEMENT
HALEIWA REGION

PUENA POINT BEACH

HALEIWA BEACH

HALEIWA SMALL BOAT HARBOR

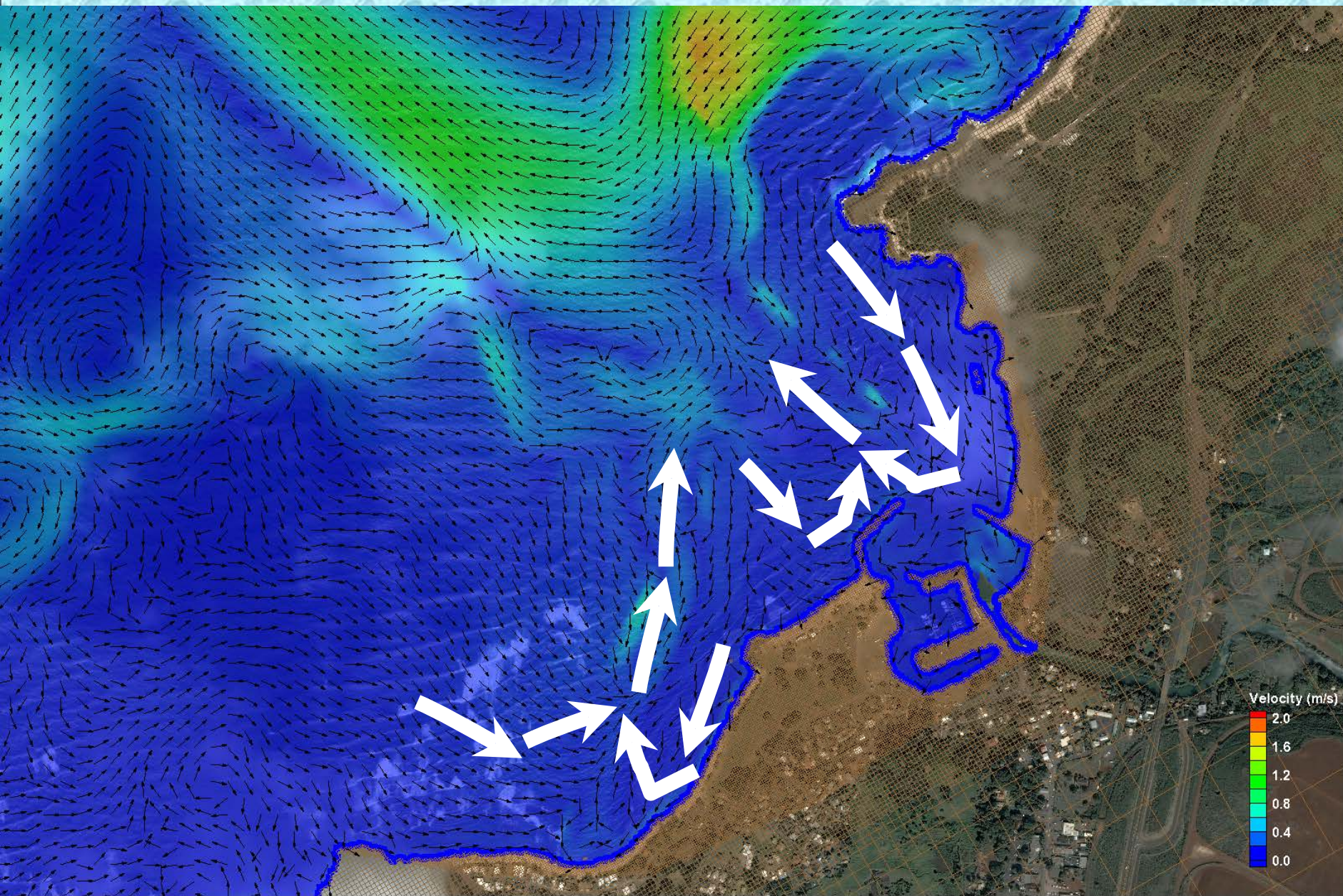
ALII BEACH

KAIKAKA BEACH



CMS Flow Currents from Steering Run (Waves \Leftrightarrow Circulation)

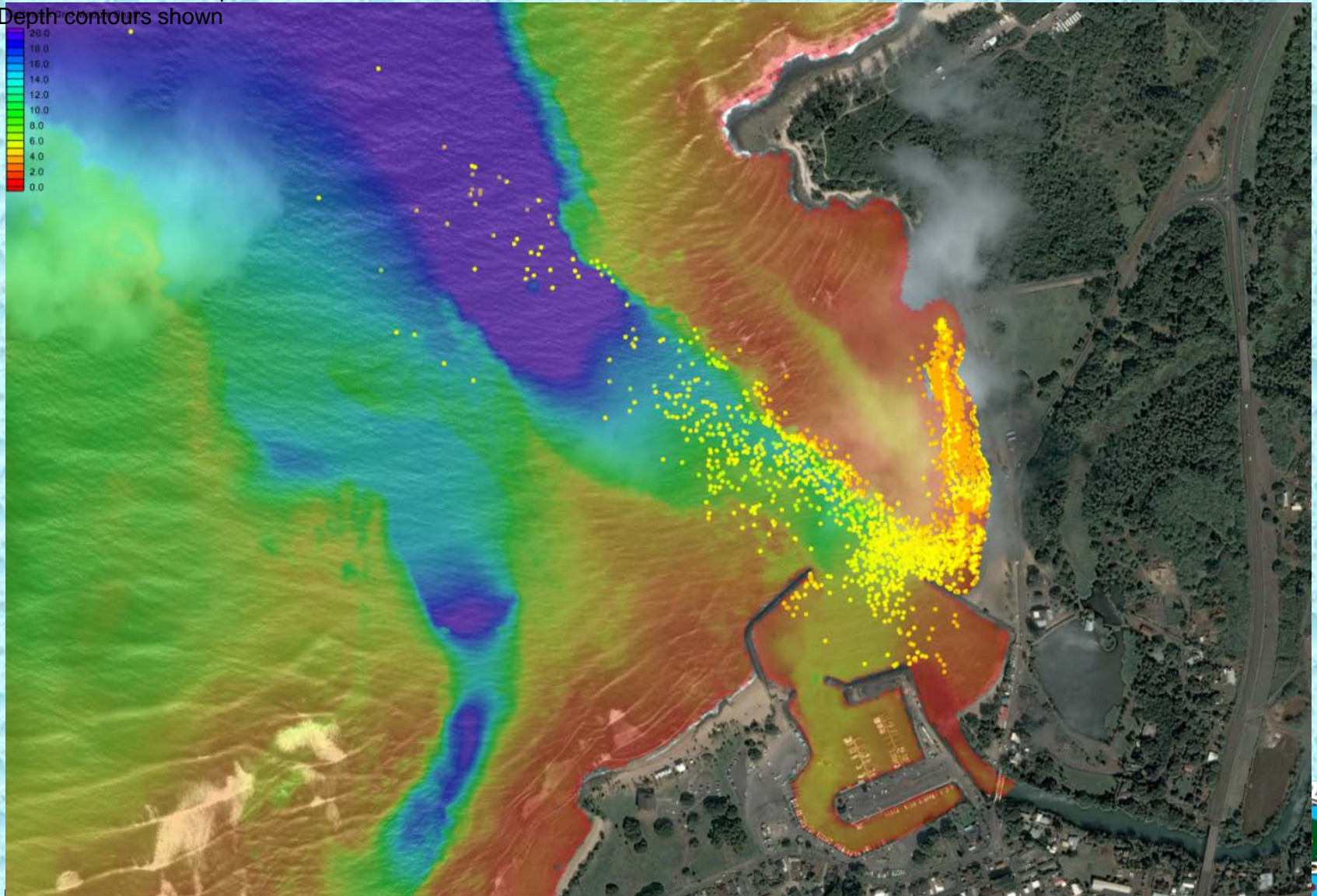
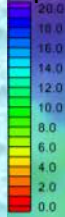
- Approximate 10-year event (January 1998)
 $H_o = 8.0\text{m}$, $T_p = 16\text{-}22\text{s}$, Dir = 320 deg (NW)



Particle Tracking Model Results for Simulated Beach Nourishment at Haleiwa Beach Park

- Results 48 hours after placement

- Depth contours shown



Pre- Project Sediment Pathways

1949 Aerial Photograph (Prior to Harbor Construction)



0 400 800 1,600 Feet

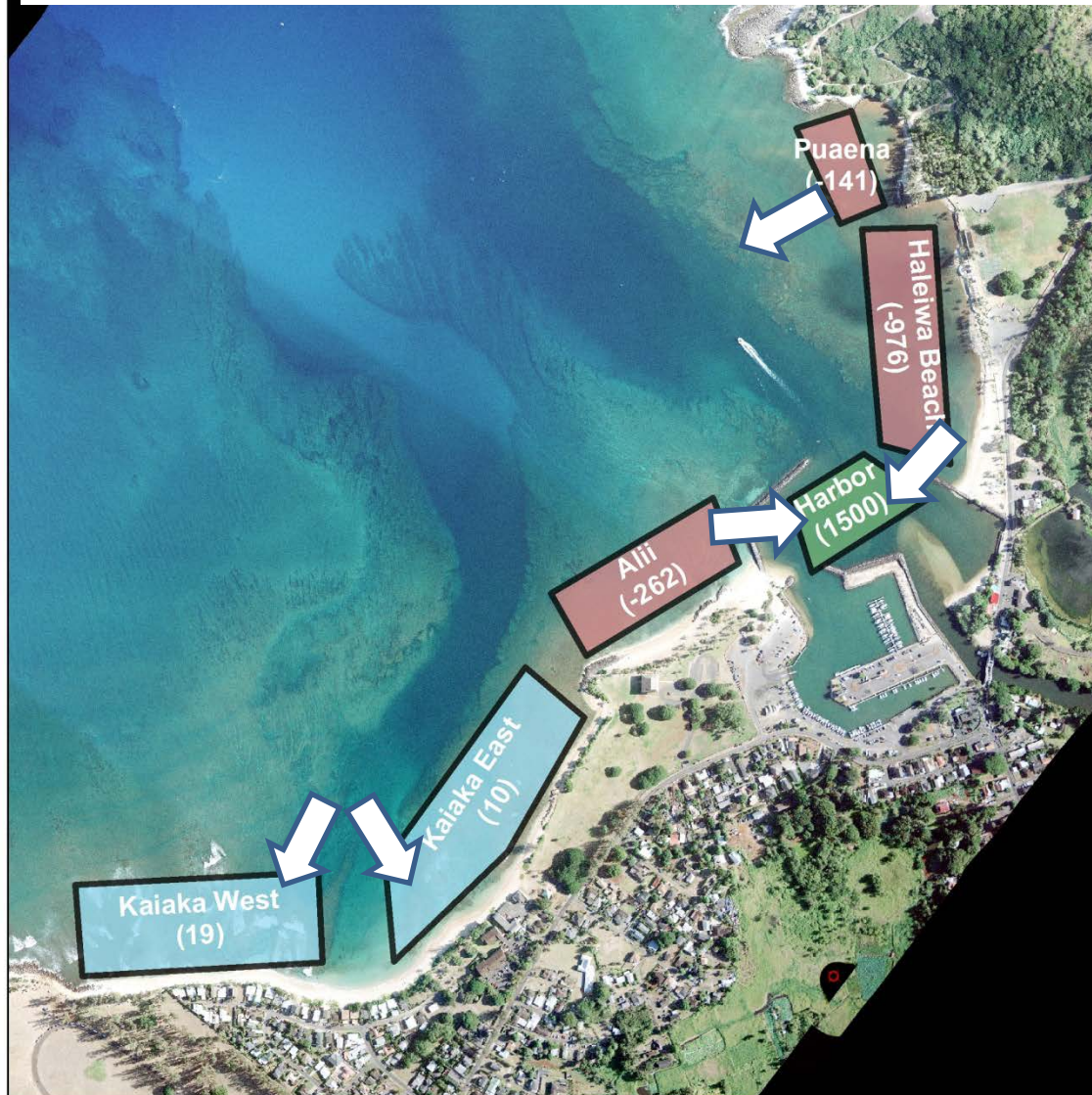


US Army Corps
of Engineers®



Post- Project Sediment Pathways

2006 Aerial Photograph (Following Harbor Construction)



US Army Corps
of Engineers®

0 400 800 1,600 Feet

21



FY14 WEST MAUI RSM INVESTIGATIONS

Tom Smith
Honolulu District

co-sponsored by:

State of Hawaii Department of Land and Natural Resources
US Army Corps of Engineers, Honolulu District

