



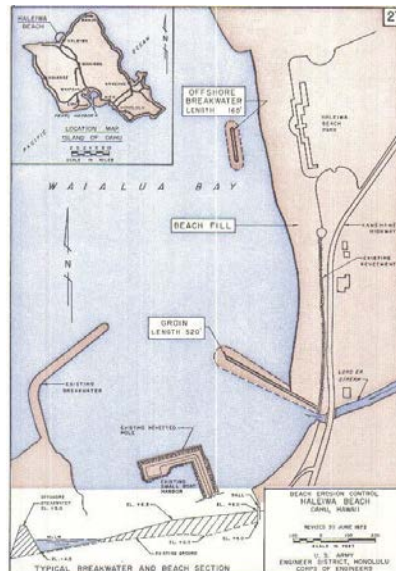
# Regional Sediment Management Program Honolulu District (POH):



## Haleiwa RSM

### Description

The Haleiwa Region consists of two federally authorized projects: the Haleiwa Small Boat Harbor and the Haleiwa Beach Restoration Project (HBRP). The HBRP consists of an offshore breakwater, beach fill, and a groin. The Honolulu District conducted an RSM project in this region in FY13 to identify sediment pathways through the development of a regional sediment budget. Results of the study showed that Ali`i Beach and Haleiwa Beach are losing sand, both to the offshore channel and to Haleiwa Harbor. Haleiwa Harbor, however, is accumulating sand and will need to be dredged within the next five to six years. To prepare for the next maintenance dredging event at Haleiwa Harbor, this RSM study will gather the information necessary to beneficially reuse suitable quality dredged sediment to renourish Haleiwa Beach or for some other purpose. This will require evaluating sediment quality, quantifying sediment volumes, identifying environmental requirements and permits, and working with the non-federal sponsor along with other stakeholders to identify stockpile and disposal options.



Map of the Haleiwa Beach Restoration Project

### Issues/Challenges To Address

The environmental processes and permitting required to place sand on a beach can take one or more years to acquire. Thus, to beneficially reuse the sediment dredged from Haleiwa Harbor, these actions need to begin well in advance of contract award. If the environmental requirements cannot be met in advance of the next dredging event, the opportunity to beneficially reuse the dredged material will be lost.

### Successes Lessons Learned

Lessons learned will be taken from the FY13 RSM effort and the previous dredging event, which included sediment transport modeling, a sediment budget, and potential RSM project recommendations.

### Expected Products

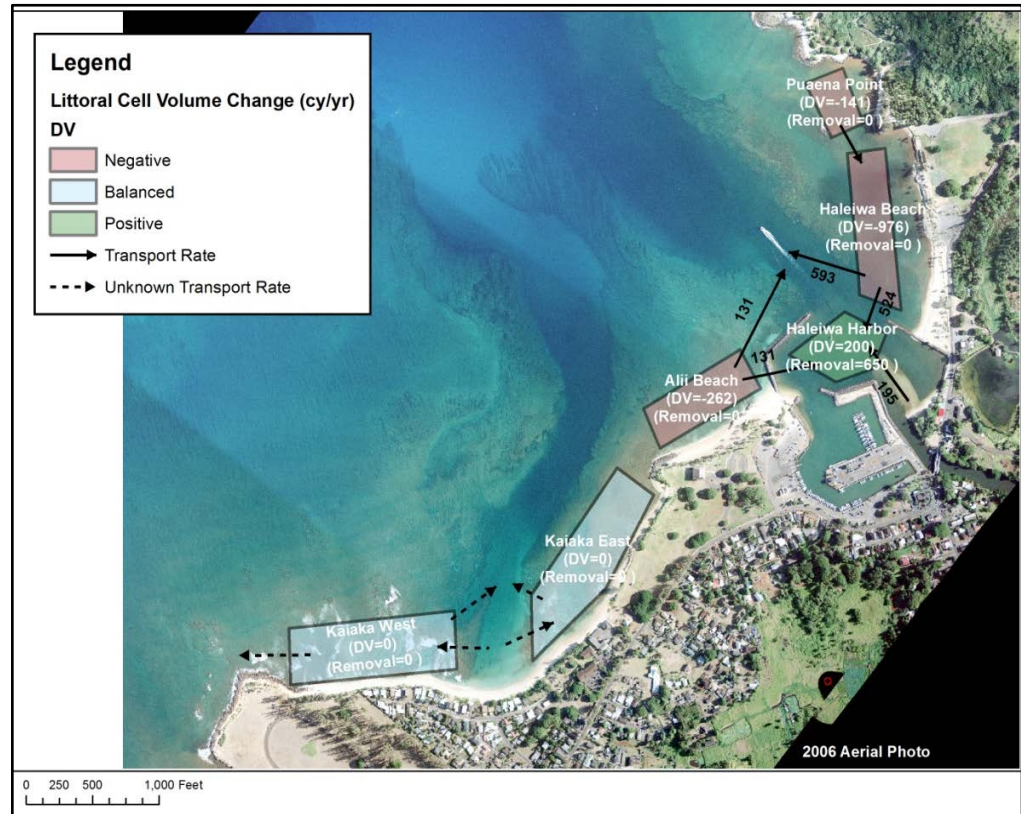
- Update of the shoaling rate at Haleiwa Harbor
- Identification of potential beneficial use locations
- Preparation of a permitting flow chart
- Coordination with non-federal sponsor and other stakeholders
- Preparation of a technical note documenting study findings
- Web site update on findings and lessons learned



# Regional Sediment Management Program Honolulu District (POH):



## Haleiwa RSM



Haleiwa Regional Sediment Budget developed in the FY13 RSM study.

### Stakeholders/Users

Stakeholders and users include the USACE Honolulu District, State of Hawaii Office of Conservation and Coastal Lands, the City and County of Honolulu Parks Department, and the State of Hawaii Department of Land and Natural Resources Division of Boating and Ocean Recreation

### Projected Benefits Value Added

By placing beach quality sand dredged from Haleiwa Harbor onto Haleiwa Beach, two federally authorized projects can be maintained in one undertaking. This will reduce costs, time, and environmental impacts while meeting our mission goals.

### Leveraging Opportunities

This RSM study will leverage the information previously obtained during the FY13 RSM effort, including modeling results, a sediment budget, and potential RSM projects. Additionally, UH instrument data from 2011-2014 and JABLTCX LiDAR data from 2013, which was unavailable during the previous study, will be used for this project.

### Points of Contact

Project Manager: Nani Shimabuku, lorayne.p.shimabuku@usace.army.mil, 808-835-4030  
Technical Lead: Jessica H. Podoski, jessica.h.podoski@usace.army.mil, 808-835-4146

### Participating Partners

Participating partners include the State of Hawaii Department of Land and Natural Resources' Division of Boating and Ocean Recreation (DOBOR) and Office of Conservation and Coastal Lands (OCCL).