

Regional Sediment Management for Sustainable, Resilient, Healthy Systems

Linda S. Lillycrop

RSM Program Manager

Katherine Brutsche

Deputy RSM Program Manager

Jackie Keiser

Director, RSM Regional Center

Jeff Lillycrop

ERDC Technical Director

Navigation & Civil Works

Jeff McKee

HQ, Proponent

Navigation BLM



US Army Corps of Engineers
BUILDING STRONG®





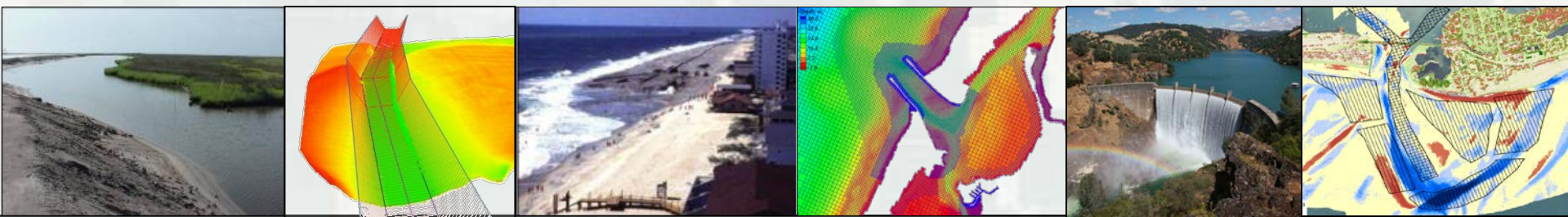
Regional Sediment Management...

Est 1999, CERB Charge



A systems approach to deliberately manage sediments in a manner that maximizes natural and economic efficiencies to contribute to sustainable water resource projects, environments, and communities = Healthy Systems

- O&M, FRM, Ecosystem, Emergency Mgmt:
 - Short and long-term sustainable, resilient solutions
 - Coastal and Inland
- Recognizes sediment as a valuable regional resource
- Work across multiple projects, authorities, business lines
- Tools and technologies for regional approaches
- Relationship building, decision making, implementation



RSM Strategies



Reduce Offshore/CDF
Placement



Nearshore/Beach
Placement



Bypass
Optimize Placement



Reservoir
Sediments



River Bank Erosion



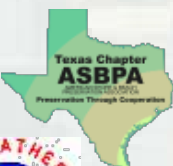
Ecosystem
Restoration

- **Keep sediment in the system**
- **Enhance natural sediment processes**
- **Reduce sedimentation**





RSM Participation (2000-2016)



- 28 Districts
- 20 Coastal
- 8 Inland
- 7 Coastal/Inland
- ERDC, IWR-



RSM Team

**USACE
Stakeholders and Partners**

**Share Successes
and
Lessons Learned**

**Identify Opportunities
and
Solutions**



**Take
Action**

**Decision
Making**

**Leveraging
Resources,
Data, Tools,
etc**

**Overcome
Obstacles**

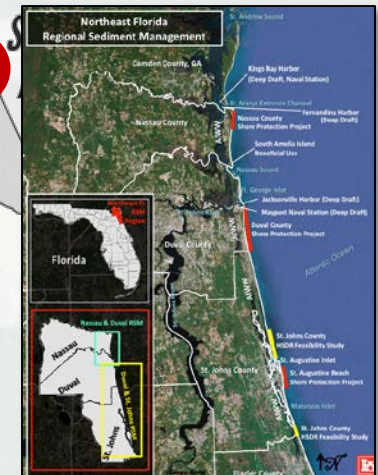


*RSM Successes

Philadelphia
Post Sandy Recovery



Jacksonville
Northeast Region



Omaha
2011 Missouri River
Flood Recovery



Great Lakes
& Ohio River
Division

North
Atlantic
Division

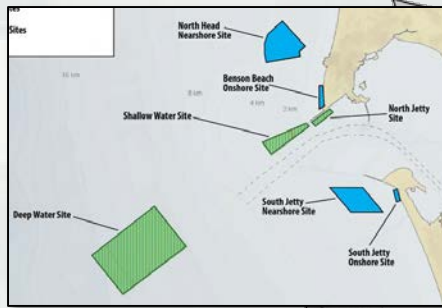
North
Pacific
Division

South Pacific
Division

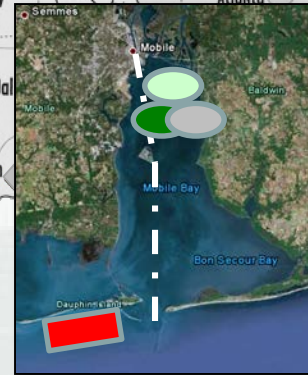
Southwestern
Division

Pacific
Ocean Division

Portland
Mouth of Columbia River
Nearshore/BU Placement Sites



Galveston
Galveston Island
Sand Management Plan



Mobile
Mobile Bay
In-Bay Placement



RSM.USACE.ARMY.MIL



The screenshot shows the homepage of the Regional Sediment Management (RSM) website. At the top, there is a header with the US Army Corps of Engineers logo, the RSM logo, and the text "REGIONAL SEDIMENT MANAGEMENT". Below this is a navigation bar with links: Home, Initiatives, Publications, Tools & Databases, Workshops & Meetings, Templates, Links, and In the News. The main content area is divided into several sections:

- Regional Sediment Management (RSM)**: A paragraph describing the systems approach to manage sediments, followed by a list of bullet points:
 - Recognizes sediment as a valuable resource for Healthy Systems
 - Regional implementation strategies across multiple projects and business lines to guide investments to achieve long-term economic, environmental, and social value and benefits
 - Enhances relationships with stakeholders and partners to better manage sediments across a region (local actions with regional benefits)
 - Share lessons learned, data, tools, and technology
- What's New?**: A section with a green background containing links to:
 - 2016 RSM IPR and Successes / Challenges Meeting, 17-19 May 2016
 - FY17 Request for Proposals
 - GenCode Version 1 Quick-Start Guide
 - 'Sustainable Ports' - A Guide for Port Authorities
 - USACE Navigation R&D Strategic Vision Document
 - RSM Successes
 - CHETNs
 - District Project Templates: Fact Sheets, Quarterly Reports
- In the News**: A section with a green background containing:
 - New Jersey Intracoastal Waterway Dredging with Innovative Placement team is awarded in the NAP Corps of Engineers Day External Engineering Team Award
 - Mobile District and Interagency Working Group RSM Teams honored by beach association
 - Palm Beach receives free sand from Port of Palm Beach dredging
 - ERDC - Potential RSM Projects: West Maui Region, Maui, Hawaii
 - RSM Calendar**
- Interactive Map**: A section with a map of the United States showing RSM activities at specific offices. The map is titled "HISTORICAL RSM PARTICIPATION (2000-2015)" and shows various divisions: Northwestern, South Pacific, Southwestern, Mississippi Valley, North Atlantic, Great Lakes & Ohio River, and South Atlantic. A legend indicates 27 Districts (20 Coastal, 7 Inland), ERDC, IWR-HEC, and RSM Video. Logos for EWN, USACE, and other partners are at the bottom.

RSM Technical Notes,
Reports, Manuals, Conference Papers



District
Stakeholder Workshops

*RSM University:
Tools, Technologies, Implementation

