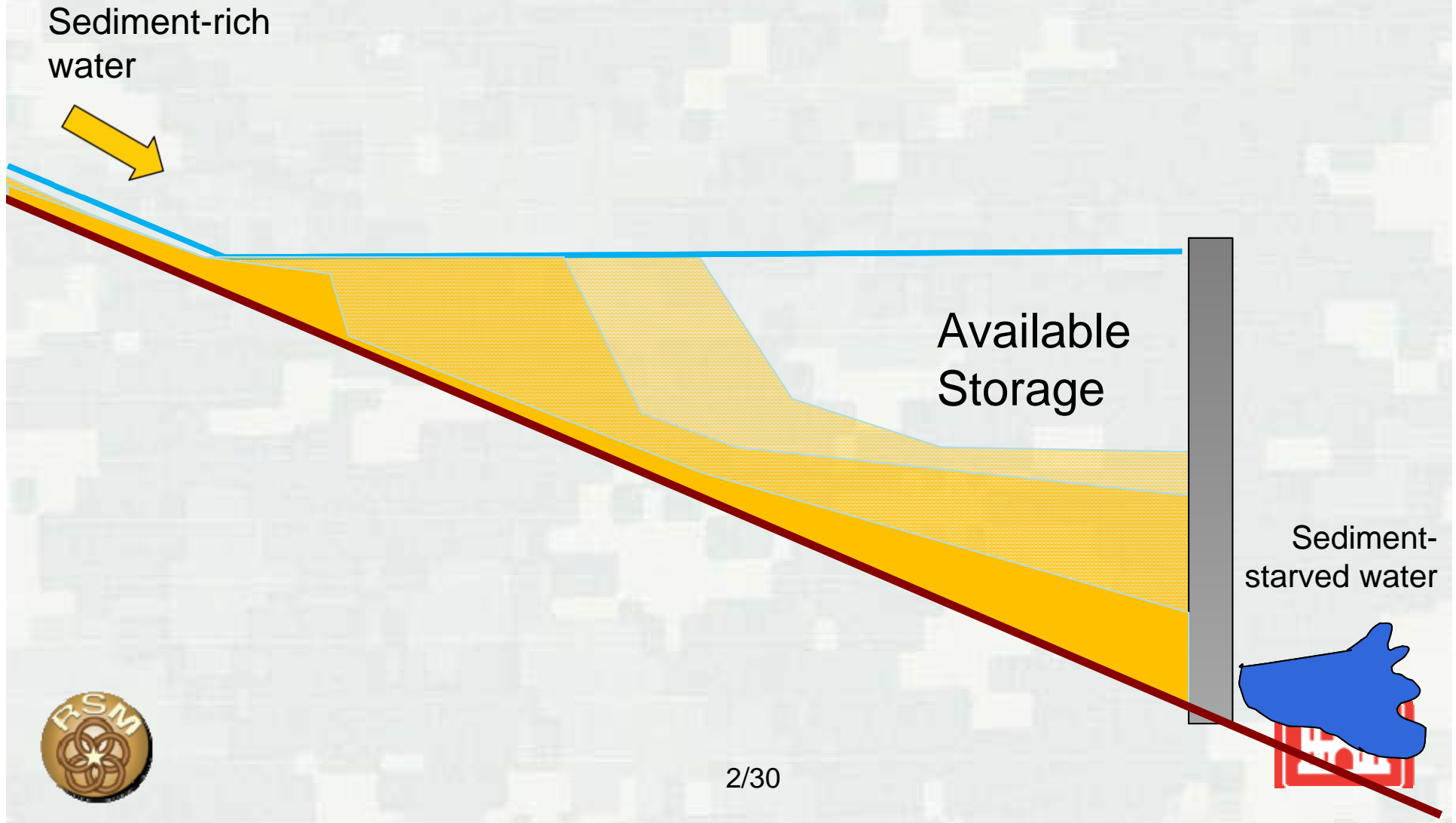


An aerial photograph of Milford Lake, showing a large dam on the left side. The lake water is a deep green color. In the background, there are green fields, trees, and a building. The text "Milford Lake Sediment Management Workshop" is overlaid in the center of the image.

Milford Lake Sediment Management Workshop

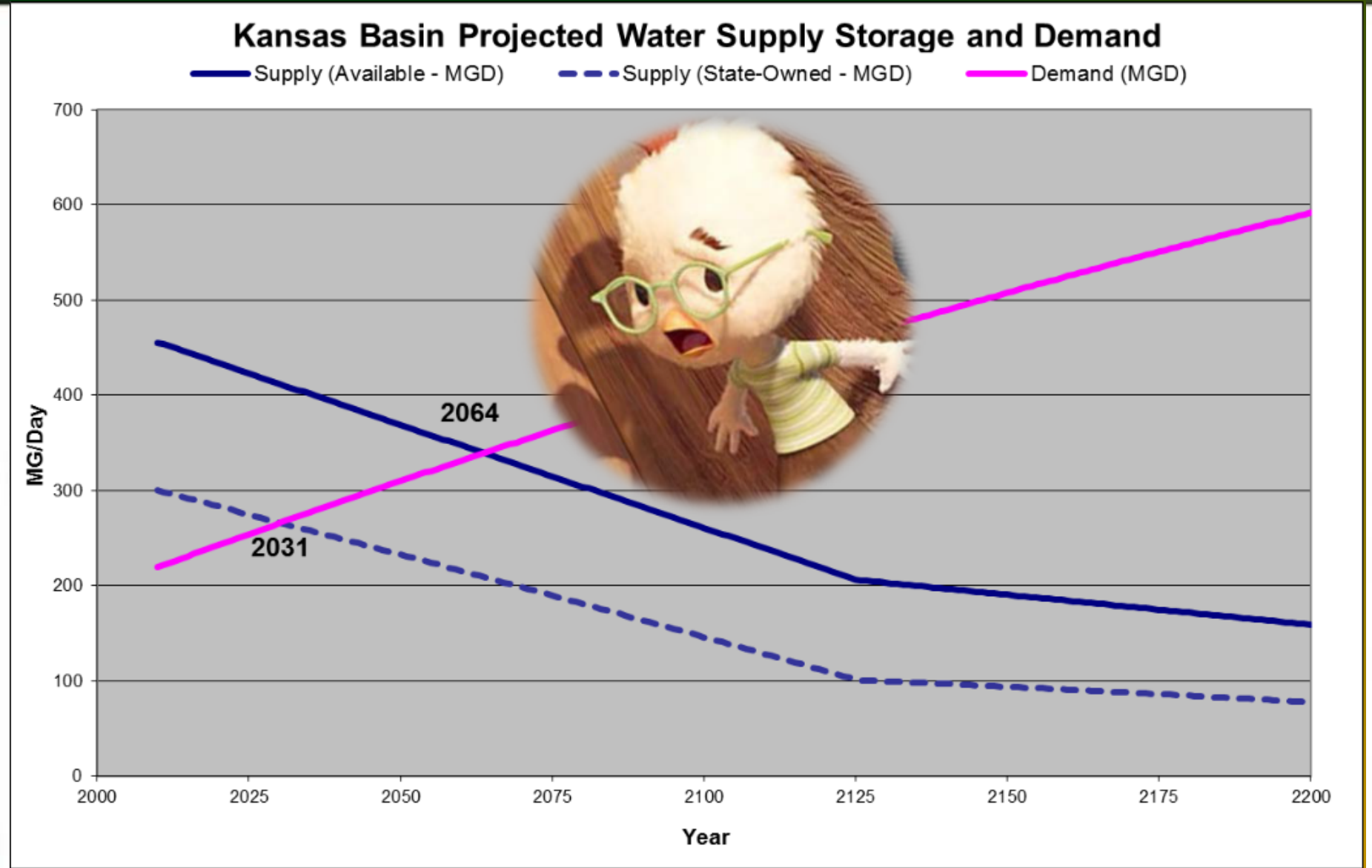
John Shelley, Ph.D., P.E.

Milford Lake Sediment Management Workshop

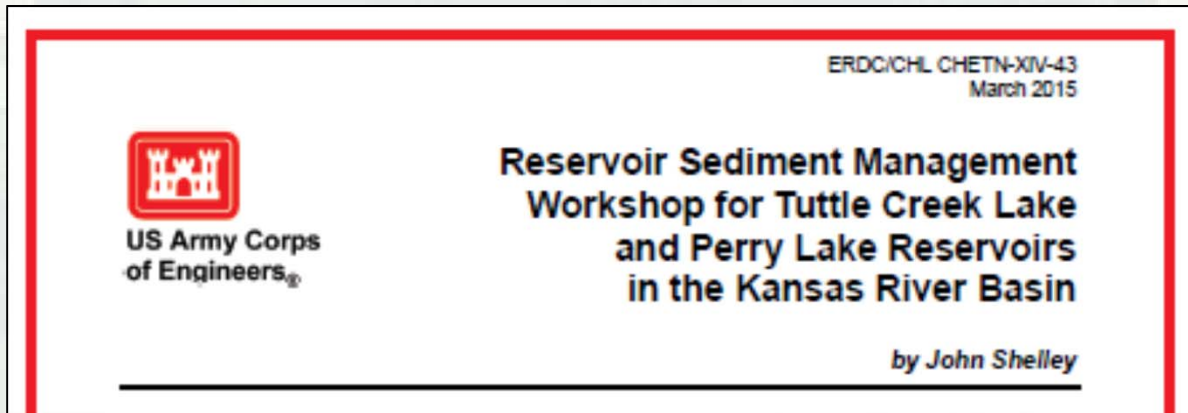


Supply – Demand Graphs

- 2% drought condition



August 2013 Workshop for Nearby Tuttle Creek Lake



2016 Kansas Water Plan: “conduct workshops with state and federal agencies and local stakeholders on data collection and research findings to discuss impacts, benefits and feasibility of implementing alternatives”



FY16 RSM IPR

NWK (Kansas City), Milford Lake Reservoir Sediment Management Workshop , John Shelley

BLUF: 1.5 Day Workshop educating on reservoir sediment management issues and options, and specific brainstorming for Milford Lake

Challenge

- Knowledge gap
- Skills gap
- Permitting gap
- Valuation gap
- Funding gap

AND YET

- It has to be done sooner or later
- And the longer we wait, the worse position we're in

Objectives

- 1- Motivate
- 2- Educate
- 3- Solve a specific problem



Milford Lake

Reservoir Sediment Management Workshop

July 20—21, 2016

Manhattan, Kansas

Come participate in a two-day workshop/brainstorming session sponsored by the State of Kansas and the U.S. Army Corps of Engineers, Regional Sediment Management Program and Kansas City District.

FY16 RSM IPR

Approach (including Tools/Models/Data Used)

1. BIG PICTURE
2. TECHNICAL (light)
3. MILFORD-SPECIFIC

Presentations Will Include

- Making the problem real
- Management options
- Screening tools
- Reservoir economics
- Algae and sedimentation
- Hands-on “bucket and sand” examples



Deliverables

Data Book	6/30/16
Workshop	7/20-21/16
Trade Journal Article Submitted	9/30/16
White Paper Submitted	9/30/16



FY16 RSM IPR

NWK (Kansas City), Milford Lake Reservoir Sediment Management Workshop , John Shelley

What is working? Ups? Success?

State agency (Kansas Department of Agriculture) providing the venue

NWK participation (lake managers and other ops, regulatory, planning)

USGS expert on toxic algae blooms

State agencies, EPA, USGS, COE

Student labor

DA intern labor



What is not working? Downs? Issues?

State of Kansas is cash strapped right now.



FY16 RSM IPR

NWK (Kansas City), Milford Lake Reservoir Sediment Management Workshop , John Shelley

District/Other USACE PDT Members

John Shelley, NWK

Paul Boyd, NWO

Drew Minert, NWK

Joel Monnig, University of Central Missouri

Stakeholders and Partners

Erika Stanley, Kansas Water Office

Susan Metzger, Kansas Department of Agriculture

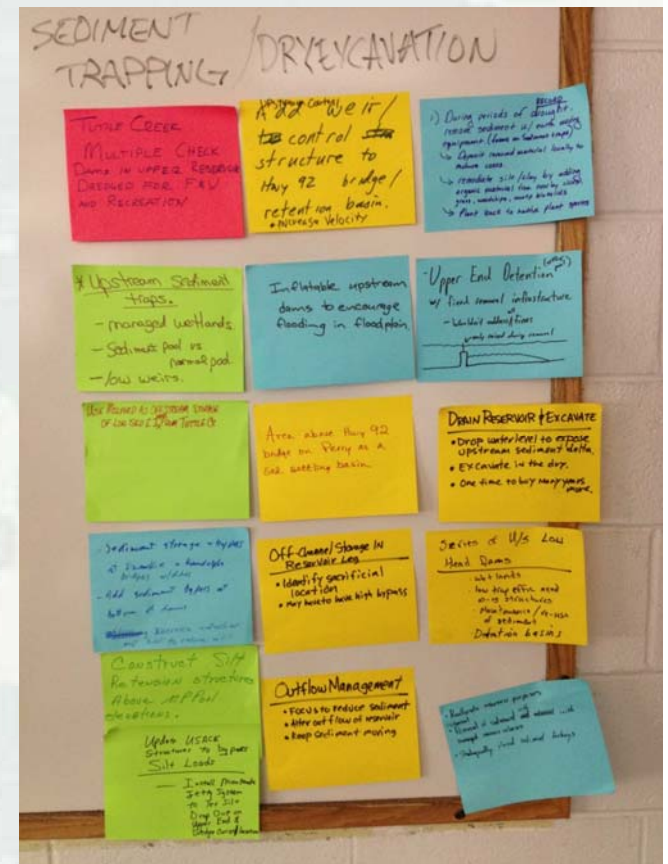
Jennifer Graham, USGS Algae expert

Leveraging/Collaborative Opportunities

Sustainability

“RSM University” –Modular training

Kansas River Watershed Study ???



FY16 RSM IPR

NWK (Kansas City), Milford Lake Reservoir Sediment Management Workshop , John Shelley

Value to the Nation (Brainstorming – be creative to identify a value in some way)

Building training materials

Building internal (USACE) awareness

Building coalitions

Springboard into an sustainability plan

Springboard into a watershed study

Do more than just talk about it



Conclusion

Milford Lake

Reservoir Sediment Management Workshop

July 20—21, 2016

Manhattan, Kansas

Please RSVP John Shelley at
john.shelley@usace.army.mil

