



# National RSM Program Bi-Monthly call 19 October 2017

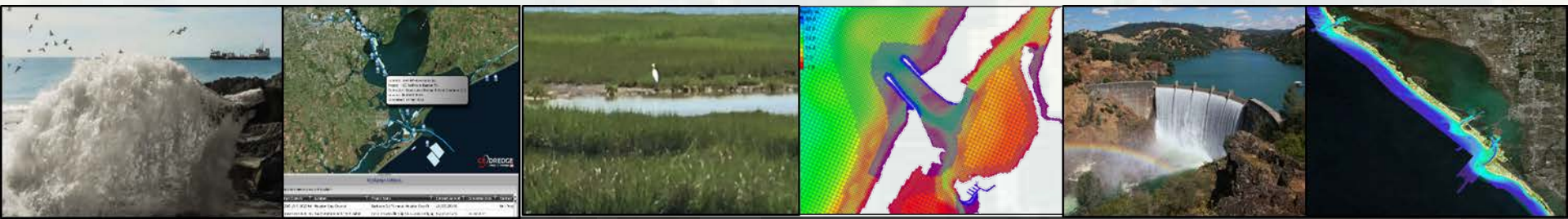
1:30-1:55 FY18 Proposal Selections, Schedule, Activities, etc

Linda Lillycrop

1:55-2:15 Post-Hurricane Coastal Mapping and Change Analysis  
(National Coastal Mapping Program)

NCMP

2:15-2:30 Discussion, Q&A, Wrap-up





# FY18 RSM Program Schedule



## RSM Bi-Monthly Calls

19 October 2017

21 December 2017

15 February 2018

19 April 2018

21 June 2018

16 August 2018

## FY18 In-Progress-Review

15-17 May 2018

Mobile, AL, Hosted by SAM

**FY19 RSM Program Proposal Submittals – 22 June 2018**



## RSM University

Jan?, Sediment Budget/SBAS training, LRD  
Feb?, Reservoir Sediment Management for Engineers  
TBD, Coastal and Fluvial Sand Tracer Workshop



## FY18 Meetings & Conference Participation

- 19-21 Sep, PIANC SMART Rivers Conference, Pittsburg (RSM Session)
- 25-27 Oct, ASBPA Conference, Fort Lauderdale (RSM Session)
- 1-2 Nov, Great Lakes Sedimentation Workshop, Chicago
- 13-17 Nov, Coastal Working Group Meeting, Portland, OR
- 30 Nov, James River Partnership Meeting, Norfolk
- 7 Dec, BOEM Gulf of Mexico Sand Resources Mtg, New Orleans
- 7-9 Feb, FSBPA Conference, Panama City, FL (RSM Session)
- Feb?, River Engineering Working Group Meeting, New Orleans
- 20-22 Mar, ASBPA Summit, DC
- 3-5 Apr, Environmental, FRM, Navigation RARG, Vicksburg
- 16-20 Apr, BoR International Reservoir Sedimentation & Sustainability Workshop, Denver (BoR/USACE instructors)
- 19-21 Jun, CMTS Bi-Annual R&D Conference, DC (RSM Session)

\*\*Please send information on your meetings!



## **Technical Notes**

- RSM-17-3 Reservoir Sediment Management Workshop for Milford Lake in the Kansas River Basin, NWK
- RSM-17-2 Pinellas, Manatee, and Sarasota Counties, Florida; Regional Sediment Budget
- RSM-17-1 Identification of Alternatives to Reduce Shoaling in the Lower Matagorda Ship Channel, Texas
- CHETN-XIV-56 Gaillard Island Bio-degradable Geotube Test Project, Mobile Bay, Alabama
- CHETN-XIV-55 Generation of a Sediment Rating and Load Curve Demonstrated at the Mackinaw River Confluence
- CHETN-XIV-54 Beach and Morphology Change Using LIDAR

## **In-Publication/Review**

- Physical Monitoring Methods for Nearshore Placement of Dredged Sediments, ERDC
- Sediment Sorting By Hopper Dredging and Pump-out Report 1: Conceptual Model and Literature Review, ERDC/SAJ
- Understanding Regional Shoreline Change and Coastal Processes at the Sunset Beach Region, Oahu, Hawaii, POH
- Regional Sediment Dynamics in Mobile Bay, AL: A Sediment Budget Perspective
- User's Guide for the Sediment Mobility Tool Web Application, CHL
- Implementing Regional Sediment Management: Pertinent Policy Guidance and Authorities, RSM-RCX
- The Cross Section Viewer: A Tool for Automating Geomorphic Analysis Using Riverine Cross Section Data
- ID of Alternatives to Manage Sediment at the Intersection of the GIWW and the Corpus Christi Ship Channel
- Potential RSM Projects; Utulei Beach Region, American Samoa
- American Samoa RSM; Numerical Modeling of Waves and Currents in the Utulei Beach Region
- Hawaii Regional Sediment Management: West Maui Region; Nearshore Sedimentation at Honokowai Stream
- Reservoir SEDiment MANagement (SEDMAN) Technologies Interactive Web Interface: An Overview
- Evaluation of Turbidity Compliance Challenges in the State of Florida Associated with the Beneficial Use of Dredged Material from Federal Navigation Channels
- True Cost of Dredged Material Management: Jacksonville Harbor Case Study
- South Atlantic Division RSM Optimization Pilot
- Analysis for a Hydrosuction Sediment Removal System at Tuttle Creek Lake, Kansas, NWK
- Reservoir Sediment Management Workshop for Regulators, Planners, and Managers, NWK, NWO, CHL
- Evaluating Post-Wildfire Impacts to USACE Flood Risk Management: Las Conchas Wildfire, CHL, SPA
- Analysis of a Hydrosuction Sediment Removal System for Tuttle Creek Lake, KS, NWK



## **Technical Reports**

- ERDC-CHL TR-17-17 Charleston Harbor, SC, Regional Sediment Management Study; Beneficial Use of Dredged Material Through Nearshore Placement, SAC
- Nearshore Placement Techniques in S Lake Michigan, LRC-ERDC
- Sediment Budget Analysis; Masonboro Inlet, North Carolina, SAW
- Addressing Nearshore Placement Near Lake Worth Inlet, FL, SAJ
- Implementation Strategies and Recommendations for Ecosystem Restoration in Tampa Bay, Florida, SAJ

## **Journal Articles**

- World Dredging: May 2017, Innovative Near-shore Berm Placement Techniques at Vilano Beach, FL and Application of the Sediment Mobility Tool, B. McFall, K. Brutsché, J. Ousley, C. Maglio, J. Engle
- Shore & Beach: Summer 2017, Strategic Nearshore Placement of Dredged Sediment at Vilano Beach, FL, K. Brutsché, B. McFall, H. Li, J. McNinch, J. Ousley, J. Engle, and C. Maglio
- Coastal Engineering: November 2017, Laboratory Experiments on Beach Change Due to Nearshore Mound Placement, E. Smith, M. Mohr, S. Chader
- Marine Science and Engineering: April 2017, Sediment Transport into the Swinomish Navigation Channel, Puget Sound—Habitat Restoration versus Navigation Maintenance Needs, T. Khangaonkar, A. Nugraha, S. Hinton, D. Michalsen, S. Brown





# FY18 Proposals

51 Proposals  
29 Selected (tentative)



# FY18 Program

- LRD Continued Outreach Great Lakes Tributary Model Program
- LRB Lake Erie Sediment Budget application and SBAS
- LRB Lake Ontario Sediment Budget – Refinement
- LRC Eval UAS Technologies to Monitor NS Placement S Lake MI
- LRE Sediment Source to Sink Lag Time
- MVD Analytic Methods to Reduce Uncertainties ISSDOTv2
- MVS/MVM Guidance Towards Optimal Collection of Chirp Geophysical Data for RSM Goals
- MVN Investigate Sediment Sources Within System Associated with Deposition in the Calcasieu Ship Channel
- MVP Evaluation of real-time bedload transport measurement techniques during high flows: Chippewa Bedload
- MVR Impact of Reservoir Sedimentation on Project Benefits & Opportunities for Commercial Use of Dredged Material
- MVS Sedimentation Impacts within the St. Louis Harbor Reach of Middle MS River
- NAO James River Federal Navigation Channel, Lower Reaches, RSM
- NAP Understanding Sediment Transport & Improve RSM Strategies for USACE Projects along the DE & MD Coasts
- NWK RSM Effects of Bank Stabilization: Kansas River Basin
- NWO Benefits/Impacts Reservoir Flushing RSM Context Cherry Creek Pressure Flush II
- NWP West Sand Island Shore Stabilization OR & WA Coast
- NWP Site Selection Framework: Placement of Dredged Material for Estuary Habitat Restoration: MCR
- NWP North Head Argus Station Engineering Products for RSM
- POH Sources & Transport Pathways of Sediment Infilling Kahului Harbor
- POH Kahului Harbor Beneficial Use Opportunities
- RSM-RCX/ERDC Sediment Sorting During Dredging & Placement
- SAC SAC RSM Working Group
- SAC RSM Strategies
- SAM ID Potential BU Opportunities for Wetland Sites Mobile Bay
- SPN Monitoring of Sand Placement near Pillar Point Harbor, Half Moon Bay, CA - Monterey Bay National Marine Sanctuary
- SWG Utilization/Design Considerations Channel to Victoria BU
- ERDC Regional Sediment Budget Workflows, Tools, Web Map
- ERDC Annual Sediment Yield Ohio River Basin 1980-2017
- ERDC Enhance Sediment Transport Model Technologies/Libraries
- Historical RSM/BU Navigation Sediments – Inland Systems
- Nearshore Processes Collaborative Research
- RSM-RCX NAD RSM Economic Value and Dredge Fleet Scheduling Optimization
- RSM Website Update





4<sup>th</sup> Qtr Progress Reports – Past Due 30 Sept 2017  
FY17 Deliverables

