

# FY18 RSM IPR Honolulu District Hawaii Regional Sediment Management (RSM) Kahului Harbor RSM



**POC(s):** Lauren Molina, Thomas Smith, Michael Wyatt

**BLUF:** Evaluate the potential to beneficially use sediment dredged from Kahului Harbor.

## Challenge/Objectives

- Keep sediment in the system rather than offshore or upland disposal
- Overcome cost, permitting, and coordination challenges
- Identify non-federal stakeholder to partner with us for a beneficial use project

## Approach

- Evaluate sediment – quality & quantity
- Identify and evaluate beneficial use options (location, cost, permitting requirements)
- Engage stakeholders



# FY18 RSM IPR

## Honolulu District, Kahului Harbor RSM



### District/Other USACE PDT Members

- Jessica Podoski, POH Coastal Engineer
- Nani Shimabuku, POH Project Manager
- David Lau and Helen Stupplebeen, POD RSM POC

### Stakeholders/Partners

- Hawaii DLNR Office of Conservation and Coastal Lands: Sam Lemmo
- Maui County Planning Dept.: Tara Owens
- Hawaii DOT Harbors: Duane Kim
- Sugar Cove, Stable Road, and other Spreckelsville Homeowner Associations: Patricia Cadiz



### Leveraging/Collaborative Opportunities

- Surveying and sediment sampling from FY16 maintenance dredging
- Sediment sampling from Kahului Harbor Infilling RSM project to further evaluate sediment

Picture of Stable Road project



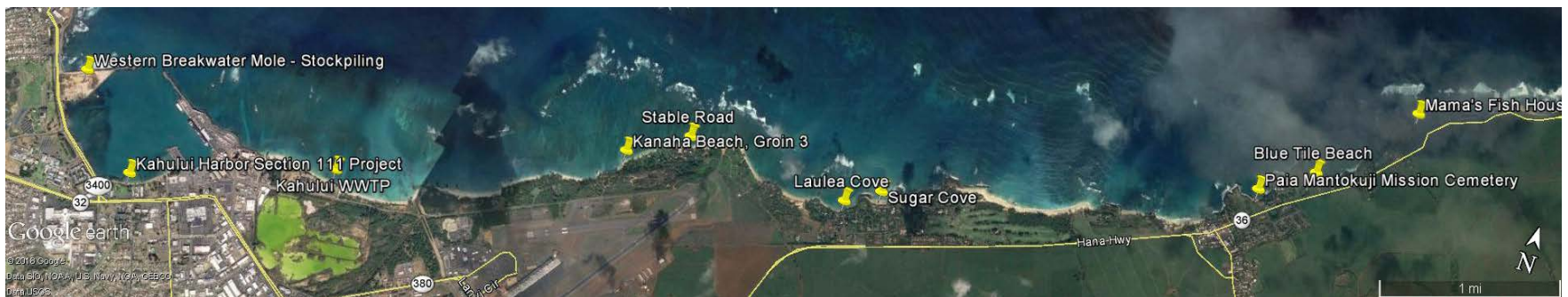
# FY18 RSM IPR

## Honolulu District, Kahului Harbor RSM



### Accomplishments/Deliverables/Lessons Learned

- Early Coordination with sponsors and stakeholders
  - Maui County Planning Dept.: Identified several potential locations for sand placement
  - DOT Harbors: Consented to material stockpiling on western breakwater mole given County or other stakeholders' commitment to remove it
  - Sugar Cove and other Associations: Interested in material for their current and future beach fill projects, looking for sources due to moratorium on inland sand mining
- Site visits to evaluate different beneficial use options



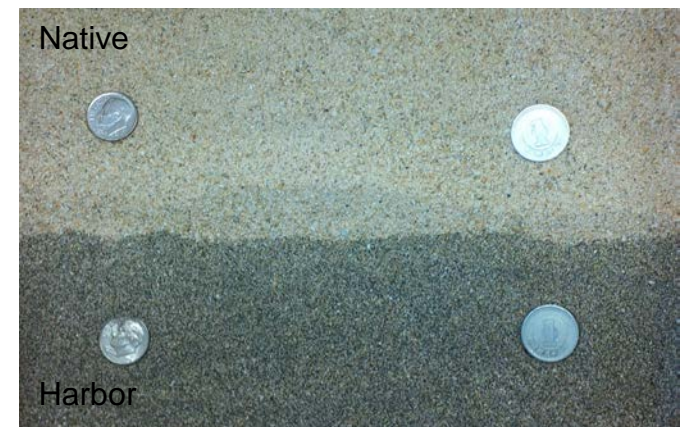
# FY18 RSM IPR

## Honolulu District, Kahului Harbor RSM



### What is your path forward to construction?

- Assess potential for dredged sand to replace inland sand source
  - Beach Fill:
    - ▶ Sand is darker in color and finer than native sand
    - ▶ Dredging in harbor would be easier than offshore (calmer waters, more dredging options)
    - ▶ Are non-federal stakeholders willing to cost-share?
  - Construction:
    - ▶ Company is barging in sand for construction due to moratorium on inland sand mining
    - ▶ Is dredging sand a cost effective option for them?
- Get commitment from non-federal stakeholder





## FY18 RSM IPR Honolulu District, Kahului Harbor RSM

**How is this project benefiting the USACE and Nation?  
(efficiency, monetary, technical, relationship building, outreach, etc.)  
(Volume of sediment to be managed, Acres created, etc)**

- Benefits gained if material removed for beneficial use by non-federal partners such as Maui County, State of Hawaii, or private stakeholders
- Lower the quantity of material taken to the ODMDS during the next harbor dredging cycle
- Potential to lower USACE maintenance costs
- Beneficial use on a nearby beach would provide environmental, recreational, and economic benefits to Maui County, the State of Hawaii and the nation.

